

LAMPIRAN

Tabel Data Kecemasan Tidak Punya Pacar (Y)

N	Fakultas	Item																						Total	Total Valid
		1	2	3	4	5	6	7	8	9	10	11	12	13	14	15	16	17	18	19	20	21	22		
1	Psikologi	2	3	2	2	3	1	2	2	2	2	3	3	3	2	2	3	2	3	3	2	2	2	51	49
2	Teknik Pangan	2	2	2	1	1	1	1	2	1	3	1	2	2	1	2	2	2	2	2	2	2	2	38	36
3	Teknik Pangan	2	2	2	2	3	2	2	2	2	2	2	2	2	3	3	2	2	3	2	2	3	49	46	
4	Psikologi	3	1	2	3	1	2	1	1	1	4	3	2	1	2	1	1	1	1	1	2	2	38	36	
5	Ekonomi	2	1	2	2	1	2	2	2	1	3	1	2	1	1	1	3	1	2	1	3	1	37	35	
6	Psikologi	1	3	3	2	2	2	1	2	2	2	2	3	3	2	2	1	2	2	2	2	2	45	43	
7	Teknik Pangan	2	2	2	2	2	1	1	2	2	3	2	2	2	2	2	2	2	2	2	2	2	43	41	
8	Teknik Pangan	1	2	2	1	1	2	2	1	2	2	2	2	2	2	1	2	1	2	2	2	2	38	36	
9	Psikologi	1	3	2	1	1	1	1	1	1	3	2	2	2	2	2	2	2	2	2	2	2	40	37	
10	Psikologi	2	3	2	2	2	2	2	2	1	3	2	2	3	2	1	2	2	2	1	2	2	44	42	
11	Teknik Pangan	2	2	2	2	1	1	2	1	1	2	3	1	1	2	3	3	2	2	1	1	2	39	37	
12	Teknik Pangan	3	2	2	3	2	1	2	2	2	3	3	3	3	2	2	3	3	2	2	2	1	52	48	
13	Ekonomi	3	1	3	2	3	1	2	1	1	1	2	2	2	2	2	1	3	2	2	2	3	43	41	
14	Farmasi	1	1	1	2	2	2	2	1	2	3	2	2	2	2	3	2	2	2	2	2	2	43	40	
15	Sekretaris	2	3	3	2	2	2	2	2	3	3	1	3	2	2	3	3	3	2	3	2	2	52	50	
16	Psikologi	3	2	3	3	2	1	2	3	2	3	3	2	1	1	2	3	2	2	1	2	2	47	45	
17	Psikologi	2	2	2	2	2	2	2	2	2	2	2	2	2	2	2	2	2	2	2	2	2	44	42	
18	Teknik Pangan	2	1	4	1	1	1	1	1	1	3	2	2	1	1	3	1	2	1	1	1	2	35	33	
19	Ekonomi	1	2	3	1	1	1	2	2	2	2	1	2	2	2	1	2	2	2	2	2	3	40	38	
20	Farmasi	1	1	2	2	1	2	2	1	1	3	1	4	2	2	2	1	1	2	2	2	2	38	37	
21	Psikologi	1	3	2	1	1	1	1	1	2	3	2	1	1	2	2	3	1	2	2	2	2	38	36	
22	Sekretaris	1	2	3	1	2	3	2	2	1	3	2	2	2	2	3	3	2	2	2	2	2	45	44	
23	Sekretaris	2	1	3	1	2	3	2	2	2	3	2	2	2	2	3	3	2	2	2	2	2	47	45	
24	Farmasi	2	3	2	2	3	2	2	3	3	2	3	3	2	2	3	3	2	3	3	3	2	55	53	

25	Farmasi	2	2	3	2	2	1	2	1	2	2	1	2	3	2	2	2	2	2	2	2	2	2	43	41
26	Farmasi	2	3	2	4	3	3	1	3	2	2	3	2	3	3	3	3	3	2	2	2	2	2	55	53
27	Teknik Pangan	4	3	2	3	3	3	4	2	3	3	3	3	3	3	4	2	3	4	2	3	3	66	63	
28	Teknik Pangan	3	3	2	2	2	1	4	3	4	3	3	3	3	2	1	1	3	3	3	3	2	56	54	
29	Teknik Pangan	4	2	3	2	2	2	2	2	2	1	3	2	2	2	3	2	3	2	2	2	3	50	47	
30	Psikologi	4	3	2	2	3	3	2	3	3	2	2	2	1	2	3	3	4	4	4	3	2	59	57	
31	Ekonomi	4	3	2	4	3	3	4	4	3	2	1	1	4	2	3	2	2	4	4	3	3	64	61	
32	Ekonomi	2	2	1	2	2	3	2	3	2	2	2	3	1	3	2	3	2	2	3	3	3	51	48	
33	Ekonomi	4	1	3	3	3	3	3	3	2	2	2	4	1	4	3	3	2	4	4	3	3	61	60	
34	Ekonomi	3	3	2	3	3	2	3	2	3	2	2	2	3	3	2	3	2	3	3	3	3	57	55	
35	Farmasi	4	3	2	4	3	2	3	2	3	2	2	3	3	3	2	3	2	2	3	3	3	60	57	
36	Farmasi	4	3	1	3	3	2	3	2	3	3	2	4	1	4	2	3	2	2	3	3	3	59	56	
37	Psikologi	3	2	3	3	3	3	3	2	3	3	1	3	3	3	3	2	2	2	3	2	3	57	55	
38	Psikologi	3	3	3	3	4	4	4	1	2	3	3	3	2	3	2	2	3	2	2	2	3	60	57	
39	Psikologi	3	2	2	2	2	3	3	2	2	3	2	2	3	2	2	2	2	1	2	2	1	48	45	
40	Psikologi	3	4	4	2	1	3	2	1	4	4	4	3	2	2	3	4	1	2	3	4	2	61	58	
41	Ekonomi	3	3	3	3	3	3	3	2	3	3	1	2	2	3	2	2	3	2	2	2	3	56	53	
42	Farmasi	2	3	2	1	2	2	2	2	3	2	2	2	2	3	2	2	2	2	2	2	2	47	44	
43	Teknik Pangan	4	3	2	3	2	2	2	2	4	3	1	3	4	3	2	3	3	1	2	2	1	55	52	
44	Psikologi	3	2	3	3	3	3	3	2	3	3	2	3	2	2	2	2	2	4	3	2	2	56	54	
45	Psikologi	3	3	3	3	3	3	3	2	3	3	1	2	2	3	2	2	3	2	2	2	3	56	53	
46	Teknik Pangan	3	2	2	3	3	3	3	3	3	2	1	4	3	3	2	2	3	2	3	1	2	56	53	
47	Psikologi	2	2	4	2	3	2	2	2	3	2	2	2	3	2	3	2	1	2	3	3	3	51	50	
48	Ekonomi	2	2	3	2	2	2	2	2	3	2	3	4	3	4	4	4	4	2	3	3	3	60	59	
49	Psikologi	2	2	2	2	2	1	2	2	2	3	2	1	3	2	4	3	4	2	4	4	2	53	51	
50	Teknik Pangan	2	1	4	2	4	4	4	3	2	2	3	2	4	2	3	2	4	3	2	2	3	60	58	
51	Teknik Pangan	2	2	3	2	2	2	2	2	3	2	3	4	3	4	4	4	4	2	3	3	3	60	59	
52	Ekonomi	2	2	4	2	2	2	2	3	2	2	3	2	3	2	1	3	3	3	2	3	2	52	50	
53	Sekretaris	1	1	4	3	2	2	2	2	3	4	3	2	3	3	3	4	2	3	3	3	3	59	56	

54	SKIP (Keguruan)	2	1	3	2	3	2	2	2	2	2	3	2	3	2	4	3	3	1	3	3	3	1	52	51
55	Psikologi	2	2	3	2	2	2	2	2	3	2	3	4	3	4	4	4	4	2	3	3	3	1	60	59
56	Teknik Pangan	3	3	3	3	3	3	3	3	3	3	3	3	3	4	1	4	4	2	3	3	3	1	64	63
57	Teknik Pangan	3	3	3	4	3	3	2	2	3	3	3	3	2	4	3	3	3	3	4	2	2	2	63	61
58	Ekonomi	3	4	2	3	3	3	1	3	3	3	1	3	3	4	3	4	3	3	4	3	3	3	65	62
59	Psikologi	4	3	2	4	3	2	3	2	3	3	2	4	2	4	2	3	2	4	2	3	3	1	61	60
60	Farmasi	4	3	1	3	3	3	1	4	2	2	1	3	3	2	2	3	2	2	2	2	3	1	52	51
61	Teknik Pangan	4	4	2	3	2	2	1	1	2	3	4	3	3	4	2	2	2	3	3	2	3	1	56	55
62	Farmasi	4	3	2	4	4	2	2	2	4	2	2	2	3	4	3	1	2	2	3	2	2	2	57	55
63	Psikologi	1	4	2	2	2	2	2	2	1	2	2	2	4	4	2	2	2	3	2	3	2	2	50	48
64	Teknik Pangan	3	3	2	3	3	3	2	4	3	3	2	4	3	4	1	2	3	3	4	3	3	2	63	61
65	Ekonomi	1	4	2	3	3	2	1	2	2	2	1	1	1	2	2	1	2	3	3	1	2	2	43	41
66	Teknik Pangan	1	4	2	3	3	2	1	2	2	2	1	1	1	2	2	1	2	3	3	1	2	2	43	41
67	Psikologi	4	3	3	4	3	3	2	4	3	3	2	3	3	4	3	4	2	4	4	3	4	3	71	68
68	Psikologi	4	3	3	4	3	3	2	4	3	3	2	3	3	4	3	4	2	4	4	3	4	3	71	68
69	Psikologi	3	4	4	3	3	2	3	4	4	4	2	4	4	3	2	2	2	2	2	3	4	2	66	64
70	Psikologi	3	2	4	2	3	3	3	3	4	3	2	4	3	3	3	2	3	3	1	2	4	2	62	60
71	Ekonomi	3	2	2	1	2	2	3	2	2	2	1	2	2	3	2	3	2	2	2	1	2	2	45	43
72	Ekonomi	2	2	2	4	3	3	3	3	2	3	2	3	3	3	2	2	4	1	3	2	3	3	58	55
73	Ekonomi	2	2	3	2	2	2	2	3	2	1	2	1	1	2	1	4	1	1	1	2	3	2	42	40
74	Ekonomi	3	2	3	1	2	2	2	1	2	2	1	2	1	2	3	2	1	1	2	3	2	2	42	40
75	Ekonomi	3	3	3	3	2	3	3	2	3	3	3	3	2	3	3	2	4	3	2	3	3	3	62	59
76	Ekonomi	2	3	2	1	2	2	2	2	2	1	2	3	1	2	2	1	2	4	2	1	2	2	43	41
77	Teknik Pangan	2	3	2	1	2	2	2	2	2	1	2	3	1	2	2	1	2	4	2	1	2	2	43	41
78	Farmasi	3	3	3	2	3	3	3	2	3	4	3	3	3	3	3	3	2	2	3	1	3	3	61	58
79	Teknik Pangan	3	3	3	2	3	3	3	2	3	4	3	3	3	3	3	3	2	2	3	1	3	3	61	58
80	Ekonomi	3	3	4	3	3	3	3	4	3	3	2	2	2	4	4	4	4	3	2	2	1	4	66	62
81	Ekonomi	3	4	4	3	3	3	2	1	3	2	4	3	1	4	4	1	2	3	2	2	3	2	59	57
82	Ekonomi	2	1	4	2	2	2	2	2	3	2	1	2	2	1	1	1	1	3	3	3	1	1	42	41

83	Sekretaris	3	1	2	2	2	2	2	2	1	3	2	1	2	2	1	1	1	1	2	2	2	4	41	37
84	Psikologi	3	2	2	2	2	2	1	2	2	2	2	4	2	4	4	3	3	3	3	3	1	3	55	52
85	SKIP (Keguruan)	2	2	1	2	2	2	2	2	1	2	3	4	3	1	1	1	1	3	2	2	3	1	43	42
86	Ekonomi	3	3	4	3	2	2	2	1	1	2	1	2	1	1	1	3	3	2	2	2	1	4	46	42
87	Teknik Pangan	3	2	2	2	2	2	4	2	3	4	4	2	3	3	4	4	4	3	3	3	4	1	64	63
88	Ekonomi	1	2	2	1	2	1	1	2	1	2	1	2	1	3	1	1	1	1	2	2	3	3	36	33
89	Psikologi	1	2	2	1	2	1	1	2	1	2	1	2	1	3	1	1	1	1	2	2	3	3	36	33
90	Psikologi	2	3	4	3	2	3	3	2	3	3	3	4	3	4	4	4	4	3	3	3	2	2	67	65
91	Teknik Pangan	2	3	4	3	2	3	3	2	3	3	3	4	3	4	4	4	4	3	3	3	2	2	67	65
92	Ekonomi	2	2	2	2	2	4	3	3	3	4	2	3	3	3	2	1	2	2	2	3	2	2	54	52
93	Ekonomi	2	4	2	3	2	4	2	3	3	2	2	2	2	3	2	1	3	2	2	3	2	2	53	51
94	Psikologi	2	4	2	3	2	4	2	2	2	4	2	1	3	2	2	1	3	3	4	3	3	3	57	54
95	Psikologi	2	1	1	2	1	2	1	2	2	2	1	1	2	2	1	1	2	3	4	3	3	3	42	39
96	Psikologi	3	4	2	4	3	1	2	3	3	2	2	2	2	2	1	1	2	2	2	1	2	1	47	46
97	Farmasi	2	3	3	1	2	3	2	1	2	3	1	2	2	1	1	2	3	2	2	1	2	1	42	41
98	Farmasi	2	1	3	3	3	1	2	3	1	1	3	2	2	3	1	1	2	3	3	4	3	2	49	47
99	Teknik Pangan	2	4	2	3	3	3	2	2	3	3	3	1	3	3	3	1	2	3	3	4	3	2	58	56
Mean																						49.80			
SD																						9.19			

Tabel Data Citra Tubuh Pada Remaja Putri (X)

N	Usia	Item																				Total	Total Valid
		1	2	3	4	5	6	7	8	9	10	11	12	13	14	15	16	17	18	19	20		
1	19	2	2	2	2	4	4	3	4	2	3	3	1	1	2	3	4	2	4	2	2	52	48
2	18	2	3	3	2	3	3	2	3	3	3	2	2	3	2	3	2	2	3	2	4	52	47
3	19	3	3	3	3	3	3	3	3	3	3	3	2	3	3	3	3	2	3	2	2	56	50
4	18	2	3	3	3	4	4	3	3	3	2	1	3	2	1	4	2	4	2	2	4	55	50
5	20	3	3	2	3	4	3	3	2	3	3	3	3	4	2	2	3	2	3	1	4	56	50
6	20	3	3	3	2	3	3	2	2	3	3	3	3	3	3	3	3	2	3	2	3	55	49
7	18	2	3	3	2	3	3	2	3	3	3	4	3	2	4	2	4	3	2	2	2	55	50
8	20	3	3	3	3	3	4	3	3	3	3	3	3	2	3	3	3	1	3	2	3	57	51
9	21	2	3	3	2	2	3	2	2	3	3	2	3	2	2	3	2	2	3	1	3	48	43
10	19	2	3	3	3	3	3	3	3	2	3	3	2	2	3	3	3	3	1	3	3	54	50
11	18	2	3	3	3	3	3	3	3	3	3	3	3	2	3	3	3	3	3	2	3	57	52
12	20	2	4	4	3	3	3	2	3	3	3	3	3	2	3	3	3	3	3	3	3	59	54
13	18	2	3	3	2	3	3	2	3	3	2	3	2	2	3	3	3	3	3	2	3	53	48
14	21	2	4	4	3	3	2	1	3	3	3	3	3	2	3	3	3	3	3	2	3	56	51
15	19	1	3	2	3	2	2	2	2	3	1	4	1	2	3	3	2	2	2	2	3	45	41
16	18	2	3	3	2	3	2	2	2	3	2	3	3	2	2	2	3	3	4	2	3	51	46
17	20	2	3	3	3	2	2	2	2	3	2	3	2	3	3	3	3	3	3	2	3	52	47
18	19	1	4	2	3	4	4	3	4	3	2	4	2	3	3	3	2	3	3	2	2	57	53
19	20	3	3	3	3	3	3	3	3	3	3	3	3	2	3	3	3	2	3	2	3	57	51
20	19	2	3	2	3	3	1	2	2	2	3	1	1	2	1	3	3	4	2	3	3	46	42
21	20	1	3	3	2	1	2	2	2	3	2	2	3	2	2	3	2	2	3	2	3	45	41
22	21	2	3	3	2	2	2	2	2	3	2	3	2	2	3	3	3	2	3	2	3	49	44
23	18	3	3	2	3	2	3	3	2	3	2	3	2	2	2	3	3	3	3	2	3	52	46
24	19	3	3	3	2	2	2	3	2	3	2	2	3	2	2	3	2	2	3	3	3	50	44
25	20	2	2	2	3	3	3	2	3	3	3	3	2	2	2	3	2	2	3	3	3	51	46

26	21	3	2	3	3	3	2	3	2	2	3	2	3	4	1	3	1	1	2	3	4	50	45
27	19	3	1	1	1	1	2	1	1	3	2	2	2	2	2	2	1	1	1	2	1	32	26
28	21	3	1	2	3	3	2	1	3	3	2	2	2	2	2	1	2	1	2	3	42	36	
29	20	2	4	2	2	2	2	2	3	2	2	3	3	2	3	2	4	2	2	2	2	48	44
30	20	2	3	1	2	2	2	2	2	3	2	1	1	2	1	2	3	1	2	2	2	38	33
31	20	3	1	1	2	3	1	1	3	2	2	2	2	2	2	1	1	1	1	1	2	34	29
32	19	3	3	3	2	2	2	3	3	2	2	3	3	2	3	2	3	3	2	2	2	50	45
33	18	2	1	2	1	3	1	1	2	2	1	2	2	1	2	1	1	2	1	1	1	30	26
34	21	3	2	1	3	3	2	2	1	2	2	2	2	2	2	2	1	2	2	3	41	36	
35	19	2	2	3	2	2	2	2	3	2	2	2	2	2	2	2	2	3	2	2	2	43	39
36	19	3	3	2	2	3	2	3	2	2	2	2	2	2	2	2	3	2	3	2	2	46	41
37	21	3	2	1	3	3	2	1	1	4	1	3	2	1	3	2	2	1	1	2	3	41	34
38	21	3	2	1	2	2	2	2	2	3	1	2	2	1	2	2	2	1	3	2	2	39	33
39	19	2	2	3	3	3	2	3	4	3	2	2	1	1	2	2	2	3	3	2	3	48	43
40	20	3	2	2	2	2	2	2	3	1	2	2	3	2	2	2	2	2	2	2	2	42	38
41	19	3	2	1	3	3	2	1	3	3	2	2	2	2	2	2	2	1	1	2	3	42	36
42	19	3	2	1	3	3	2	1	3	3	1	2	2	1	2	2	2	1	2	2	3	41	35
43	21	4	2	2	4	3	2	1	3	3	1	2	2	1	2	2	2	2	1	2	4	45	38
44	21	3	1	1	2	2	1	1	3	4	2	2	1	2	2	1	2	1	1	1	2	35	28
45	19	4	1	2	3	3	2	1	3	3	2	2	1	2	2	2	3	2	1	2	3	44	37
46	21	3	3	1	3	3	2	1	3	2	1	2	2	1	2	2	3	1	2	2	3	42	37
47	20	4	3	1	3	3	2	3	3	4	4	3	1	4	3	2	3	1	3	2	3	55	47
48	20	3	4	3	3	3	2	2	2	1	1	2	2	1	2	2	4	3	2	2	3	47	43
49	19	2	3	2	2	2	2	3	3	3	2	3	2	2	3	2	3	2	2	2	2	47	42
50	19	3	1	2	2	2	2	1	2	4	1	2	2	1	2	2	1	2	1	2	2	37	30
51	21	4	2	1	2	2	1	1	1	2	3	2	2	3	2	1	2	1	1	1	2	36	30
52	21	3	2	2	1	3	2	2	3	3	2	2	3	2	2	2	2	2	3	2	3	46	40
53	19	3	1	1	3	2	2	2	2	3	2	2	1	2	2	2	1	1	2	2	2	38	32
54	18	3	2	1	1	2	1	1	3	2	2	2	2	2	2	1	2	1	3	1	2	36	31

55	19	3	2	1	3	3	1	2	3	2	1	1	1	1	1	1	2	1	2	1	3	35	30
56	19	3	1	1	1	1	1	1	4	2	1	3	1	1	3	1	1	1	1	1	1	30	25
57	20	4	1	1	1	1	2	1	3	2	2	2	2	2	2	1	1	1	2	1	34	28	
58	19	3	2	1	3	3	2	1	2	4	1	2	2	1	2	2	2	1	1	2	3	40	33
59	21	3	1	2	1	2	3	1	1	1	1	2	1	1	2	3	1	2	1	3	1	33	29
60	21	4	2	1	2	2	2	2	2	3	2	2	2	2	2	2	2	1	2	2	2	41	34
61	20	3	1	2	3	3	2	2	2	2	2	2	1	2	2	2	1	2	2	2	3	41	36
62	21	3	2	2	3	3	2	1	2	4	1	2	2	1	2	2	2	2	1	2	3	42	35
63	20	3	4	1	4	2	3	1	3	3	1	3	1	1	3	3	4	1	2	3	3	49	43
64	20	3	1	2	1	2	1	1	2	1	1	2	1	1	2	1	2	1	4	1	1	31	27
65	21	3	3	3	2	3	2	3	3	2	3	3	2	3	3	2	3	3	2	2	3	53	48
66	20	3	3	4	2	2	2	3	3	2	2	3	3	2	3	2	3	4	3	2	2	53	48
67	20	2	1	1	2	2	3	1	1	2	1	2	2	1	2	3	2	1	1	3	2	35	31
68	20	3	1	1	1	1	1	1	1	4	1	1	1	1	1	1	1	1	1	1	1	25	18
69	21	3	1	1	2	2	4	1	1	4	1	1	1	1	1	4	3	1	1	4	2	39	32
70	21	3	1	1	2	2	2	1	1	2	1	2	1	1	2	2	1	1	1	2	2	31	26
71	20	4	1	2	4	4	2	3	2	3	2	2	2	2	2	2	3	2	3	2	4	51	44
72	21	3	2	1	3	3	2	1	4	2	1	2	1	1	2	2	2	1	1	2	3	39	34
73	20	4	3	2	2	2	3	3	4	2	3	2	4	3	2	3	2	2	3	3	2	54	48
74	20	2	3	2	3	2	3	1	3	1	3	3	2	3	3	3	3	2	3	3	3	51	48
75	20	4	1	1	2	2	1	1	1	4	1	2	1	1	2	1	2	1	1	1	2	32	24
76	20	3	2	1	2	2	2	2	3	3	3	2	2	3	2	2	2	1	2	2	2	43	37
77	20	3	3	3	3	3	2	3	2	2	2	2	3	2	2	2	3	3	3	2	2	50	45
78	21	4	1	1	1	1	1	1	1	3	1	2	2	1	2	1	1	1	1	1	1	28	21
79	20	2	1	1	1	2	4	3	3	3	1	3	2	1	3	4	3	1	3	4	2	47	42
80	21	3	1	3	1	2	1	1	2	1	2	1	2	2	1	1	1	1	2	1	1	30	26
81	18	3	3	1	3	3	2	1	3	2	2	2	2	2	2	2	3	1	1	2	3	43	38
82	21	4	1	3	3	2	4	2	3	3	2	2	2	2	2	4	1	3	2	4	2	51	44
83	19	3	3	3	2	3	3	3	2	2	4	2	3	4	2	3	3	3	2	3	1	54	49

84	19	3	2	1	2	2	2	2	3	2	2	2	4	2	2	2	2	1	2	2	2	42	37
85	18	4	2	2	2	2	2	3	3	4	3	3	3	3	2	2	2	2	3	2	2	52	44
86	18	3	2	1	3	3	2	1	1	2	1	2	2	2	2	1	1	2	3			37	32
87	20	3	1	1	1	1	1	1	2	3	2	2	2	2	2	1	1	1	1	1	1	30	24
88	19	4	2	2	4	4	3	4	3	2	2	2	3	2	2	3	2	2	4	3	4	57	51
89	21	3	3	2	3	2	3	3	2	3	3	2	3	3	2	3	3	3	2	3		54	49
90	21	3	1	1	1	1	1	1	1	2	1	1	4	1	1	1	2	1	1	1	1	27	22
91	19	3	1	1	1	1	1	1	2	3	1	2	1	1	2	1	1	1	1	1	1	27	21
92	21	2	3	3	4	3	2	2	3	3	2	2	2	2	2	2	2	2	3	2	3	49	44
93	20	4	1	2	2	3	1	1	3	4	1	2	1	1	2	1	1	1	3	1	3	38	30
94	21	3	2	2	3	3	2	1	2	2	2	2	3	2	2	2	2	1	1	2	3	42	37
95	21	4	3	2	4	4	2	2	1	2	3	2	2	3	2	2	3	2	2	2	4	51	45
96	21	3	1	2	3	3	2	2	2	3	2	3	3	2	3	2	1	2	2	2	3	46	40
97	19	3	2	1	1	3	2	2	3	2	1	1	1	1	1	2	2	1	2	2	3	36	31
98	18	4	2	2	3	3	3	2	2	2	2	2	2	2	2	3	2	2	2	3	3	48	42
99	19	4	2	1	2	3	3	1	1	4	1	2	3	1	2	3	2	1	1	3	2	42	34
Mean																					38.93		
SD																					8.79		

Lampiran 3. Mean Ideal dan Standard Deviasi

MEAN_{IDEAL} DAN SD_{IDEAL}Rumus Mean_{ideal} = Rumus SD_{ideal} =

$$\frac{(n_t \times j_b) + (n_r \times j_b)}{2} \quad \frac{(n_t \times j_b) - (n_r \times j_b)}{6}$$

Variabel	INPUT			OUTPUT					
				Mean _{ideal}	SD _{ideal}	Batas-batas			
X	n _t	=	4	38.93	8.79	ST/SB	X ≥	54.76	
	n _r	=	1			T/B	44.20	≤ X <	54.76
	j _b	=	18			S/C	33.65	≤ X <	44.20
						R/TB	23.10	≤ X <	33.65
						SR/STB	X <	23.10	

Variabel	INPUT			OUTPUT					
				Mean _{ideal}	SD _{ideal}	Batas-batas			
Y	n _t	=	4	49.80	9.19	ST/SB	X ≥	66.34	
	n _r	=	1			T/B	55.31	≤ X <	66.34
	j _b	=	21			S/C	44.28	≤ X <	55.31
						R/TB	33.26	≤ X <	44.28
						SR/STB	X <	33.26	

Penggolongan responden ke dalam 5 kelas: (5) sangat tinggi/sangat baik (ST/SB), (4) tinggi/baik (T/B), (3) sedang (C), (2) rendah/tidak baik(R/TB), dan (1) sangat rendah/sangat tidak baik (SR/STB).

Penggolongan menjadi lima kelas ini menggunakan standar seperti di bawah ini:

- ST/SB = $X > (\text{Mean}_{\text{ideal}} + 1,8\text{SD}_{\text{ideal}})$
- T/B = $(\text{Mean}_{\text{ideal}} + 0,6\text{SD}_{\text{ideal}}) < X < (\text{Mean}_{\text{ideal}} + 1,8\text{SD}_{\text{ideal}})$
- S = $(\text{Mean}_{\text{ideal}} - 0,6 \text{SD}_{\text{ideal}}) < x < (\text{Mean}_{\text{ideal}} + 0,6 \text{SD}_{\text{ideal}})$
- R/TB = $(\text{Mean}_{\text{ideal}} - 1,8 \text{SD}_{\text{ideal}}) < X < (\text{Mean}_{\text{ideal}} - 0,6 \text{SD}_{\text{ideal}})$
- SR/STB = $< (\text{Mean}_{\text{ideal}} - 1,8 \text{SD}_{\text{ideal}})$

Lampiran 4. Deskriptif Mean Ideal

Tabel Data Deskriptif

N	Citra Tubuh	Kode	Keterangan	Kecemasan	Kode	Keterangan
	X			Y		
1	48	4	Tinggi	49	3	Cukup
2	47	4	Tinggi	36	2	Negatif
3	50	4	Tinggi	46	3	Cukup
4	50	4	Tinggi	36	2	Negatif
5	50	4	Tinggi	35	2	Negatif
6	49	4	Tinggi	43	2	Negatif
7	50	4	Tinggi	41	2	Negatif
8	51	4	Tinggi	36	2	Negatif
9	43	3	Cukup	37	2	Negatif
10	50	4	Tinggi	42	2	Negatif
11	52	4	Tinggi	37	2	Negatif
12	54	4	Tinggi	48	3	Cukup
13	48	4	Tinggi	41	2	Negatif
14	51	4	Tinggi	40	2	Negatif
15	41	3	Cukup	50	3	Cukup
16	46	4	Tinggi	45	3	Cukup
17	47	4	Tinggi	42	2	Negatif
18	53	4	Tinggi	33	1	Sangat Negatif
19	51	4	Tinggi	38	2	Negatif
20	42	3	Cukup	37	2	Negatif
21	41	3	Cukup	36	2	Negatif
22	44	3	Cukup	44	2	Negatif
23	46	4	Tinggi	45	3	Cukup
24	44	3	Cukup	53	3	Cukup
25	46	4	Tinggi	41	2	Negatif
26	45	4	Tinggi	53	3	Cukup
27	26	2	Rendah	63	4	Positif
28	36	3	Cukup	54	3	Cukup
29	44	3	Cukup	47	3	Cukup
30	33	2	Rendah	57	4	Positif
31	29	2	Rendah	61	4	Positif
32	45	4	Tinggi	48	3	Cukup
33	26	2	Rendah	60	4	Positif
34	36	3	Cukup	55	3	Cukup
35	39	3	Cukup	57	4	Positif
36	41	3	Cukup	56	4	Positif
37	34	3	Cukup	55	3	Cukup
38	33	2	Rendah	57	4	Positif
39	43	3	Cukup	45	3	Cukup
40	38	3	Cukup	58	4	Positif
41	36	3	Cukup	53	3	Cukup
42	35	3	Cukup	44	2	Negatif
43	38	3	Cukup	52	3	Cukup
44	28	2	Rendah	54	3	Cukup
45	37	3	Cukup	53	3	Cukup
46	37	3	Cukup	53	3	Cukup
47	47	4	Tinggi	50	3	Cukup
48	43	3	Cukup	59	4	Positif
49	42	3	Cukup	51	3	Cukup
50	30	2	Rendah	58	4	Positif
51	30	2	Rendah	59	4	Positif

Tabel Data Deskriptif

N	Citra Tubuh	Kode	Keterangan	Kecemasan	Kode	Keterangan
52	40	3	Cukup	50	3	Cukup
53	32	2	Rendah	56	4	Positif
54	31	2	Rendah	51	3	Cukup
55	30	2	Rendah	59	4	Positif
56	25	2	Rendah	63	4	Positif
57	28	2	Rendah	61	4	Positif
58	33	2	Rendah	62	4	Positif
59	29	2	Rendah	60	4	Positif
60	34	3	Cukup	51	3	Cukup
61	36	3	Cukup	55	3	Cukup
62	35	3	Cukup	55	3	Cukup
63	43	3	Cukup	48	3	Cukup
64	27	2	Rendah	61	4	Positif
65	48	4	Tinggi	41	2	Negatif
66	48	4	Tinggi	41	2	Negatif
67	31	2	Rendah	68	5	Sangat Positif
68	18	1	Sangat Rendah	68	5	Sangat Positif
69	32	2	Rendah	64	4	Positif
70	26	2	Rendah	60	4	Positif
71	44	3	Cukup	43	2	Negatif
72	34	3	Cukup	55	3	Cukup
73	48	4	Tinggi	40	2	Negatif
74	48	4	Tinggi	40	2	Negatif
75	24	2	Rendah	59	4	Positif
76	37	3	Cukup	41	2	Negatif
77	45	4	Tinggi	41	2	Negatif
78	21	1	Sangat Rendah	58	4	Positif
79	42	3	Cukup	58	4	Positif
80	26	2	Rendah	62	4	Positif
81	38	3	Cukup	57	4	Positif
82	44	3	Cukup	41	2	Negatif
83	49	4	Tinggi	37	2	Negatif
84	37	3	Cukup	52	3	Cukup
85	44	3	Cukup	42	2	Negatif
86	32	2	Rendah	42	2	Negatif
87	24	2	Rendah	63	4	Positif
88	51	4	Tinggi	33	1	Sangat Negatif
89	49	4	Tinggi	33	1	Sangat Negatif
90	22	1	Sangat Rendah	65	4	Positif
91	21	1	Sangat Rendah	65	4	Positif
92	44	3	Cukup	52	3	Cukup
93	30	2	Rendah	51	3	Cukup
94	37	3	Cukup	54	3	Cukup
95	45	4	Tinggi	39	2	Negatif
96	40	3	Cukup	46	3	Cukup
97	31	2	Rendah	41	2	Negatif
98	42	3	Cukup	47	3	Cukup
99	34	3	Cukup	56	4	Positif

Lampiran 5. Hasil Uji Reliabilitas dan Validitas

UJI VALIDITAS & RELIABILITAS**1. Variabel Citra Tubuh Pada Remaja Putri (X)
Putaran 1**

RELIABILITY ANALYSIS - SCALE (ALPHA)

		Mean	Std Dev	Cases
1.	X1	2,8586	,7286	99,0
2.	X2	2,2020	,9256	99,0
3.	X3	1,9697	,8859	99,0
4.	X4	2,3636	,8263	99,0
5.	X5	2,5354	,7601	99,0
6.	X6	2,1919	,8040	99,0
7.	X7	1,8889	,8316	99,0
8.	X8	2,4242	,8218	99,0
9.	X9	2,6364	,7753	99,0
10.	X10	1,9798	,7951	99,0
11.	X11	2,2727	,6673	99,0
12.	X12	2,0909	,7836	99,0
13.	X13	1,8990	,7758	99,0
14.	X14	2,1919	,6174	99,0
15.	X15	2,2323	,7670	99,0
16.	X16	2,2323	,8309	99,0
17.	X17	1,8182	,8495	99,0
18.	X18	2,1111	,9023	99,0
19.	X19	2,0303	,6769	99,0
20.	X20	2,4949	,8253	99,0

Statistics for	Mean	Variance	Std Dev	N of Variables
SCALE	44,4242	74,4100	8,6261	20

Item-total Statistics

	Scale Mean if Item Deleted	Scale Variance if Item Deleted	Corrected Item-Total Correlation	Alpha if Item Deleted
X1	41,5657	77,7788	-,3035	,8907
X2	42,2222	63,4195	,6874	,8588
X3	42,4545	64,7403	,6233	,8617
X4	42,0606	67,1596	,4850	,8671
X5	41,8889	67,4875	,5080	,8663
X6	42,2323	65,8740	,6045	,8628
X7	42,5354	64,4554	,6937	,8593
X8	42,0000	68,8571	,3576	,8716
X9	41,7879	73,8831	-,0056	,8830
X10	42,4444	65,8209	,6167	,8624
X11	42,1515	68,1911	,5239	,8662

X12	42,3333	69,0612	,3635	,8712
X13	42,5253	67,3539	,5068	,8663
X14	42,2323	69,3230	,4577	,8683
X15	42,1919	66,1363	,6160	,8626
X16	42,1919	65,8914	,5803	,8636
X17	42,6061	65,4657	,5981	,8628
X18	42,3131	65,0948	,5839	,8632
X19	42,3939	69,4453	,3994	,8698
X20	41,9293	66,6174	,5279	,8655

Reliability Coefficients

N of Cases = 99,0

N of Items = 20

Alpha = ,8733

Putaran 2

RELIABILITY ANALYSIS - SCALE (ALPHA)

		Mean	Std Dev	Cases
1.	X2	2,2020	,9256	99,0
2.	X3	1,9697	,8859	99,0
3.	X4	2,3636	,8263	99,0
4.	X5	2,5354	,7601	99,0
5.	X6	2,1919	,8040	99,0
6.	X7	1,8889	,8316	99,0
7.	X8	2,4242	,8218	99,0
8.	X10	1,9798	,7951	99,0
9.	X11	2,2727	,6673	99,0
10.	X12	2,0909	,7836	99,0
11.	X13	1,8990	,7758	99,0
12.	X14	2,1919	,6174	99,0
13.	X15	2,2323	,7670	99,0
14.	X16	2,2323	,8309	99,0
15.	X17	1,8182	,8495	99,0
16.	X18	2,1111	,9023	99,0
17.	X19	2,0303	,6769	99,0
18.	X20	2,4949	,8253	99,0

Statistics for	Mean	Variance	Std Dev	N of
SCALE	38,9293	77,3113	8,7927	Variables 18

Item-total Statistics

	Scale Mean if Item Deleted	Scale Variance if Item Deleted	Corrected Item- Total Correlation	Alpha if Item Deleted
X2	36,7273	65,6698	,7189	,8896

X3	36,9596	67,0392	,6540	,8920
X4	36,5657	70,2278	,4622	,8982
X5	36,3939	70,3432	,5012	,8969
X6	36,7374	68,6242	,6036	,8938
X7	37,0404	67,1208	,6971	,8907
X8	36,5051	71,4362	,3743	,9008
X10	36,9495	68,5382	,6183	,8933
X11	36,6566	70,9217	,5289	,8962
X12	36,8384	71,8308	,3664	,9008
X13	37,0303	70,1725	,5029	,8968
X14	36,7374	72,1548	,4553	,8981
X15	36,6970	68,7848	,6239	,8933
X16	36,6970	68,4174	,5968	,8939
X17	37,1111	67,7732	,6303	,8928
X18	36,8182	67,5993	,5997	,8939
X19	36,8990	72,2550	,3995	,8995
X20	36,4343	69,6155	,5094	,8967

Reliability Coefficients

N of Cases = 99,0

N of Items = 18

Alpha = ,9007

2. Variabel Kecemasan Tidak Punya Pacar (Y) Putaran 1

RELIABILITY ANALYSIS - SCALE (ALPHA)

		Mean	Std Dev	Cases
1.	Y1	2,4646	,9070	99,0
2.	Y2	2,4747	,8961	99,0
3.	Y3	2,5253	,8124	99,0
4.	Y4	2,3737	,8758	99,0
5.	Y5	2,3333	,7284	99,0
6.	Y6	2,2525	,8124	99,0
7.	Y7	2,1818	,7872	99,0
8.	Y8	2,1616	,7916	99,0
9.	Y9	2,3434	,8350	99,0
10.	Y10	2,5556	,7315	99,0
11.	Y11	2,1010	,8268	99,0
12.	Y12	2,4949	,8850	99,0
13.	Y13	2,3030	,8506	99,0
14.	Y14	2,5859	,9036	99,0
15.	Y15	2,3131	,9219	99,0
16.	Y16	2,3737	1,0161	99,0
17.	Y17	2,3333	,8806	99,0
18.	Y18	2,3838	,8044	99,0
19.	Y19	2,5051	,8128	99,0
20.	Y20	2,3232	,7399	99,0
21.	Y21	2,4141	,7144	99,0

22. Y22 2,2121 ,7729 99,0

Statistics for	Mean	Variance	Std Dev	N of Variables
SCALE	52,0101	85,3774	9,2400	22

Item-total Statistics

	Scale Mean if Item Deleted	Scale Variance if Item Deleted	Corrected Item-Total Correlation	Alpha if Item Deleted
Y1	49,5455	76,5566	,5039	,8508
Y2	49,5354	79,6595	,3073	,8583
Y3	49,4848	81,7625	,2011	,8614
Y4	49,6364	75,8256	,5759	,8481
Y5	49,6768	77,7516	,5523	,8499
Y6	49,7576	77,2263	,5246	,8503
Y7	49,8283	77,7559	,5044	,8511
Y8	49,8485	78,6809	,4322	,8535
Y9	49,6667	74,7143	,6904	,8441
Y10	49,4545	81,4341	,2581	,8590
Y11	49,9091	79,9202	,3229	,8573
Y12	49,5152	78,0482	,4186	,8540
Y13	49,7071	77,5154	,4766	,8519
Y14	49,4242	74,5937	,6386	,8454
Y15	49,6970	77,1113	,4580	,8526
Y16	49,6364	76,6011	,4354	,8537
Y17	49,6768	76,9353	,4963	,8511
Y18	49,6263	79,1752	,3881	,8550
Y19	49,5051	77,2117	,5254	,8502
Y20	49,6869	80,0336	,3623	,8558
Y21	49,5960	79,9371	,3859	,8551
Y22	49,7980	84,4486	,0233	,8666

Reliability Coefficients

N of Cases = 99,0

N of Items = 22

Alpha = ,8593

Putaran 2

RELIABILITY ANALYSIS - SCALE (ALPHA)

	Mean	Std Dev	Cases
1. Y1	2,4646	,9070	99,0
2. Y2	2,4747	,8961	99,0
3. Y3	2,5253	,8124	99,0
4. Y4	2,3737	,8758	99,0
5. Y5	2,3333	,7284	99,0

6.	Y6	2,2525	,8124	99,0
7.	Y7	2,1818	,7872	99,0
8.	Y8	2,1616	,7916	99,0
9.	Y9	2,3434	,8350	99,0
10.	Y10	2,5556	,7315	99,0
11.	Y11	2,1010	,8268	99,0
12.	Y12	2,4949	,8850	99,0
13.	Y13	2,3030	,8506	99,0
14.	Y14	2,5859	,9036	99,0
15.	Y15	2,3131	,9219	99,0
16.	Y16	2,3737	1,0161	99,0
17.	Y17	2,3333	,8806	99,0
18.	Y18	2,3838	,8044	99,0
19.	Y19	2,5051	,8128	99,0
20.	Y20	2,3232	,7399	99,0
21.	Y21	2,4141	,7144	99,0

Statistics for	Mean	Variance	Std Dev	N of Variables
SCALE	49,7980	84,4486	9,1896	21

Item-total Statistics

	Scale Mean if Item Deleted	Scale Variance if Item Deleted	Corrected Item-Total Correlation	Alpha if Item Deleted
Y1	47,3333	75,8571	,4917	,8593
Y2	47,3232	78,8536	,3011	,8664
Y3	47,2727	80,7514	,2080	,8689
Y4	47,4242	75,0835	,5665	,8566
Y5	47,4646	76,8635	,5523	,8579
Y6	47,5455	76,4341	,5177	,8586
Y7	47,6162	76,9328	,4994	,8593
Y8	47,6364	77,8052	,4308	,8615
Y9	47,4545	73,8015	,6936	,8522
Y10	47,2424	80,7161	,2432	,8672
Y11	47,6970	78,7848	,3393	,8647
Y12	47,3030	76,9072	,4354	,8614
Y13	47,4949	76,5178	,4843	,8596
Y14	47,2121	73,7403	,6374	,8537
Y15	47,4848	76,1095	,4656	,8604
Y16	47,4242	75,7570	,4330	,8620
Y17	47,4646	76,0064	,4993	,8591
Y18	47,4141	78,1227	,3994	,8626
Y19	47,2929	76,3521	,5235	,8584
Y20	47,4747	79,0274	,3705	,8634
Y21	47,3838	78,8512	,4009	,8625

Reliability Coefficients

N of Cases = 99,0

N of Items = 21

Alpha = ,8666

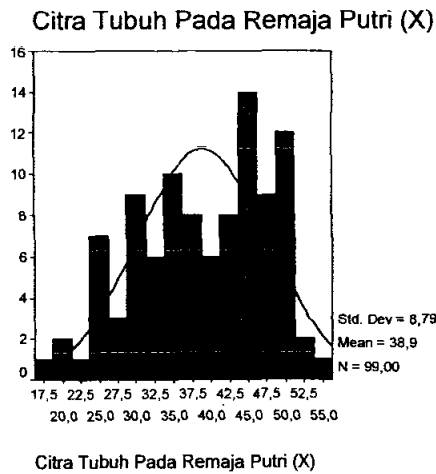
Lampiran 8. Hasil Uji Normalitas

UJI NORMALITAS**One-Sample Kolmogorov-Smirnov Test**

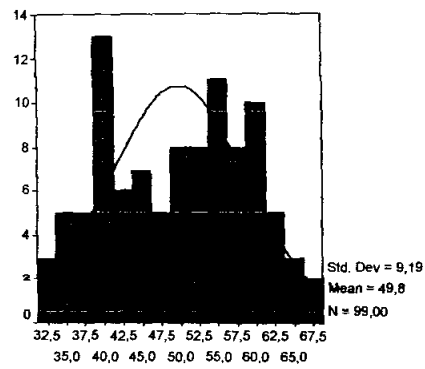
		Citra Tubuh Pada Remaja Putri (X)	Kecemasan Tidak Punya Pacar (Y)
N		99	99
Normal Parameters ^{a,b}	Mean	38,9293	49,7980
	Std. Deviation	8,79268	9,18959
Most Extreme Differences	Absolute	,103	,105
	Positive	,055	,105
	Negative	-,103	-,081
Kolmogorov-Smirnov Z		1,020	1,044
Asymp. Sig. (2-tailed)		,249	,225

a. Test distribution is Normal.

b. Calculated from data.

Histogram

Kecemasan Tidak Punya Pacar (Y)



Kecemasan Tidak Punya Pacar (Y)

Lampiran 9. Hasil Uji Linearitas

UJI LINIERITAS

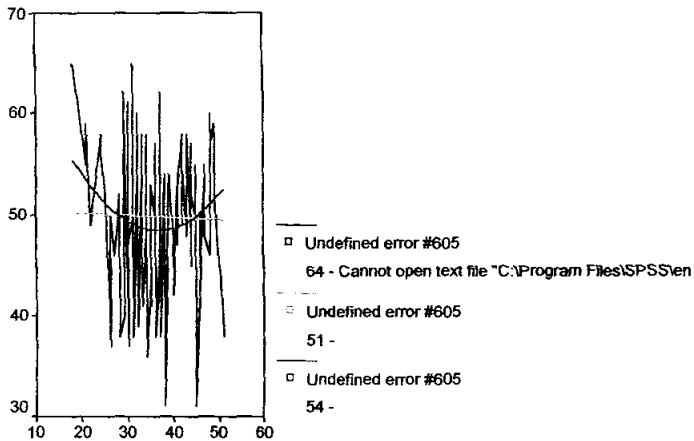
Curve Fit

MODEL: MOD_1.

Independent: X

Dependent	Mth	Rsq	d.f.	F	Sigf	b0	b1	b2
Y	LIN	,662	97	190,09	,000	82,9053	-,8504	
Y	QUA	,665	96	95,43	,000	74,0131	-,3479	-,0067

Kecemasan Tidak Punya Pacar (Y)



Citra Tubuh Pada Remaja Putri (X)

ANOVA Table

			Sum of Squares	df	Mean Square	F	Sig.
Kecemasan Tidak Punya Pacar (Y) * Citra Tubuh Pada Remaja Putri (X)	Between Groups	(Combined) Linearity	6022,093	33	182,488	5,263	,000
		Deviation from Linearity	5479,781	1	5479,781	158,033	,000
			542,312	32	16,947	,489	,986
	Within Groups		2253,867	65	34,675		
	Total		8275,960	98			

Lampiran 10. Hasil Uji Korelasi

UJI KORELASI**Correlations****Descriptive Statistics**

	Mean	Std. Deviation	N
Citra Tubuh Pada Remaja Putri (X)	38,9293	8,79268	99
Kecemasan Tidak Punya Pacar (Y)	49,7980	9,18959	99

Correlations

		Citra Tubuh Pada Remaja Putri (X)	Kecemasan Tidak Punya Pacar (Y)
Citra Tubuh Pada Remaja Putri (X)	Pearson Correlation	1	-,814**
	Sig. (2-tailed)	.	,000
	N	99	99
Kecemasan Tidak Punya Pacar (Y)	Pearson Correlation	-,814**	1
	Sig. (2-tailed)	,000	.
	N	99	99

** . Correlation is significant at the 0.01 level (2-tailed).



YAYASAN WIDYA MANDALA SURABAYA
UNIVERSITAS KATOLIK WIDYA MANDALA SURABAYA

Jl. Dinoyo 42-44 Telp. (031) 5678478, 5682211 Fax. 5610818 Surabaya 60265
Website : <http://www.wima.ac.id> Email : info@wima.ac.id

Nomor : 0809/WM01/T/2007 13 April 2007
Lampiran : —
Perihal : Ijin Penyebaran Angket



Kepada : Yth. Dekan Fakultas Psikologi
Unika Widya Mandala
Surabaya

Memperhatikan surat Saudara Nomor : 0381/WM07/T/2007 tertanggal
3 April 2007 perihal Ijin Penyebaran Angket atas nama mahasiswa :

Nama : Rosallyn Tanoyo
Nomor Pokok : 7103000046

untuk menyelesaikan tugas skripsi dengan judul "**Kecemasan Belum Memiliki Pacar dan Citra Tubuh Pada Remaja Putri**" di lingkungan Universitas Katolik Widya Mandala Surabaya, dengan hormat diberitahukan bahwa permohonan tersebut dapat disetujui.

Demikian pemberitahuan kami, terima kasih atas perhatian Saudara.

A.n. Rektor
Wakil Rektor I,



TEMBUSAN Kepada Yth.:
- Mahasiswa ybs.

Drs. Kuncoro Foe, G.Dip.Sc., Ph.D.
NIK. 241.90.0176