

LAMPIRAN

TABEL DATA ASPIRASI KARIR

N	BUTIR																														Total	Total Valid
	1	2	3	4	5	6	7	8	9	10	11	12	13	14	15	16	17	18	19	20	21	22	23	24	25	26	27	28	29	30		
1	4	5	3	5	5	1	5	4	2	3	4	4	2	5	6	5	5	1	3	3	6	6	3	4	3	6	3	5	3	1	115	89
2	4	4	3	3	5	2	3	3	5	2	4	6	6	1	5	4	4	5	2	3	5	3	3	3	3	4	4	3	3	2	107	77
3	5	5	4	3	5	1	4	2	2	2	4	5	3	2	3	5	4	2	5	1	2	4	1	2	4	5	5	2	5	1	98	68
4	3	5	4	3	2	3	5	3	5	3	3	4	3	5	4	2	3	4	5	4	5	3	4	4	5	3	3	3	4	3	110	77
5	4	3	3	5	5	1	3	2	5	2	4	6	6	1	5	4	4	5	2	3	5	3	3	3	3	4	4	2	3	1	104	74
6	5	5	5	3	5	1	4	3	2	2	4	5	3	2	3	5	4	2	5	4	2	4	4	2	5	5	5	2	4	1	106	77
7	3	5	4	4	2	2	5	4	5	3	3	4	3	5	4	2	3	4	5	4	5	3	4	4	5	3	3	4	4	2	111	78
8	4	4	4	3	5	1	3	5	5	1	4	6	6	1	5	4	4	5	2	4	5	3	4	3	5	4	4	3	3	1	111	81
9	4	5	4	6	4	4	5	5	2	3	4	4	5	2	6	6	4	2	2	3	6	6	3	4	3	5	3	3	3	4	120	98
10	4	4	5	3	5	1	3	2	5	4	4	6	6	1	5	4	4	5	2	5	5	3	5	3	4	4	4	3	3	1	113	83
11	5	4	4	3	5	1	4	5	2	2	4	5	3	2	3	5	4	2	5	4	2	4	4	2	4	5	5	2	4	1	105	76
12	3	5	4	3	2	1	5	3	5	2	3	4	3	5	4	2	3	4	5	4	5	3	4	4	3	3	3	2	4	1	102	69
13	1	1	2	2	2	1	2	1	3	2	2	2	3	2	2	3	5	3	1	4	4	2	4	1	3	2	2	3	2	1	68	48
14	4	6	3	6	3	4	4	4	2	4	4	4	3	1	4	6	4	3	1	6	6	5	6	5	4	6	4	4	4	4	124	101
15	4	5	4	6	4	3	5	5	2	3	4	4	5	2	6	6	4	2	2	3	6	6	3	4	5	5	5	4	2	3	122	99
16	3	1	1	2	2	2	2	2	3	2	2	2	3	2	2	3	5	3	1	1	4	2	1	1	3	2	2	3	2	2	66	46
17	5	4	4	6	4	4	5	4	2	2	4	4	5	2	6	6	4	2	2	4	6	6	4	4	4	5	3	4	3	4	122	100
18	4	5	5	6	4	5	5	3	2	2	4	4	5	2	6	6	4	2	2	5	6	6	5	4	4	5	3	5	3	5	127	105
19	5	4	4	5	5	3	5	5	2	3	4	4	5	2	6	6	4	3	1	3	6	6	3	4	3	5	3	3	3	3	118	96
20	6	6	6	5	4	4	5	4	6	5	2	2	6	5	6	6	5	6	6	5	5	5	5	5	5	6	6	5	5	4	151	110
21	5	5	3	3	5	2	4	3	2	2	4	5	3	2	3	5	5	2	5	2	5	4	2	2	3	5	5	4	4	2	106	76
22	4	5	3	6	4	1	5	5	2	4	4	4	5	2	6	6	4	2	2	4	6	6	4	4	5	5	3	6	3	1	121	99
23	4	5	3	6	4	5	5	5	2	2	4	4	5	2	6	6	4	1	3	4	6	5	4	4	3	4	3	4	3	5	121	99
24	4	5	4	6	4	5	5	5	2	2	4	4	5	2	6	5	5	2	2	4	5	6	4	4	4	5	3	3	2	5	122	100
25	4	4	4	3	5	2	3	3	5	1	4	6	6	1	5	4	4	5	2	2	5	3	2	3	3	4	4	2	3	2	104	74
26	5	5	3	3	5	3	4	4	2	3	4	5	3	2	3	5	4	2	5	3	2	4	3	2	3	5	5	2	4	3	106	77
27	3	5	4	3	2	3	5	3	5	3	3	4	3	5	4	2	3	4	5	5	5	3	5	4	4	3	3	3	4	3	111	78
28	4	4	5	3	5	1	3	4	5	2	4	6	6	1	5	4	4	5	2	4	5	3	4	3	4	4	4	5	3	1	113	83
29	4	4	3	3	5	3	3	2	5	2	4	6	6	1	5	4	4	5	2	3	5	3	3	3	3	4	4	1	3	3	106	76
30	5	5	1	3	5	1	4	5	2	2	4	5	3	2	3	5	4	2	5	3	2	4	3	2	6	5	5	2	4	1	103	74
31	1	2	1	2	2	2	2	5	3	1	2	2	3	2	2	3	5	3	1	4	4	2	4	1	2	2	1	2	2	2	70	50
32	1	1	2	2	2	2	2	3	3	3	3	2	2	3	2	2	3	5	3	1	2	4	2	2	1	3	2	2	2	2	68	48

N	BUTIR																												Total	Total Valid		
	1	2	3	4	5	6	7	8	9	10	11	12	13	14	15	16	17	18	19	20	21	22	23	24	25	26	27	28				
33	4	4	4	6	4	1	5	4	2	3	4	4	5	2	6	6	4	2	2	3	6	6	3	4	4	5	3	5	3	1	115	93
34	4	5	5	6	4	2	5	4	2	5	4	4	4	3	6	6	4	1	3	5	6	6	5	4	5	5	3	5	3	2	126	103
35	4	5	5	6	4	5	5	3	2	2	4	4	5	2	6	6	4	2	2	5	6	6	5	4	5	4	4	3	4	5	127	103
36	4	6	4	3	5	4	4	3	2	3	4	5	3	2	3	5	4	2	5	3	2	4	3	2	4	5	5	3	4	4	110	81
37	5	4	5	4	1	4	5	4	3	3	3	3	1	1	4	3	5	1	2	5	5	6	5	3	3	5	2	4	4	4	107	86
38	5	5	2	3	5	1	4	4	2	3	4	5	3	2	3	5	4	2	5	4	2	4	4	2	4	5	5	3	4	1	105	76
39	3	5	5	3	2	2	5	3	5	2	3	4	3	5	4	2	3	4	5	3	5	3	3	4	3	3	3	3	4	2	104	71
40	5	5	2	3	5	1	4	3	2	2	4	5	3	2	3	5	4	2	5	5	2	4	5	2	5	5	5	3	4	1	106	77
41	4	5	3	6	4	3	5	1	2	2	4	4	5	2	6	6	4	2	2	5	6	6	5	4	5	5	3	5	3	3	120	98
42	3	3	3	3	3	2	3	3	3	2	3	3	3	2	3	2	3	4	5	6	5	3	6	4	4	3	3	2	4	2	98	71
43	5	5	2	3	5	1	4	3	2	2	4	5	3	2	3	5	4	2	5	4	2	4	4	2	3	5	5	4	4	1	103	74
44	4	4	5	3	5	3	3	3	5	2	4	6	6	1	5	4	4	5	2	5	5	3	5	3	4	4	4	3	3	3	116	86
45	4	4	5	3	5	2	3	3	5	3	4	6	6	1	5	4	4	5	2	5	5	3	5	3	3	4	4	3	3	2	114	84
46	5	5	2	3	5	1	4	2	2	2	4	5	3	2	3	5	4	2	5	5	2	4	5	2	5	5	5	5	4	1	107	78
47	1	1	2	2	2	1	2	2	3	2	2	2	3	2	2	3	5	3	1	3	4	2	3	1	3	2	2	3	2	1	67	47
48	1	1	2	2	2	1	2	2	3	2	2	2	3	2	2	3	5	3	1	4	4	2	4	1	5	2	2	2	2	1	70	50
49	4	4	5	3	5	2	3	4	5	2	4	6	6	1	5	4	4	5	2	5	5	3	5	3	4	4	4	2	3	2	114	84
50	4	5	2	2	2	1	2	5	3	2	2	5	3	3	2	3	5	3	1	1	4	1	1	1	3	1	2	3	1	74	51	
51	4	5	4	6	4	3	5	5	2	5	4	4	5	2	6	6	4	2	2	4	6	6	4	4	4	5	3	6	3	3	126	104
52	3	5	5	3	2	3	5	3	5	3	3	4	3	5	4	2	3	4	5	3	5	3	3	4	3	3	3	3	4	3	107	74
53	4	5	4	6	4	3	5	5	2	2	4	4	5	2	6	6	4	2	2	5	6	6	5	4	5	5	3	5	3	3	125	103
54	5	5	5	5	4	5	5	3	6	3	2	2	5	5	5	6	5	6	5	5	5	5	5	5	5	5	6	5	3	5	141	102
55	4	5	6	6	4	3	5	2	2	2	4	4	2	5	6	6	4	2	2	2	6	6	2	4	3	4	3	3	3	3	113	88
56	5	4	5	6	4	3	5	5	2	2	4	4	5	2	6	6	4	2	2	4	6	6	4	4	3	5	3	5	3	3	122	100
57	4	5	4	6	4	3	5	2	2	3	4	4	5	2	6	6	4	2	2	4	6	6	4	4	5	5	3	3	3	3	119	97
58	5	5	2	3	5	2	4	2	2	1	4	5	3	2	3	5	4	2	5	5	2	4	5	2	4	5	5	2	4	2	104	75
59	4	5	4	6	4	2	5	3	2	3	4	4	5	2	6	6	4	2	2	4	6	6	4	4	4	5	3	3	3	2	117	95
60	3	1	2	2	2	1	1	1	3	1	3	2	3	2	1	3	5	2	3	1	4	2	1	2	3	2	2	1	3	1	63	41
61	4	5	4	6	4	3	5	4	2	4	4	4	5	2	6	6	4	2	2	5	6	6	5	4	4	5	3	5	3	3	125	103
62	4	5	4	6	4	3	5	3	2	5	4	4	5	2	6	6	4	2	2	6	6	6	6	4	6	5	3	3	3	3	127	105
63	5	4	4	6	4	5	5	4	2	4	2	3	5	3	5	5	5	3	3	5	6	5	5	4	4	5	3	4	2	5	125	101
64	4	5	4	6	4	1	5	3	2	3	4	4	5	2	6	6	4	2	2	5	6	6	5	4	5	4	2	5	3	1	118	97
65	3	5	5	3	2	2	5	3	5	2	3	4	3	5	4	2	3	4	5	4	5	3	4	4	4	3	3	2	4	2	106	73
66	4	5	4	6	4	6	5	5	2	5	4	4	5	2	6	6	4	2	2	5	6	6	5	4	5	5	3	3	3	6	132	110

N	BUTIR																														Total	Total Valid
	1	2	3	4	5	6	7	8	9	10	11	12	13	14	15	16	17	18	19	20	21	22	23	24	25	26	27	28	29	30		
67	3	4	5	3	2	3	3	2	5	2	3	3	3	5	4	2	3	4	5	3	5	3	3	4	3	3	2	2	4	3	99	68
68	4	4	4	4	4	1	4	2	4	2	5	4	5	5	4	5	4	2	5	4	2	4	4	2	5	5	5	5	4	1	113	80
69	1	2	2	2	2	1	2	1	3	2	2	2	3	2	2	3	5	3	1	3	4	2	3	1	3	2	2	2	2	1	66	46
70	4	4	5	3	5	2	3	2	5	2	4	6	6	1	5	4	4	5	2	4	5	3	4	3	4	4	4	2	3	2	110	80
71	5	4	4	2	6	1	3	4	6	2	4	4	3	2	6	5	4	2	5	2	5	3	2	2	3	5	4	3	3	1	105	75
72	4	5	4	6	4	3	5	3	2	3	4	4	5	2	6	6	4	2	2	5	6	6	5	4	4	5	3	5	3	3	123	101
73	4	5	5	4	4	1	4	6	5	2	2	2	5	5	4	6	5	6	6	6	6	5	6	5	6	6	5	6	5	1	138	99
74	4	5	4	6	4	3	5	5	2	2	4	4	5	2	6	6	4	2	2	4	6	6	4	4	4	5	3	5	3	3	122	100
75	4	4	5	3	5	1	3	5	5	2	4	6	6	1	5	4	4	5	2	2	5	3	2	3	5	4	4	5	3	1	111	81
76	5	5	3	2	1	1	5	1	2	1	3	4	5	3	5	4	3	5	5	6	4	2	6	2	3	4	4	1	2	1	98	70
77	4	5	4	6	4	5	5	4	2	1	4	4	5	2	6	6	4	2	2	5	6	6	5	4	4	5	3	4	2	5	124	103
78	3	5	3	3	2	1	5	5	5	3	3	4	3	5	4	2	3	4	5	2	5	3	2	4	5	3	3	5	4	1	105	72
79	4	5	4	6	4	3	5	4	2	3	4	4	5	2	6	6	4	2	2	5	6	6	5	4	5	5	3	4	3	3	124	102
80	4	5	4	6	4	2	5	3	2	3	4	4	5	2	6	6	4	2	2	5	6	6	5	4	5	5	3	5	3	2	122	100
81	4	5	4	6	4	1	5	2	2	2	4	4	5	2	6	6	4	2	2	4	6	6	4	4	3	5	3	2	3	1	111	89
82	5	5	2	3	5	3	4	1	2	2	4	5	3	2	3	5	4	2	5	4	2	4	4	2	3	5	5	3	4	3	104	75
83	5	5	3	2	1	1	5	1	2	2	3	4	5	3	5	4	3	5	5	4	4	2	4	2	3	4	4	2	2	1	96	68
84	1	1	2	2	2	1	2	2	3	1	2	2	3	2	2	3	5	3	1	3	4	2	3	1	3	2	2	1	1	1	63	44
85	2	1	2	2	2	1	2	1	3	2	2	2	3	2	2	3	5	3	1	3	4	2	3	1	3	2	2	2	2	1	66	46
86	5	5	3	2	1	4	5	5	2	3	3	4	5	3	5	4	3	5	5	6	4	2	6	2	5	4	4	4	2	4	115	87
87	5	4	2	3	5	1	4	3	2	1	4	4	2	5	5	5	5	5	2	2	2	4	2	2	4	4	5	1	3	1	97	66
88	5	5	3	2	1	3	5	5	2	5	3	4	5	3	5	4	3	5	5	4	4	2	4	2	3	4	4	3	1	3	107	80
89	5	5	2	3	5	2	4	4	2	2	4	5	3	2	3	5	4	2	5	3	2	4	3	2	4	5	5	3	4	2	104	75
90	4	5	4	6	4	3	5	5	2	2	4	4	5	2	6	6	4	2	2	4	6	6	4	4	3	4	3	3	3	3	118	96
91	4	5	4	6	4	5	5	5	2	5	4	4	5	2	6	6	4	2	2	3	6	6	3	4	4	5	3	5	3	5	127	105
92	1	1	2	2	2	2	2	1	3	1	2	2	3	2	2	3	5	3	1	4	4	2	4	1	4	2	2	1	2	2	68	48
93	1	1	2	2	2	1	2	4	3	1	2	2	3	2	2	3	5	3	1	6	4	2	6	1	4	2	2	4	2	1	76	56
94	5	5	3	2	1	3	5	6	2	5	3	4	5	3	5	4	3	5	5	4	4	2	4	2	3	4	4	2	1	3	107	80
95	4	4	5	3	5	1	3	1	5	1	4	6	6	1	5	4	4	5	2	6	5	3	6	3	4	4	4	2	3	1	110	80
96	5	5	2	3	5	2	4	3	2	3	4	5	3	2	3	5	4	2	5	5	2	4	5	2	4	5	5	3	4	2	108	79

TABEL DATA CINDERELLA COMPLEX

N	BUTIR																																	Total	Total Valid										
	1	2	3	4	5	6	7	8	9	10	11	12	13	14	15	16	17	18	19	20	21	22	23	24	25	26	27	28	29	30	31	32	33												
1	4	5	5	2	5	6	4	4	5	2	3	3	3	0	4	4	4	6	6	6	3	3	6	4	2	3	4	3	4	4	4	4	4	3	3	5	5	4	2	6	2	155	76		
2	2	3	3	5	5	6	4	4	5	1	4	3	1	2	2	4	2	4	5	4	2	3	3	3	1	2	3	4	3	4	4	3	4	4	3	4	4	3	4	4	1	6	2	132	66
3	5	4	5	3	6	6	3	5	5	5	3	2	1	1	1	5	3	3	3	6	6	2	3	2	1	2	2	5	3	3	5	1	1	1	6	5	6	3	1	2	135	66			
4	6	3	4	2	4	3	2	4	4	2	3	3	2	2	2	5	2	3	4	3	3	1	4	3	2	2	2	3	2	2	3	3	1	3	6	4	6	1	3	4	121	56			
5	4	2	3	2	6	4	2	5	5	2	5	4	1	1	3	3	2	4	4	4	1	1	2	3	2	3	4	4	4	4	2	1	1	2	5	1	4	5	2	118	53				
6	6	6	6	6	6	6	1	5	5	4	2	1	1	1	1	6	1	2	2	3	1	5	6	1	1	1	5	4	2	2	1	1	1	1	6	4	1	3	1	6	124	61			
7	3	4	6	5	5	3	2	3	4	5	3	2	1	1	6	2	3	3	3	1	3	3	1	1	2	2	3	2	2	2	1	2	1	5	3	4	4	3	2	113	55				
8	4	3	4	2	6	6	4	4	6	4	2	3	3	1	3	2	5	3	3	3	1	2	2	2	1	2	2	4	2	2	2	5	2	2	4	2	4	1	4	3	120	52			
9	4	6	6	3	5	6	1	6	6	2	6	1	2	1	3	6	6	6	6	3	3	2	4	4	1	2	1	6	3	5	4	1	1	1	6	2	6	1	3	3	144	73			
10	3	2	5	4	6	6	6	4	3	2	1	3	1	1	4	1	4	2	3	2	2	3	4	2	5	2	4	5	3	3	3	1	4	2	3	5	4	1	4	2	125	55			
11	1	4	4	6	6	6	4	5	5	5	2	3	2	1	2	5	2	3	4	3	6	2	6	6	2	2	3	5	3	3	5	3	1	1	2	2	1	1	5	1	132	61			
12	2	2	5	4	6	6	3	5	5	5	2	3	4	6	2	5	4	3	2	3	2	3	4	3	4	2	2	5	4	4	4	3	3	2	1	4	6	2	2	3	140	58			
13	1	3	4	3	3	3	3	4	4	2	3	4	3	3	3	3	3	3	4	4	5	1	3	4	3	4	4	4	4	4	3	1	4	2	2	2	2	3	4	124	48				
14	2	1	3	3	3	5	2	3	3	2	4	5	1	1	3	4	3	4	4	1	1	3	2	3	3	3	3	2	4	2	3	1	3	1	1	3	2	2	3	2	102	41			
15	2	1	4	5	4	5	5	3	4	4	2	5	2	3	2	5	3	3	4	4	3	5	2	2	5	3	2	4	2	2	3	1	3	1	1	2	3	4	4	2	124	50			
16	6	5	6	3	6	2	4	5	5	2	2	3	2	0	3	5	6	5	4	4	2	1	1	3	4	3	6	4	3	4	4	1	1	6	5	6	6	6	6	1	151	70			
17	3	2	2	2	3	5	3	3	5	4	3	2	1	3	2	4	2	3	3	3	3	3	2	3	2	3	3	4	2	3	4	3	1	1	4	3	3	6	4	3	118	50			
18	4	2	4	3	6	5	2	2	4	5	2	3	5	4	4	4	4	4	4	4	2	3	2	3	3	3	2	3	3	4	2	3	1	2	2	3	2	3	3	3	127	50			
19	3	2	5	4	4	4	2	4	4	4	4	3	5	3	2	5	3	3	4	4	3	3	3	2	3	4	2	2	4	4	3	3	2	1	1	2	2	1	2	3	122	49			
20	2	1	2	1	4	6	5	4	5	3	1	2	4	0	3	2	5	1	2	5	3	2	2	2	5	4	1	5	5	4	4	5	2	1	5	5	0	1	4	1	119	49			
21	1	1	2	5	5	6	5	3	5	2	5	3	2	3	3	5	3	4	5	5	2	2	5	3	2	6	2	5	3	4	5	4	1	2	2	4	2	2	5	2	136	62			
22	5	4	5	3	6	5	3	1	3	3	2	1	3	3	2	5	2	4	3	3	3	2	4	3	2	2	1	3	2	2	3	3	0	3	2	2	2	3	5	3	116	49			
23	1	2	3	3	2	5	4	3	5	4	2	4	2	2	3	3	4	4	3	3	2	1	3	2	3	2	2	2	4	4	4	1	2	1	2	2	1	2	2	2	106	44			
24	4	1	6	2	2	5	3	4	5	5	2	3	1	2	2	5	1	3	2	3	1	1	4	2	1	3	2	1	2	3	1	3	1	1	1	2	3	3	3	2	101	40			
25	3	3	5	2	5	5	5	6	4	3	3	2	2	4	5	2	3	5	5	3	4	5	4	3	3	4	4	3	4	3	3	4	3	2	4	3	5	5	3	149	64				
26	2	2	4	5	4	2	2	5	4	3	4	5	2	3	4	5	3	4	4	4	2	2	4	3	2	4	3	4	3	4	3	3	4	4	2	3	2	4	3	4	134	55			
27	1	1	4	3	4	3	4	4	4	4	3	3	2	3	2	4	3	3	3	3	2	2	4	5	3	2	4	2	4	2	3	4	1	2	2	4	4	4	5	3	3	122	55		
28	1	3	6	2	6	6	4	2	5	5	2	3	2	2	2	5	3	2	2	3	2	4	6	1	1	2	2	4	2	3	4	1	1	4	4	3	4	5	5	2	126	58			
29	4	3	5	5	4	5	3	6	5	5	2	3	2	2	2	5	2	4	4	4	2	4	6	2	3	2	2	5	4	4	5	4	5	3	2	5	0	5	6	3	147	67			
30	1	1	5	5	6	5	4	5	5	2	4	2	3	2	4	6	6	6	5	4	3	3	3	5	5	2	4	3	3	1	4	3	1	1	3	2	3	2	4	3	139	60			
31	2	2	2	1	4	5	3	4	5	4	2	2	3	0	3	2	5	3	2	3	3	3	3	3	5	4	1	5	5	4	4	5	2	1	2	2	3	1	2	5	120	47			
32	2	4	5	3	6	6	1	2	4	3	3	2	1	2	1	4	3	4	5	5	1	2	4	2	1	3	2	4	3	2	2	3	4	4	4	2	4	1	4	2	120	57			
33	1	2	5	3	6	6	2	2	4	5	2	3	2	2	3	4	2	3	4	4	3	4	4	3	3	2	2	3	2	3	3	2	3	5	3	3	2	3	4	2	125	56			
34	2	5	2	5	5	2	3	2	2	5	5	2	2	2	3	5	3	2	2	2	3	2	5	2	2	2	2	2	2	2	1	2	2	2	2	3	2	2	2	3	106	45			
35	1	2	5	3	2	6	4	4	5	2	5	2	2	1	2	2	1	2	2	2	2	1	4	2	2	5	2	3	2	2	2	2	4	2	1	4	3	4	2	1	105	41			
36	3	4	4	3	3	5	0	4	4	5	3	2	3	4	1	3	3	3	2	4	4	3	4	4	1	3	3	4	1	3	4	3	2	4	5	4	6	2	5	2	130	61			
37	2	2	3	2	2	5	3	2	5	2	2	2	2	2	2	4	2	2	2	2	2	2	2	4	3	2	2	2	2	3	2	2	3	2	2	4	2	2	2	2	97	38			
38	2	2	5	4	6	6	4	4	4	4	4	2	2	2	2	5	4	3	2	3	2	5	4	3	1	2	4	2	3	5	2	2	4	5	3	4	5	4	2	134	59				
39	4	6	5	3	6	6	3	4	5	3	4	2	3	4	4	2	5	4	4	4	3	5	3	1	2	3	5	5	4	3	3	4	4	6	6	6	4	3	3	159	74				
40	1	4	6	1	6	6	1	4	5	3	3	1	3	3	2	5	0	3	2	2	2	1	5	1	1	1	1	1	2	4	2	1	2	5	4	5	2	3	1	106	56				
41	2	1	5	1	4	5	2	2	5	6	3	3	3	2	3	4	2	2	5	2	2	2	2	1	1	1	1	2	1	2	0	5	2	5	3	6	2	2	5	2	109	44			
42	1	2	6	4	5	5	3	4	5	2	5	2	5	3	2	5	3	5	5	4	3	2	4	2	2	3	3	4	3	4	4	3	3	4	4	4	4	4	4	4	145	65			
43	1	1	5	2	4	5	2	1	2	4	2	2	1	2	2	5	3	3	3	3	3	2	1	2	3	2	2	2	4	2	3	3	2	4	4	2	2	1	2	4	2	102	37		

N	BUTIR																																													Total	Total Valid
	1	2	3	4	5	6	7	8	9	10	11	12	13	14	15	16	17	18	19	20	21	22	23	24	25	26	27	28	29	30	31	32	33	34	35	36	37	38	39	40	41	42	43	44	45		
1	1	3	4	5	3	4	4	6	5	3	3	2	4	3	2	2	2	1	3	3	1	4	4	4	2	4	4	4	3	3	3	1	1	1	3	116	39										
2	3	2	5	4	5	6	4	4	4	3	3	2	3	3	2	4	3	4	3	2	3	4	5	2	2	2	3	4	3	4	3	3	5	4	4	3	2	2	132	57							
3	4	5	5	2	6	5	2	2	5	5	2	2	2	2	4	3	2	2	2	2	2	5	5	2	2	3	5	2	2	4	3	5	2	5	5	6	5	5	2	136	60						
4	1	2	4	3	4	4	2	2	5	3	2	2	3	3	3	5	3	3	3	3	4	1	2	2	2	2	3	5	2	4	5	3	3	2	2	2	2	4	3	115	47						
5	5	5	3	6	6	6	5	5	5	4	2	3	3	3	2	4	2	2	3	3	1	4	6	5	2	2	3	6	1	2	5	2	5	4	6	5	6	5	5	2	154	74					
6	4	4	5	2	5	5	4	5	5	5	2	3	1	1	2	6	1	3	2	2	2	2	5	4	2	2	3	3	3	4	3	4	3	2	3	3	5	3	2	128	53						
7	1	6	6	6	6	6	3	4	5	3	1	6	2	4	3	3	4	6	6	6	3	1	6	6	1	2	2	5	2	4	3	3	5	3	1	2	4	5	5	152	69						
8	3	3	4	3	6	6	3	3	5	5	2	1	1	3	2	6	1	1	2	3	3	5	3	2	3	1	2	4	4	4	3	2	3	4	2	4	5	1	125	56							
9	3	5	4	3	4	5	2	4	4	4	2	3	2	3	1	5	1	4	3	4	2	3	5	3	2	2	2	6	3	4	5	2	5	4	3	4	6	4	5	4	140	66					
10	4	2	3	1	4	6	3	2	5	1	1	1	1	2	1	2	2	2	1	2	2	3	3	2	2	1	2	3	2	2	2	2	2	1	2	2	3	3	2	92	38						
11	5	1	1	4	2	6	4	4	4	2	4	2	2	1	2	5	1	5	5	2	1	2	1	4	2	2	2	1	4	2	2	3	3	1	2	1	4	1	5	3	6	112	44				
12	2	2	5	2	3	5	3	2	2	2	2	2	2	2	2	4	1	1	2	2	1	1	4	2	2	2	1	4	2	2	3	2	4	4	1	3	2	1	1	2	92	33					
13	3	3	5	4	6	6	4	4	5	3	2	3	5	0	2	4	5	4	4	4	3	4	6	3	4	3	3	5	3	4	4	3	5	3	4	5	4	1	4	3	150	69					
14	1	2	3	3	4	3	4	4	4	3	4	3	4	4	2	4	3	3	3	3	4	3	3	2	1	3	3	4	2	2	3	2	3	3	3	5	3	3	3	4	123	51					
15	3	1	2	6	6	6	4	6	6	1	5	3	1	2	2	6	2	6	6	6	6	2	2	6	2	5	3	5	4	4	6	5	2	1	1	6	1	5	6	2	154	71					
16	4	3	4	2	5	3	2	4	4	2	2	3	2	2	2	5	4	2	2	3	2	2	4	2	3	3	3	3	4	3	3	2	3	2	4	4	3	3	3	3	119	51					
17	2	3	5	3	5	5	4	5	6	5	4	3	2	2	2	5	3	2	3	2	2	2	4	3	1	2	3	4	3	3	4	4	3	4	3	5	2	2	4	2	131	56					
18	1	1	6	1	6	6	5	6	6	2	6	6	1	2	1	4	1	1	3	5	1	1	1	4	1	3	3	5	3	3	4	2	1	1	1	4	4	1	5	2	120	52					
19	1	3	1	1	4	6	1	4	2	2	1	2	1	1	3	4	2	1	1	1	1	2	2	0	1	1	5	5	2	1	2	2	2	1	2	4	5	5	1	2	88	36					
20	2	2	3	2	2	5	3	3	3	4	5	2	3	2	2	4	2	2	2	2	2	2	2	2	2	2	2	2	3	2	2	3	2	2	3	2	2	3	2	2	4	103	37				
21	1	2	5	2	6	6	2	2	4	2	2	2	2	2	2	4	4	2	2	2	2	2	2	2	2	2	2	2	5	1	2	3	1	2	2	2	4	2	3	2	2	103	42				
22	2	4	3	3	5	5	4	5	5	2	5	4	3	2	2	5	2	3	3	3	3	5	5	3	2	4	3	4	2	3	5	2	2	5	5	4	5	2	4	2	140	67					
23	1	1	1	4	1	2	1	4	2	1	5	2	1	1	1	3	2	3	3	2	5	1	1	6	2	2	6	6	1	2	5	1	2	1	1	2	1	1	5	2	94	38					
24	1	1	4	4	4	5	5	5	5	2	3	3	2	4	3	5	4	3	4	4	2	1	1	3	1	1	3	4	4	4	4	2	4	4	2	5	1	3	5	2	127	53					
25	1	5	6	4	6	4	2	2	5	5	1	5	1	2	2	5	3	5	2	3	2	1	2	2	1	2	2	4	2	2	1	2	2	1	4	5	2	1	5	2	114	54					
26	3	5	3	3	5	5	4	5	5	5	2	4	5	3	1	5	2	1	2	1	2	1	2	4	5	2	3	3	4	2	3	5	2	5	3	6	4	6	5	4	1	140	64				
27	2	4	5	4	5	5	4	5	5	4	2	3	2	2	3	4	3	3	2	3	1	4	5	4	2	3	2	6	3	3	4	2	4	3	5	5	6	4	4	3	143	67					
28	2	2	4	3	6	4	3	4	5	4	2	1	2	3	2	4	3	3	3	5	4	3	3	3	2	2	3	5	3	4	3	3	4	3	3	4	3	2	3	3	4	127	54				
29	4	3	3	2	4	5	5	2	4	4	2	2	2	2	2	5	3	3	3	2	2	2	4	3	3	2	3	4	2	3	4	2	3	4	2	3	2	2	4	2	3	4	2	118	48		
30	1	2	6	1	6	6	2	1	5	4	1	1	1	1	1	6	1	1	2	1	1	3	1	2	1	3	1	4	1	1	4	2	5	1	2	1	5	2	4	3	97	40					
31	2	2	4	2	4	4	5	2	5	3	2	4	5	3	3	4	2	2	4	3	5	2	2	3	2	2	3	2	3	4	2	3	4	3	3	6	1	2	1	2	2	2	120	41			
32	2	3	4	5	6	6	4	2	5	2	4	3	2	3	6	6	5	1	5	5	6	3	4	1	2	5	3	5	2	2	3	0	4	2	2	2	1	6	2	2	136	55					
33	2	2	4	4	6	6	4	4	5	4	5	5	0	2	5	3	3	4	3	1	2	5	2	2	3	3	2	2	4	5	3	2	2	4	5	3	2	6	6	6	2	6	3	144	71		
34	4	3	3	3	4	4	2	2	3	3	4	2	2	2	2	3	2	2	2	2	1	4	1	2	2	3	2	3	2	3	5	1	3	3	4	3	2	3	106	43							
35	2	3	5	3	5	5	5	5	4	4	2	5	2	3	5	4	2	4	5	5	4	5	5	4	5	5	4	4	3	3	5	3	4	5	4	5	3	4	4	5	4	5	3	160	71		
36	3	3	4	3	4	4	4	4	2	2	5	4	5	3	4	4	5	5	5	3	5	2	2	2	3	5	4	3	4	4	4	4	3	2	4	1	2	4	4	4	3	141	52				
37	1	2	5	5	5	4	4	2	4	3	5	4	5	2	2	4	2	2	2	2	1	1	6	5	1	4	2	3	3	2	1	1	4	2	2	4	2	2	2	3	116	44					
38	1	1	4	2	2	4	2	2	2	4	5	2	2	3	2	2	3	3	3	4	3	1	4	4	1	2	3	3	2	2	2	2	2	2	2	2	4	2	3	102	37						
39	6	4	5	3	4	4	4	4	4	5	5	3	3	3	3	2	3	3	3	3	3	6	6	4	3	2	3	3	3	4	3	2	3	1	6	6	3	6	1	2	143	64					
40	4	3	5	3	6	5	3	5	5	3	4	3	3	3	3	4	5	2	3	3	2	4	6	3	4	2	3	3	3	4	3	2	3	1	4	6	3	6	1	2	140	61					
41	4	6	5	4	6	6	5	6	6	4	2	3	4	6	3	4	3	4	4	4	2	4	5	4	3	4	4	4	4	4	4	4	5	4	4	4	4	5	6	2	5	2	168	78			
42	1	1	3	2	6	5	5	5	5	3	5	3	2	1	4	4	2	3	3	3	2	3	3	2	3	3	2	2	3	3	4	4	4	3	5	2	2	2	5	1	4	2	3	125	51		
43	2	1	3	2	3	5	4	3	4	5	2	2	1	2	2	5	2	1	1	1	2	3	3	1	3	2	2	4	2	2	4	3	3	3	2	2	1	3	1	3	100	34					
44	1	1	5	1	2	6	5	3	6	6	1	6	6	3	3	5	2	2	2	2	1	1	3	3	1	2	3	4	2	3	3	3	3	2	1	3	1	4	3	2	116	37					
45	1	1	5	4	4	3	2	5	2	5	4	0	2	2	2	4	3	4	3	3	5	4	2	4	4	3	3	5	3	4	4	4	2	1													

N	BUTIR																														Total	Total Valid											
	1	2	3	4	5	6	7	8	9	10	11	12	13	14	15	16	17	18	19	20	21	22	23	24	25	26	27	28	29	30													
89	4	2	3	3	5	6	3	4	5	4	2	2	2	0	3	4	2	3	4	4	3	5	5	2	2	3	3	4	3	3	3	2	5	2	3	3	3	3	3	2	127	58	
90	2	2	5	5	5	6	5	6	6	6	1	3	1	1	2	5	1	5	2	3	1	5	6	3	1	1	1	6	1	3	6	1	6	1	2	6	2	5	5	2	136	69	
91	5	4	4	3	4	5	4	4	5	5	3	2	2	3	2	4	3	3	3	2	4	2	3	3	2	2	3	4	3	3	4	2	5	1	2	4	3	3	3	2	128	52	
92	1	4	6	1	6	6	4	6	6	3	6	4	1	1	1	1	4	1	1	1	1	3	6	1	6	1	3	3	4	4	4	1	5	4	1	6	4	6	2	1	130	56	
93	2	6	6	3	6	6	5	3	6	6	1	3	4	4	3	5	4	4	4	1	1	6	6	3	4	3	2	3	1	3	5	2	6	4	6	3	6	4	6	2	158	74	
94	1	1	6	3	4	6	6	3	4	5	3	1	2	1	1	6	3	1	2	2	2	1	1	3	1	1	5	4	2	2	3	1	2	2	3	3	2	4	2	3	108	37	
95	1	2	5	2	6	5	4	5	6	4	4	3	2	2	3	4	1	1	3	1	1	3	6	3	3	3	3	5	3	3	5	4	2	1	4	6	2	1	2	2	126	57	
96	2	3	5	4	5	5	2	4	4	3	2	2	3	4	3	0	3	5	4	4	4	5	4	5	3	3	2	3	3	3	3	3	3	2	2	2	5	3	3	4	2	131	62

UJI VALIDITAS & RELIABILITAS

1. Variabel Aspirasi Karir

Putaran 1

***** Method 1 (space saver) will be used for this analysis *****

R E L I A B I L I T Y A N A L Y S I S - S C A L E (ALPHA)

		Mean	Std Dev	Cases
1.	Y_01	3,8750	1,1539	96,0
2.	Y_02	4,2708	1,3017	96,0
3.	Y_03	3,5625	1,1860	96,0
4.	Y_04	3,9167	1,5938	96,0
5.	Y_05	3,6771	1,3337	96,0
6.	Y_06	2,3125	1,3244	96,0
7.	Y_07	4,0521	1,1274	96,0
8.	Y_08	3,3438	1,3364	96,0
9.	Y_09	3,0208	1,3532	96,0
10.	Y_10	2,4896	1,0563	96,0
11.	Y_11	3,5000	,7814	96,0
12.	Y_12	4,0833	1,1758	96,0
13.	Y_13	4,1667	1,2621	96,0
14.	Y_14	2,4271	1,2544	96,0
15.	Y_15	4,4583	1,4720	96,0
16.	Y_16	4,5521	1,3678	96,0
17.	Y_17	4,0729	,6198	96,0
18.	Y_18	3,0417	1,3527	96,0
19.	Y_19	3,0208	1,6156	96,0
20.	Y_20	3,9271	1,2333	96,0
21.	Y_21	4,6563	1,3904	96,0
22.	Y_22	4,0729	1,5576	96,0
23.	Y_23	3,9271	1,2333	96,0
24.	Y_24	3,0208	1,1696	96,0
25.	Y_25	3,9167	,8905	96,0
26.	Y_26	4,1771	1,1607	96,0
27.	Y_27	3,5000	1,0362	96,0
28.	Y_28	3,2500	1,2978	96,0
29.	Y_29	3,1146	,8929	96,0
30.	Y_30	2,3125	1,3244	96,0

	Mean	Variance	Std Dev	N of Variables
Statistics for SCALE	107,7187	346,2253	18,6071	30

Item-total Statistics

	Scale Mean if Item Deleted	Scale Variance if Item Deleted	Corrected Item-Total Correlation	Alpha if Item Deleted
Y_01	103,8437	318,9753	,6288	,8882
Y_02	103,4479	308,8394	,7801	,8846

Y_03	104,1562	317,8174	,6385	,8880
Y_04	103,8021	304,6446	,7017	,8854
Y_05	104,0417	324,9456	,4056	,8924
Y_06	105,4062	321,2122	,4900	,8906
Y_07	103,6667	314,4982	,7617	,8859
Y_08	104,3750	325,1632	,4000	,8925
Y_09	104,6979	349,6236	-,1033	,9027
Y_10	105,2292	328,2838	,4396	,8917
Y_11	104,2187	330,3411	,5377	,8911
Y_12	103,6354	331,9815	,3002	,8942
Y_13	103,5521	322,7973	,4815	,8908
Y_14	105,2917	342,8193	,0394	,8992
Y_15	103,2604	303,6052	,7886	,8836
Y_16	103,1667	313,9719	,6268	,8877
Y_17	103,6458	353,8311	-,3427	,9000
Y_18	104,6771	349,4630	-,1002	,9026
Y_19	104,6979	335,8762	,1307	,8996
Y_20	103,7917	326,9877	,3972	,8925
Y_21	103,0625	324,0382	,4046	,8925
Y_22	103,6458	304,8838	,7154	,8851
Y_23	103,7917	326,9877	,3972	,8925
Y_24	104,6979	311,3499	,8118	,8848
Y_25	103,8021	331,3183	,4354	,8921
Y_26	103,5417	311,9140	,8040	,8850
Y_27	104,2187	331,3516	,3658	,8929
Y_28	104,4687	319,6832	,5356	,8897
Y_29	104,6042	332,6417	,3926	,8926
Y_30	105,4062	321,2122	,4900	,8906

Reliability Coefficients

N of Cases = 96,0

N of Items = 30

Alpha = ,8948

Putaran 2

***** Method 1 (space saver) will be used for this analysis *****

RELIABILITY ANALYSIS - SCALE (ALPHA)

		Mean	Std Dev	Cases
1.	Y_01	3,8750	1,1539	96,0
2.	Y_02	4,2708	1,3017	96,0
3.	Y_03	3,5625	1,1860	96,0
4.	Y_04	3,9167	1,5938	96,0
5.	Y_05	3,6771	1,3337	96,0
6.	Y_06	2,3125	1,3244	96,0
7.	Y_07	4,0521	1,1274	96,0
8.	Y_08	3,3438	1,3364	96,0
9.	Y_10	2,4896	1,0563	96,0
10.	Y_11	3,5000	,7814	96,0
11.	Y_12	4,0833	1,1758	96,0
12.	Y_13	4,1667	1,2621	96,0
13.	Y_15	4,4583	1,4720	96,0

14.	Y_16	4,5521	1,3678	96,0
15.	Y_20	3,9271	1,2333	96,0
16.	Y_21	4,6563	1,3904	96,0
17.	Y_22	4,0729	1,5576	96,0
18.	Y_23	3,9271	1,2333	96,0
19.	Y_24	3,0208	1,1696	96,0
20.	Y_25	3,9167	,8905	96,0
21.	Y_26	4,1771	1,1607	96,0
22.	Y_27	3,5000	1,0362	96,0
23.	Y_28	3,2500	1,2978	96,0
24.	Y_29	3,1146	,8929	96,0
25.	Y_30	2,3125	1,3244	96,0

Statistics for	Mean	Variance	Std Dev	N of
SCALE	92,1354	352,3078	18,7699	Variables 25

Item-total Statistics

	Scale Mean if Item Deleted	Scale Variance if Item Deleted	Corrected Item- Total Correlation	Alpha if Item Deleted
Y_01	88,2604	325,5420	,6108	,9243
Y_02	87,8646	316,0552	,7467	,9219
Y_03	88,5729	326,0367	,5805	,9247
Y_04	88,2187	305,6043	,7925	,9206
Y_05	88,4583	329,2825	,4389	,9270
Y_06	89,8229	325,7052	,5198	,9257
Y_07	88,0833	320,3719	,7598	,9222
Y_08	88,7917	330,7140	,4075	,9276
Y_10	89,6458	334,0838	,4431	,9266
Y_11	88,6354	334,3604	,6067	,9252
Y_12	88,0521	337,8394	,3028	,9288
Y_13	87,9687	328,3464	,4890	,9261
Y_15	87,6771	307,9473	,8167	,9203
Y_16	87,5833	315,1509	,7266	,9221
Y_20	88,2083	332,8825	,3979	,9275
Y_21	87,4792	328,3364	,4374	,9272
Y_22	88,0625	305,8276	,8086	,9203
Y_23	88,2083	332,8825	,3979	,9275
Y_24	89,1146	318,2709	,7828	,9217
Y_25	88,2187	337,8569	,4172	,9270
Y_26	87,9583	316,9456	,8230	,9211
Y_27	88,6354	339,9815	,2945	,9285
Y_28	88,8854	324,4815	,5591	,9250
Y_29	89,0208	341,3890	,3068	,9282
Y_30	89,8229	325,7052	,5198	,9257

Reliability Coefficients

N of Cases = 96,0

N of Items = 25

Alpha = ,9278

Putaran 3

***** Method 1 (space saver) will be used for this analysis *****

RELIABILITY ANALYSIS - SCALE (ALPHA)

		Mean	Std Dev	Cases
1.	Y_01	3,8750	1,1539	96,0
2.	Y_02	4,2708	1,3017	96,0
3.	Y_03	3,5625	1,1860	96,0
4.	Y_04	3,9167	1,5938	96,0
5.	Y_05	3,6771	1,3337	96,0
6.	Y_06	2,3125	1,3244	96,0
7.	Y_07	4,0521	1,1274	96,0
8.	Y_08	3,3438	1,3364	96,0
9.	Y_10	2,4896	1,0563	96,0
10.	Y_11	3,5000	,7814	96,0
11.	Y_12	4,0833	1,1758	96,0
12.	Y_13	4,1667	1,2621	96,0
13.	Y_15	4,4583	1,4720	96,0
14.	Y_16	4,5521	1,3678	96,0
15.	Y_20	3,9271	1,2333	96,0
16.	Y_21	4,6563	1,3904	96,0
17.	Y_22	4,0729	1,5576	96,0
18.	Y_23	3,9271	1,2333	96,0
19.	Y_24	3,0208	1,1696	96,0
20.	Y_25	3,9167	,8905	96,0
21.	Y_26	4,1771	1,1607	96,0
22.	Y_28	3,2500	1,2978	96,0
23.	Y_29	3,1146	,8929	96,0
24.	Y_30	2,3125	1,3244	96,0

Statistics for	Mean	Variance	Std Dev	N of Variables
SCALE	88,6354	339,9815	18,4386	24

Item-total Statistics

	Scale Mean if Item Deleted	Scale Variance if Item Deleted	Corrected Item-Total Correlation	Alpha if Item Deleted
Y_01	84,7604	314,9209	,5794	,9256
Y_02	84,3646	305,1604	,7284	,9230
Y_03	85,0729	313,9841	,5851	,9255
Y_04	84,7187	293,0043	,8144	,9209
Y_05	84,9583	318,5877	,4120	,9284
Y_06	86,3229	313,2525	,5327	,9263
Y_07	84,5833	308,5193	,7623	,9229
Y_08	85,2917	318,6509	,4097	,9285
Y_10	86,1458	321,8311	,4495	,9274
Y_11	85,1354	322,7499	,5920	,9261
Y_12	84,5521	326,8394	,2766	,9301
Y_13	84,4687	316,3990	,4897	,9270

Y_15	84,1771	295,8104	,8296	,9208
Y_16	84,0833	303,7614	,7204	,9230
Y_20	84,7083	320,8193	,3993	,9284
Y_21	83,9792	314,6101	,4752	,9274
Y_22	84,5625	293,7224	,8210	,9208
Y_23	84,7083	320,8193	,3993	,9284
Y_24	85,6146	305,9657	,7979	,9222
Y_25	84,7187	326,0359	,4090	,9279
Y_26	84,4583	306,0825	,8015	,9222
Y_28	85,3854	312,1973	,5691	,9257
Y_29	85,5208	330,0627	,2811	,9294
Y_30	86,3229	313,2525	,5327	,9263

Reliability Coefficients

N of Cases = 96,0

N of Items = 24

Alpha = ,9285

Putaran 4

***** Method 1 (space saver) will be used for this analysis *****

RELIABILITY ANALYSIS - SCALE (ALPHA)

		Mean	Std Dev	Cases
1.	Y_01	3,8750	1,1539	96,0
2.	Y_02	4,2708	1,3017	96,0
3.	Y_03	3,5625	1,1860	96,0
4.	Y_04	3,9167	1,5938	96,0
5.	Y_05	3,6771	1,3337	96,0
6.	Y_06	2,3125	1,3244	96,0
7.	Y_07	4,0521	1,1274	96,0
8.	Y_08	3,3438	1,3364	96,0
9.	Y_10	2,4896	1,0563	96,0
10.	Y_11	3,5000	,7814	96,0
11.	Y_13	4,1667	1,2621	96,0
12.	Y_15	4,4583	1,4720	96,0
13.	Y_16	4,5521	1,3678	96,0
14.	Y_20	3,9271	1,2333	96,0
15.	Y_21	4,6563	1,3904	96,0
16.	Y_22	4,0729	1,5576	96,0
17.	Y_23	3,9271	1,2333	96,0
18.	Y_24	3,0208	1,1696	96,0
19.	Y_25	3,9167	,8905	96,0
20.	Y_26	4,1771	1,1607	96,0
21.	Y_28	3,2500	1,2978	96,0
22.	Y_30	2,3125	1,3244	96,0

Statistics for	Mean	Variance	Std Dev	N of Variables
SCALE	81,4375	317,4066	17,8159	22

Item-total Statistics

	Scale Mean if Item Deleted	Scale Variance if Item Deleted	Corrected Item- Total Correlation	Alpha if Item Deleted
Y_01	77,5625	294,6487	,5409	,9291
Y_02	77,1667	285,2351	,6932	,9264
Y_03	77,8750	292,8263	,5709	,9286
Y_04	77,5208	270,9259	,8375	,9232
Y_05	77,7604	298,9841	,3608	,9324
Y_06	79,1250	290,4684	,5579	,9289
Y_07	77,3854	286,9130	,7652	,9256
Y_08	78,0938	296,3806	,4181	,9314
Y_10	78,9479	299,2499	,4663	,9302
Y_11	77,9375	301,9750	,5458	,9295
Y_13	77,2708	294,5785	,4901	,9300
Y_15	76,9792	274,2732	,8403	,9233
Y_16	76,8854	282,0183	,7296	,9257
Y_20	77,5104	298,4841	,4084	,9313
Y_21	76,7813	291,1622	,5124	,9298
Y_22	77,3646	272,1709	,8330	,9233
Y_23	77,5104	298,4841	,4084	,9313
Y_24	78,4167	284,4982	,7994	,9249
Y_25	77,5208	304,1259	,4021	,9310
Y_26	77,2604	285,4578	,7802	,9252
Y_28	78,1875	290,0697	,5803	,9284
Y_30	79,1250	290,4684	,5579	,9289

Reliability Coefficients

N of Cases = 96,0

N of Items = 22

Alpha = ,9312

2. Variabel Cinderella Complex Putaran 1

***** Method 1 (space saver) will be used for this analysis *****

RELIABILITY ANALYSIS - SCALE (ALPHA)

Item-total Statistics

	Scale Mean if Item Deleted	Scale Variance if Item Deleted	Corrected Item- Total Correlation	Alpha if Item Deleted
X1	123.0417	291.3035	.2038	.8072
X2	122.7813	280.1516	.4283	.7988
X3	121.2604	292.7420	.2072	.8067
X4	122.4479	285.1552	.3711	.8012
X5	120.8438	280.7227	.4722	.7977
X6	120.5104	297.9999	.1119	.8090
X7	122.2188	289.6885	.2813	.8043
X8	121.7813	278.9937	.5248	.7960
X9	121.0208	287.1996	.4222	.8006
X10	122.0104	301.2946	.0095	.8131
X11	122.5417	303.5351	-.0420	.8155
X12	122.7500	293.9579	.1976	.8068
X13	123.1354	291.6552	.2408	.8055
X14	123.3438	294.3122	.1886	.8071
X15	123.1250	293.2263	.2871	.8045
X16	121.3125	298.1539	.0893	.8102
X17	122.7292	292.1996	.2254	.8060
X18	122.4896	282.5473	.4371	.7990
X19	122.3333	281.9930	.4872	.7978
X20	122.4375	283.2382	.4504	.7989
X21	123.0313	294.4937	.1628	.8082
X22	122.9271	283.4788	.4076	.7999
X23	121.8125	279.0171	.4306	.7985
X24	122.6354	289.4762	.3009	.8037
X25	123.2708	295.3154	.1692	.8076
X26	123.0000	295.1158	.2035	.8065
X27	122.8646	297.7815	.1286	.8084
X28	121.6146	291.7762	.2774	.8045
X29	122.8750	292.5947	.3017	.8041
X30	122.4479	287.5973	.4980	.7997
X31	122.0625	284.0803	.4522	.7991
X32	123.0000	294.3579	.2026	.8066
X33	122.6771	292.6420	.1789	.8080
X34	123.1146	289.9341	.2746	.8045
X35	122.5208	281.8101	.3513	.8017
X36	121.8646	285.7394	.3499	.8019
X37	122.4063	281.7385	.3343	.8024
X38	122.5313	291.9780	.1819	.8081
X39	121.9896	280.3052	.4303	.7987
X40	122.9583	305.3456	-.0828	.8138

Reliability Coefficients

N of Cases = 96.0

N of Items = 40

Alpha = .8083

Putaran 2

***** Method 1 (space saver) will be used for this analysis *****

RELIABILITY ANALYSIS - SCALE (ALPHA)

Item-total Statistics

	Scale Mean if Item Deleted	Scale Variance if Item Deleted	Corrected Item- Total Correlation	Alpha if Item Deleted
X2	57.1354	122.9815	.4901	.8115
X4	56.8021	128.1394	.3775	.8180
X5	55.1979	124.3288	.5103	.8107
X8	56.1354	123.9499	.5371	.8093
X9	55.3750	130.0895	.4130	.8166
X18	56.8438	125.9016	.4626	.8134
X19	56.6875	128.0066	.4227	.8157
X20	56.7917	127.4298	.4390	.8148
X22	57.2813	128.0569	.3780	.8180
X23	56.1667	123.8877	.4369	.8149
X24	56.9896	131.2525	.3016	.8218
X29	57.2292	134.8732	.2402	.8238
X30	56.8021	132.0341	.4069	.8176
X31	56.4167	128.3298	.4284	.8155
X35	56.8750	123.1211	.4313	.8155
X36	56.2188	128.0043	.3734	.8183
X37	56.7604	124.6262	.3651	.8204
X39	56.3438	124.6911	.4405	.8146

Reliability Coefficients

N of Cases = 96.0

N of Items = 18

Alpha = .8246

Putaran 3

***** Method 1 (space saver) will be used for this analysis *****

R E L I A B I L I T Y A N A L Y S I S - S C A L E (ALPHA)

Item-total Statistics

	Scale Mean if Item Deleted	Scale Variance if Item Deleted	Corrected Item- Total Correlation	Alpha if Item Deleted
X2	54.4792	116.7996	.4997	.8098
X4	54.1458	121.9575	.3835	.8169
X5	52.5417	118.4193	.5100	.8095
X8	53.4792	118.7154	.5118	.8096
X9	52.7188	124.1201	.4095	.8159
X18	54.1875	120.1539	.4549	.8128
X19	54.0313	122.2201	.4142	.8152
X20	54.1354	122.0973	.4136	.8152
X22	54.6250	121.8368	.3854	.8168
X23	53.5104	117.6630	.4466	.8133
X24	54.3333	125.0667	.3055	.8209
X30	54.1458	126.8206	.3620	.8185
X31	53.7604	122.2683	.4304	.8145
X35	54.2188	116.6148	.4496	.8133
X36	53.5625	122.2276	.3651	.8180
X37	54.1042	118.0732	.3825	.8185
X39	53.6875	118.3434	.4542	.8127

Reliability Coefficients

N of Cases = 96.0

N of Items = 17

Alpha = .8238

UJI NORMALITAS DATA

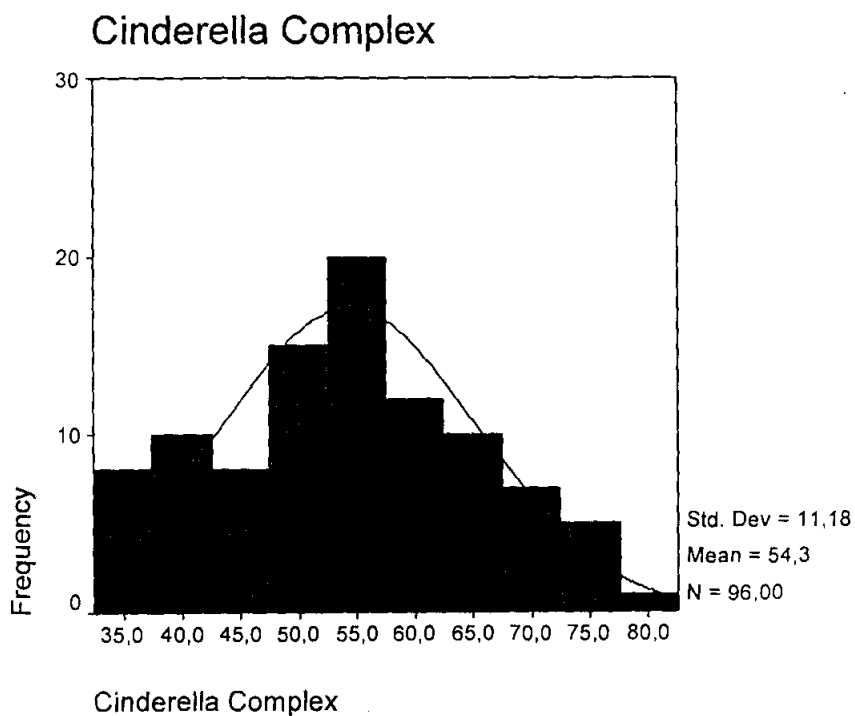
One-Sample Kolmogorov-Smirnov Test

		Cinderella Complex	Aspirasi Karir
N		96	96
Normal Parameters ^{a,b}	Mean	54,3333	81,4375
	Std. Deviation	11,1833	17,8159
Most Extreme Differences	Absolute	,062	,116
	Positive	,062	,081
	Negative	-,049	-,116
Kolmogorov-Smirnov Z		,606	1,137
Asymp. Sig. (2-tailed)		,856	,151

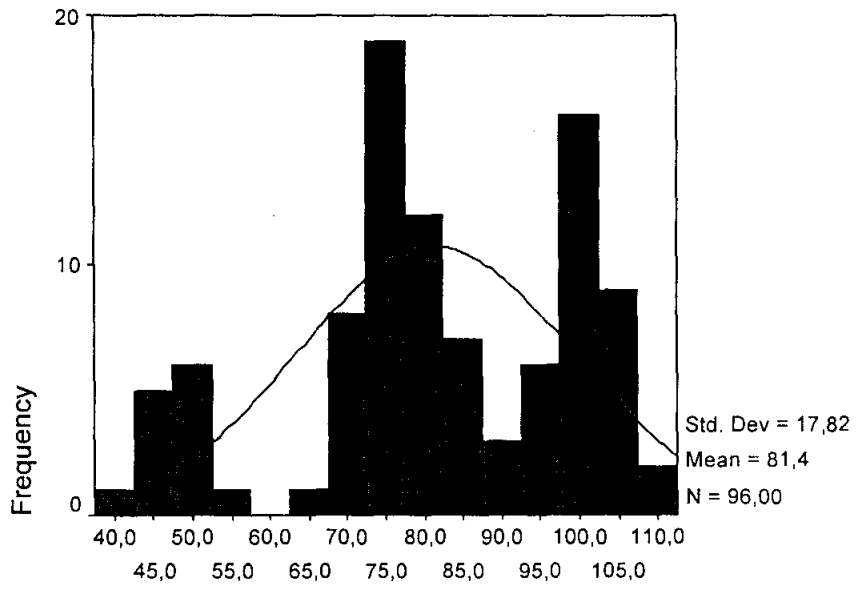
a. Test distribution is Normal.

b. Calculated from data.

HISTOGRAM



Aspirasi Karir



Aspirasi Karir

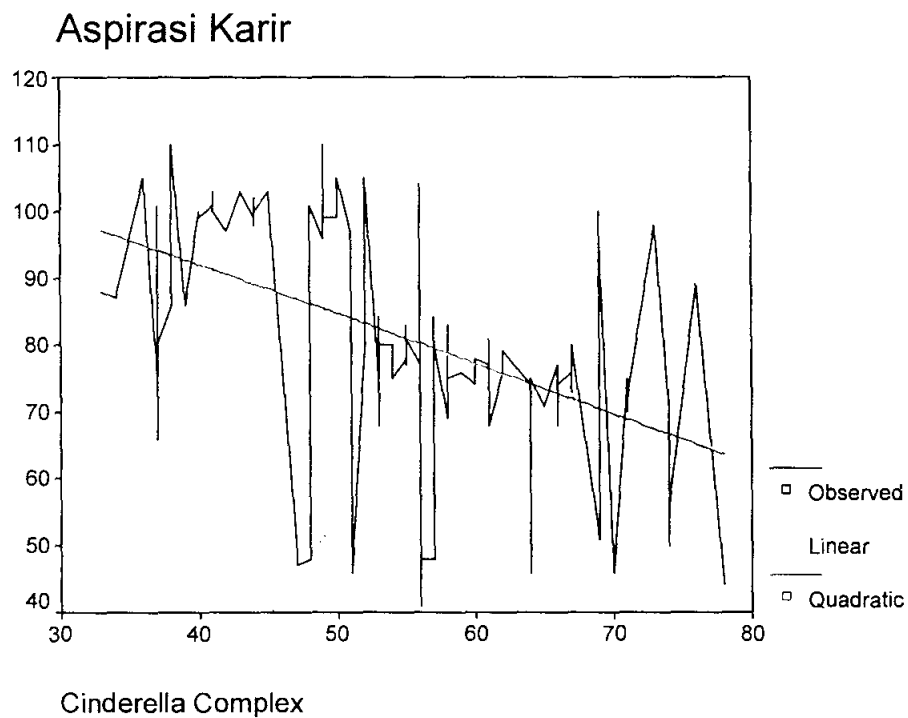
UJI LINIERITAS HUBUNGAN

Curve Fit

MODEL: MOD_1.

Independent: X

Dependent	Mth	Rsqr	d.f.	F	Sigf	b0	b1	b2
Y	LIN	,218	94	26,28	,000	121,895	-,7446	
Y	QUA	,218	93	13,00	,000	120,206	-,6801	-,0006



ANOVA Table

			Sum of Squares	df	Mean Square	F	Sig.
Aspirasi Karir * Cinderella Complex	Between Groups	(Combined) Linearity	18974,425	38	499,327	2,546	,001
		Deviation from Linearity	6587,595	1	6587,595	33,589	,000
			8497,551	37	229,664	1,171	,053
	Within Groups		11179,200	57	196,126		
	Total		30153,625	95			

CORRELATIONS

Descriptive Statistics

	Mean	Std. Deviation	N
Cinderella Complex	54,3333	11,1833	96
Aspirasi Karir	81,4375	17,8159	96

Correlations

		Cinderella Complex	Aspirasi Karir
Cinderella Complex	Pearson Correlation	1,000	-,467**
	Sig. (2-tailed)	,	,000
	N	96	96
Aspirasi Karir	Pearson Correlation	-,467**	1,000
	Sig. (2-tailed)	,000	,
	N	96	96

** . Correlation is significant at the 0.01 level (2-tailed).

FREQUENCY TABLE

Cinderella Complex

		Frequency	Percent	Valid Percent	Cumulative Percent
Valid	Sangat rendah	1	1,0	1,0	1,0
	Rendah	33	34,4	34,4	35,4
	Sedang	49	51,0	51,0	86,5
	Tinggi	13	13,5	13,5	100,0
	Total	96	100,0	100,0	

Aspirasi Karir

		Frequency	Percent	Valid Percent	Cumulative Percent
Valid	Sangat rendah	1	1,0	1,0	1,0
	Rendah	12	12,5	12,5	13,5
	Sedang	47	49,0	49,0	62,5
	Tinggi	34	35,4	35,4	97,9
	Sangat tinggi	2	2,1	2,1	100,0
	Total	96	100,0	100,0	

MEAN_{IDEAL} DAN SD_{IDEAL}

Rumus Mean_{ideal} = Rumus SD_{ideal} =

$$\frac{(n_t \times j_b) + (n_r \times j_b)}{2}$$

$$\frac{(n_t \times j_b) - (n_r \times j_b)}{6}$$

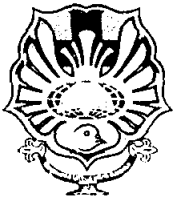
Variabel	INPUT			OUTPUT					
				Mean _{ideal}	SD _{ideal}	Batas-batas			
Cinderella Complex	n _t	=	6	59,50	14,17	ST/SB	X ≥	85,00	
	n _r	=	1			T/B	68,00	≤ X <	85,00
	j _b	=	17			S/C	51,00	≤ X <	68,00
						R/TB	34,00	≤ X <	51,00
						SR/STB	X <	34,00	

Variabel	INPUT			OUTPUT					
				Mean _{ideal}	SD _{ideal}	Batas-batas			
Aspirasi Karir	n _t	=	6	77,00	18,33	ST/SB	X ≥	110,00	
	n _r	=	1			T/B	88,00	≤ X <	110,00
	j _b	=	22			S/C	66,00	≤ X <	88,00
						R/TB	44,00	≤ X <	66,00
						SR/STB	X <	44,00	

Penggolongan responden ke dalam 5 kelas: (5) sangat tinggi/sangat baik (ST/SB), (4) tinggi/baik (T/B), (3) sedang (C), (2) rendah/tidak baik (R/TB), dan (1) sangat rendah/sangat tidak baik (SR/STB).

Penggolongan menjadi lima kelas ini menggunakan standar seperti di bawah ini:

- ST/SB = $X \geq (\text{Mean}_{\text{ideal}} + 1,8\text{SD}_{\text{ideal}})$
- T/B = $(\text{Mean}_{\text{ideal}} + 0,6\text{SD}_{\text{ideal}}) \leq X < (\text{Mean}_{\text{ideal}} + 1,8\text{SD}_{\text{ideal}})$
- S = $(\text{Mean}_{\text{ideal}} - 0,6 \text{SD}_{\text{ideal}}) \leq X < (\text{Mean}_{\text{ideal}} + 0,6 \text{SD}_{\text{ideal}})$
- R/TB = $(\text{Mean}_{\text{ideal}} - 1,8 \text{SD}_{\text{ideal}}) \leq X < (\text{Mean}_{\text{ideal}} - 0,6 \text{SD}_{\text{ideal}})$
- SR/STB = $X < (\text{Mean}_{\text{ideal}} - 1,8 \text{SD}_{\text{ideal}})$



YAYASAN WIDYA MANDALA SURABAYA
UNIVERSITAS KATOLIK WIDYA MANDALA SURABAYA
FAKULTAS PSIKOLOGI

Jl. Dinoyo 42 - 44, Telp. 5678478 (hunting) Ext. 161, Fax. 5610818 Surabaya - 60265

Nomor : 0838 /WM07/T/2006
Hal : **Ijin Penyebaran Angket**

07 Juli 2006

Kepada : Yth. **Rektor**
Unika Widya Mandala
Surabaya


Dengan hormat kami beritahukan bahwa mahasiswa tersebut di bawah ini :

Nama : Irtan Maria Halim
Fakultas : Psikologi
Nomor pokok : 7103002058

adalah mahasiswa kami yang sedang menyusun skripsi dengan judul "**Aspirasi Karir dan Cinderella Complex Pada Mahasiswi Fakultas Psikologi Universitas Katolik Widya Mandala Surabaya**".

Sehubungan dengan hal tersebut kami mohon ijin dan bantuan bagi mahasiswa yang bersangkutan agar dapat melakukan penyebaran angket di Fakultas Psikologi Unika Widya Mandala.

Atas bantuan dan kerjasama yang baik, kami ucapkan terima kasih.

Dekan,

Y. Yettie Wandansari, M.Si.
NIK. 711.98.0337

Tembusan :
Yth. Mahasiswa ybs



YAYASAN WIDYA MANDALA SURABAYA
UNIVERSITAS KATOLIK WIDYA MANDALA SURABAYA
FAKULTAS PSIKOLOGI

Jl. Dinoyo 42 - 44, Telp. 5678478 (hunting) Ext. 161, Fax. 5610818 Surabaya - 60265

Nomor : 0839 /WM07/T/2006
Hal : **Ijin Penelitian**

07 Juli 2006

Kepada : Yth. **Rektor**
Unika Widya Mandala
Surabaya

Dengan hormat kami beritahukan bahwa mahasiswa tersebut di bawah ini :

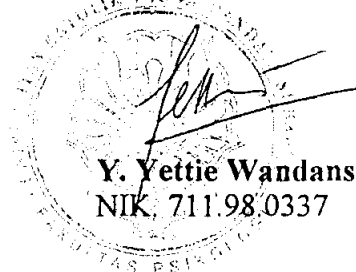
Nama : Intan Maria Halim
Fakultas : Psikologi
Nomor pokok : 7103002058

adalah mahasiswa kami yang sedang menyusun skripsi dengan judul "**Aspirasi Karir dan *Cinderella Complex* Pada Mahasiswi Fakultas Psikologi Universitas Katolik Widya Mandala Surabaya**".

Sehubungan dengan hal tersebut kami mohon ijin dan bantuan bagi mahasiswa yang bersangkutan agar dapat melakukan penelitian pada mahasiswa Fakultas Psikologi Unika Widya Mandala.

Atas bantuan dan kerjasama yang baik, kami ucapkan terima kasih.

Dekan,



Y. Yettie Wandansari, M.Si.
NIK. 711.98.0337

Ternbusan :
Yth. Mahasiswa ybs



YAYASAN WIDYA MANDALA SURABAYA
UNIVERSITAS KATOLIK WIDYA MANDALA SURABAYA

Jl. Dinoyo 42-44 Telp. (031) 5678478, 5682211 Fax. 5610818 Surabaya 60265

Website : <http://www.wima.ac.id> Email : info@wima.ac.id

Nomor : 1312/WM01/Q/2006 14 Juli 2006
Lampiran : ---
Perihal : Ijin Penyebaran Angket & Penelitian


Kepada : Yth. Dekan
Fakultas Psikologi
Universitas Katolik Widya Mandala
Surabaya

Menunjuk surat Saudara No.0838/WM07/T/2006 dan No.0839/ WM07/ T/ 2006 tertanggal 07 Juli 2006 perihal Ijin Penyebaran Angket & Penelitian atas nama mahasiswa :

Nama : Intan Maria Halim
Nomor Pokok : 7103002058

untuk menyusun skripsi dengan judul "**Aspirasi Karir dan *Cinderella Complex* Pada Mahasiswi Fakultas Psikologi Universitas Katolik Widya Mandala Surabaya**", dengan hormat diberitahukan bahwa ijin tersebut dapat disetujui.

Atas perhatian Saudara kami sampaikan terima kasih.

14 Juli 2006
Rektor
Wakil Rektor I,


Drs. Kuncoro Foe, G.Dip.Sc., Ph.D.
NIK. 241.90.0176



YAYASAN WIDYA MANDALA SURABAYA
UNIVERSITAS KATOLIK WIDYA MANDALA SURABAYA
FAKULTAS PSIKOLOGI

Jl. Dinoyo 42 - 44, Telp. 5678478 (hunting) Ext. 161, Fax. 5610818 Surabaya - 60265

Nomor : 1280/WM07/T/2006
Lampiran : 1 (satu) berkas
Hal : **Laporan Pengambilan Data Skripsi**

30 September 2006

Kepada : **Yth. Rektor**
Unika Widya Mandala
Surabaya

Dengan hormat kami sampaikan bahwa mahasiswa kami :

Nama : Intan Maria Halim
Nomor pokok : 7103002058
Semester : 9

telah selesai melakukan penyebaran angket untuk penelitian skripsi dengan judul "**Aspirasi Karir dan Cinderella Complex Pada Mahasiswi Fakultas Psikologi Universitas Katolik Widya Mandala Surabaya**" dengan subjek penelitian mahasiswa Fakultas Psikologi Unika Widya Mandala Surabaya. Bersama surat ini kami lampirkan surat permohonan ijin penelitian dan penyebaran angket, kesimpulan dan angket dari penelitian yang bersangkutan.

Atas perhatian dan kerjasama Bapak, kami ucapkan terima kasih.



PERPUSTAKAAN
Universitas Katolik Widya Mandala
SURABAYA