

LAMPIRAN

Tabulating Skala Kedekatan Hubungan Antar Pribadi

Aitem	1	2	3	4	5	6	7	8	9	10	11	12	13	14	15	16	17	18	19	20	21	22	23	24	Skor Total
Subjek																									
1	2	2	3	2	1	3	2	2	1	3	2	3	1	2	3	3	1	4	2	3	1	2	1	1	50
2	4	4	2	3	3	2	3	3	3	3	3	3	3	3	3	3	2	3	3	3	3	3	2	3	70
3	3	3	2	3	2	3	3	3	3	3	2	2	3	3	3	3	2	3	2	3	3	3	3	3	66
4	3	3	2	3	3	3	3	3	3	3	3	3	4	3	3	3	4	3	2	3	3	3	3	3	72
5	1	3	1	3	3	2	1	3	3	4	2	3	2	4	3	3	2	3	1	3	3	2	3	3	61
6	3	3	2	3	3	3	2	3	3	3	3	3	3	3	3	3	2	3	2	3	3	3	2	3	67
7	3	3	2	3	3	3	3	2	1	3	2	4	3	3	3	3	2	2	3	3	3	3	2	3	65
8	3	2	2	2	3	4	3	2	2	2	2	2	3	3	3	2	3	3	3	3	2	2	3	2	61
9	4	1	3	3	3	2	3	3	3	3	3	3	3	3	3	2	3	2	3	3	3	3	3	3	68
10	4	4	3	3	2	3	3	3	4	4	3	3	4	4	4	4	2	2	3	4	4	3	3	3	79
11	1	3	3	3	2	3	1	2	3	3	1	3	3	1	3	3	2	3	3	3	3	3	2	3	60
12	2	2	4	2	2	2	4	3	3	3	3	4	3	1	3	4	2	4	3	4	3	4	2	4	71
13	4	3	2	3	3	2	3	3	3	3	2	3	3	3	2	3	2	3	3	3	3	3	3	3	68
14	4	4	4	4	4	1	4	4	1	4	3	4	4	4	4	4	4	3	4	4	4	4	3	4	87
15	4	4	4	4	4	1	4	4	4	4	3	4	4	4	4	4	4	3	4	4	4	4	3	4	57
16	2	3	2	3	3	4	2	1	2	3	2	3	2	3	2	4	1	3	1	3	2	4	1	1	90
17	3	3	3	2	3	3	2	3	3	3	3	3	2	3	3	3	3	2	2	3	2	2	3	3	65
18	4	2	3	3	2	3	3	3	3	4	3	4	3	4	4	4	4	2	2	4	4	4	3	2	77
20	3	3	3	4	3	3	2	4	4	3	3	3	3	4	4	3	3	3	3	4	4	3	3	4	79
22	3	3	4	4	2	2	3	2	3	4	3	4	2	4	3	4	3	4	3	4	3	4	3	4	78
23	3	3	2	2	3	3	3	3	3	3	2	3	3	3	3	3	2	3	3	3	3	3	3	3	68
24	3	3	2	2	2	4	3	2	3	4	2	2	2	3	3	2	2	2	3	3	2	2	3	2	61
26	4	4	2	4	4	4	4	4	2	4	3	2	3	3	3	4	3	3	4	4	4	4	3	2	81
27	3	3	2	3	4	3	3	4	4	4	3	3	3	3	4	4	3	3	3	3	3	3	3	3	77
28	4	4	2	3	2	3	4	4	3	4	3	4	4	4	3	4	3	4	4	4	3	3	3	4	83
29	3	3	2	3	2	2	2	4	3	3	2	4	3	4	3	3	3	3	3	4	3	3	3	4	72
30	3	3	3	3	2	3	3	3	3	3	3	3	3	3	3	3	3	3	3	4	3	3	3	4	73
33	4	4	4	4	3	2	4	4	4	4	4	3	4	4	4	4	3	3	4	4	4	4	4	4	90
34	2	2	2	2	2	2	2	2	4	3	2	2	3	3	4	3	3	4	3	1	3	2	2	2	60

35	3	4	3	2	3	4	4	3	2	3	3	3	3	2	3	3	3	3	3	2	59
36	3	3	2	3	3	4	4	3	3	3	3	3	3	2	3	4	4	3	3	3	62
37	4	4	2	3	3	4	3	3	3	3	3	3	2	2	4	4	3	3	3	3	62
38	4	4	4	3	1	4	4	2	3	4	4	3	4	4	4	3	3	3	3	3	67
39	1	2	3	4	3	4	2	2	2	3	3	3	2	3	2	3	3	2	3	3	53
42	3	2	2	3	3	3	3	3	3	3	3	3	3	2	3	3	3	3	3	3	57
43	2	2	4	1	2	3	2	2	3	3	3	3	1	4	3	4	4	3	3	2	54
44	4	3	4	4	4	4	4	4	3	4	4	4	3	3	4	4	3	3	4	1	71
46	3	4	2	3	4	3	3	2	4	3	2	2	3	1	3	3	3	3	2	4	57
50	4	4	4	4	4	4	4	4	4	4	4	4	4	4	4	4	4	4	4	4	80
52	3	3	3	3	3	3	4	2	3	2	3	3	3	2	3	3	3	3	3	2	57
53	4	3	3	4	3	3	3	3	4	3	4	3	4	4	4	4	4	4	4	4	72
54	3	4	3	2	3	4	2	4	3	3	4	4	3	4	1	4	4	3	3	4	65
55	4	2	4	4	3	4	4	4	4	3	3	3	4	3	4	4	4	4	4	4	73
56	3	2	3	2	3	2	3	2	2	3	3	2	3	3	2	3	2	3	3	2	51
57	2	3	2	3	2	2	3	2	2	2	2	2	2	3	2	2	2	2	2	2	44
59	3	2	1	3	2	2	4	3	1	2	2	3	2	4	3	2	3	2	2	2	48
60	4	4	4	4	4	4	4	4	2	4	4	3	4	3	4	4	3	4	3	3	73

Kedekatan Hubungan Antar Pribadi

***** Method 1 (space saver) will be used for this analysis *****

RELIABILITY ANALYSIS - SCALE (ALPHA)

Item-total Statistics

	Scale Mean if Item Deleted	Scale Variance if Item Deleted	Corrected Item- Total Correlation	Alpha if Item Deleted
NO.1	68.2340	88.3571	.6755	.8869
NO.2	68.3191	92.2655	.4724	.8923
NO.3	68.6170	91.0241	.4961	.8918
NO.4	68.3404	91.0990	.5877	.8896
NO.5	68.7447	94.3247	.2941	.8972
NO.6	68.7660	108.7049	-.5246	.9164
NO.7	68.4681	90.4718	.5708	.8898
NO.8	68.2128	88.5624	.7001	.8865
NO.9	68.3617	94.1924	.3425	.8954
NO.10	68.0000	94.3913	.4298	.8932
NO.11	68.6383	90.0185	.7002	.8872
NO.12	68.3191	93.1785	.4284	.8933
NO.13	68.3617	90.4098	.7190	.8871
NO.14	68.1702	90.7095	.6078	.8891
NO.15	68.2128	93.6929	.5453	.8913
NO.16	68.1702	91.0574	.5827	.8897
NO.17	68.6170	92.3719	.4274	.8935
NO.18	68.4894	98.7336	.0712	.9002
NO.19	68.3830	89.6327	.6196	.8885
NO.20	67.9787	90.6735	.6998	.8876
NO.21	68.2340	90.2701	.7033	.8873
NO.22	68.2766	90.6827	.6998	.8876
NO.23	68.5106	91.2118	.6596	.8884
NO.24	68.4043	90.2895	.5300	.8909

Reliability Coefficients

N of Cases = 47.0

N of Items = 24

Alpha = .8960

Kedekatan Hubungan Antar Pribadi

***** Method 1 (space saver) will be used for this analysis *****

RELIABILITY ANALYSIS - SCALE (ALPHA)

Item-total Statistics

	Scale Mean if Item Deleted	Scale Variance if Item Deleted	Corrected Item- Total Correlation	Alpha if Item Deleted
NO.1	60.2128	89.3016	.6749	.9174
NO.2	60.2979	93.5180	.4523	.9222
NO.3	60.5957	91.5504	.5225	.9210
NO.4	60.3191	92.0916	.5846	.9194
NO.7	60.4468	91.9482	.5356	.9205
NO.8	60.1915	89.2451	.7173	.9165
NO.9	60.3404	94.5772	.3812	.9237
NO.10	59.9787	95.1082	.4505	.9219
NO.11	60.6170	90.9371	.7020	.9172
NO.12	60.2979	94.0398	.4353	.9224
NO.13	60.3404	91.2729	.7256	.9170
NO.14	60.1489	91.6078	.6113	.9189
NO.15	60.1915	94.6364	.5469	.9204
NO.16	60.1489	92.1730	.5707	.9197
NO.17	60.5957	92.9417	.4518	.9225
NO.19	60.3617	90.5837	.6190	.9187
NO.20	59.9574	91.6503	.6972	.9175
NO.21	60.2128	90.9537	.7239	.9169
NO.22	60.2553	91.8464	.6821	.9178
NO.23	60.4894	91.9510	.6766	.9179
NO.24	60.3830	91.0241	.5429	.9206

Reliability Coefficients

N of Cases = 47.0

N of Items = 21

Alpha = .9231

Kedekatan Hubungan Antar Pribadi

***** Method 1 (space saver) will be used for this analysis *****

RELIABILITY ANALYSIS - SCALE (ALPHA)

Item-total Statistics

	Scale Mean if Item Deleted	Scale Variance if Item Deleted	Corrected Item- Total Correlation	Alpha if Item Deleted
NO.1	57.2340	83.0527	.6830	.9178
NO.2	57.3191	87.1351	.4597	.9228
NO.3	57.6170	85.3284	.5232	.9217
NO.4	57.3404	85.7512	.5933	.9199
NO.7	57.4681	85.3848	.5590	.9207
NO.8	57.2128	83.3451	.7014	.9174
NO.10	57.0000	88.8261	.4467	.9226
NO.11	57.6383	84.8881	.6915	.9179
NO.12	57.3191	87.5264	.4511	.9229
NO.13	57.3617	85.1489	.7199	.9176
NO.14	57.1702	85.4921	.6044	.9196
NO.15	57.2128	88.5624	.5247	.9214
NO.16	57.1702	85.8400	.5786	.9202
NO.17	57.6170	86.8067	.4436	.9235
NO.19	57.3830	84.3284	.6246	.9192
NO.20	56.9787	85.3256	.7074	.9178
NO.21	57.2340	84.9658	.7081	.9177
NO.22	57.2766	85.4218	.7000	.9179
NO.23	57.5106	85.9510	.6584	.9188
NO.24	57.4043	84.8982	.5386	.9214

Reliability Coefficients

N of Cases = 47.0

N of Items = 20

Alpha = .9237

Tabulating Skala Kedekatan Hubungan Antar Pribadi (Aitem Valid)

Aitem	1	2	3	4	7	8	10	11	12	13	14	15	16	17	19	20	21	22	23	24	Skor Total
1	2	2	3	2	2	2	3	2	3	1	2	3	3	1	2	3	1	2	1	1	41
2	4	4	2	3	3	3	3	3	3	3	3	3	3	2	3	3	3	3	2	3	59
3	3	3	2	3	3	3	3	2	2	3	3	3	3	2	2	3	3	3	3	3	55
4	3	3	2	3	3	3	3	3	4	3	3	3	4	3	3	3	3	3	3	3	61
5	1	3	1	3	1	3	4	2	3	2	4	3	3	2	1	3	3	2	3	3	50
6	3	3	2	3	2	3	3	3	3	3	3	3	3	2	2	3	3	3	2	3	55
7	3	3	2	3	3	2	3	2	4	3	3	3	3	2	3	3	3	3	2	3	56
8	3	2	2	2	3	2	2	2	2	3	3	3	2	3	3	3	2	2	3	2	49
9	4	1	3	3	3	3	3	3	3	3	3	3	2	3	3	3	3	3	3	3	58
10	4	4	3	3	3	3	4	3	3	4	4	4	4	2	3	4	4	3	3	3	68
11	1	3	3	3	1	2	3	1	3	3	1	3	3	2	3	3	3	3	2	3	49
12	2	2	4	2	4	3	3	3	4	3	1	3	4	2	3	4	3	4	2	4	60
13	4	3	2	3	3	3	3	2	3	3	3	2	3	2	3	3	3	3	3	3	57
14	4	4	4	4	4	4	4	3	4	4	4	4	4	4	4	4	4	4	3	4	78
15	4	4	4	4	4	4	4	3	4	4	4	4	4	4	4	4	4	4	3	4	45
16	2	3	2	3	2	1	3	2	3	2	3	2	4	1	1	3	2	4	1	1	78
17	3	3	3	2	2	3	3	3	3	2	3	3	3	3	2	3	2	2	3	3	54
18	4	2	3	3	3	3	4	3	4	3	4	4	4	4	2	4	4	4	3	2	67
20	3	3	3	4	2	4	3	3	3	3	4	4	3	3	3	4	4	3	3	4	66
22	3	3	4	4	3	2	4	3	4	2	4	3	4	3	3	4	3	4	3	4	67
23	3	3	2	2	3	3	3	2	3	3	3	3	3	2	3	3	3	3	3	3	56
24	3	3	2	2	3	2	4	2	2	2	3	3	2	2	3	3	2	2	3	2	50
26	4	4	2	4	4	4	4	3	2	3	3	3	4	3	4	4	4	4	3	2	68
27	3	3	2	3	3	4	4	3	3	3	3	4	4	3	3	3	3	3	3	3	63
28	4	4	2	3	4	4	4	3	4	4	4	3	4	3	4	4	3	3	3	4	71
29	3	3	2	3	2	4	3	2	4	3	4	3	3	3	3	4	3	3	3	4	62
30	3	3	3	3	3	3	3	3	3	3	3	3	3	3	3	4	3	3	3	4	62
33	4	4	4	4	4	4	4	4	3	4	4	4	4	3	4	4	4	4	4	4	78
34	2	2	2	2	2	2	3	2	2	3	3	4	3	3	3	1	3	2	2	2	48

35	3	4	3	2	3	4	4	3	2	3	3	3	3	2	3	3	3	3	2	59	
36	3	3	2	3	3	4	4	3	3	3	3	3	3	2	3	4	4	3	3	3	62
37	4	4	2	3	3	4	3	3	3	3	3	3	2	2	4	4	3	3	3	3	62
38	4	4	4	3	1	4	4	2	3	4	4	3	4	4	4	3	3	3	3	3	67
39	1	2	3	4	3	4	2	2	2	3	3	3	2	3	2	3	3	2	3	3	53
42	3	2	2	3	3	3	3	3	3	3	3	3	3	2	3	3	3	3	3	3	57
43	2	2	4	1	2	3	2	2	3	3	3	3	1	4	3	4	4	3	3	2	54
44	4	3	4	4	4	4	4	4	3	4	4	4	3	3	4	4	3	3	4	1	71
46	3	4	2	3	4	3	3	2	4	3	2	2	3	1	3	3	3	3	2	4	57
50	4	4	4	4	4	4	4	4	4	4	4	4	4	4	4	4	4	4	4	4	80
52	3	3	3	3	3	3	4	2	3	2	3	3	3	2	3	3	3	3	2	2	57
53	4	3	3	4	3	3	3	3	4	3	4	3	4	4	4	4	4	4	4	4	72
54	3	4	3	2	3	4	2	4	3	3	4	4	3	4	1	4	4	3	3	4	65
55	4	2	4	4	3	4	4	4	4	3	3	3	4	3	4	4	4	4	4	4	73
56	3	2	3	2	3	2	3	2	2	3	3	2	3	3	2	3	2	3	3	2	51
57	2	3	2	3	2	2	3	2	2	2	2	2	2	2	3	2	2	2	2	2	44
59	3	2	1	3	2	2	4	3	1	2	2	3	2	4	3	2	3	2	2	2	48
60	4	4	4	4	4	4	4	4	2	4	4	3	4	3	4	4	3	4	3	3	73

Tabulating Skala Attachment to God Inventory

No	1	2	3	4	5	6	7	8	9	10	11	12	13	14	15	16	17	18	19	20	21	22	23	24	25	26	27	28	Skor Total	Avoidance	Anxiety	
																														Σ of even items	Σ of odd items	
1	3	4	3	2	2	4	1	2	1	4	2	4	2	4	3	3	1	4	4	4	3	2	2	3	2	2	3	4	78	46	32	
2	3	4	3	2	3	3	3	3	3	3	2	3	2	3	3	3	3	3	3	3	3	3	3	3	3	3	2	3	3	81	41	40
3	2	4	3	3	3	2	3	3	3	3	2	3	2	3	2	3	3	3	3	3	3	2	3	3	2	3	3	3	78	41	37	
4	3	4	3	4	3	3	3	3	3	4	2	3	2	3	3	3	3	4	3	4	2	2	3	4	2	2	3	3	84	46	38	
5	3	4	4	4	3	4	2	3	4	4	4	4	3	3	3	4	3	4	3	3	3	3	4	4	4	4	2	3	4	96	50	46
6	3	3	3	3	3	3	2	3	3	3	3	3	2	3	3	3	3	4	3	4	2	3	3	3	3	1	2	3	3	80	43	37
7	2	4	3	4	3	4	4	3	1	4	2	2	2	3	2	3	2	4	2	4	2	3	1	3	2	3	3	4	79	48	31	
8	3	3	2	2	3	4	2	2	2	3	3	3	2	3	2	3	2	3	3	3	2	2	2	3	2	2	3	2	71	38	33	
9	1	4	1	4	1	4	3	4	1	4	4	1	1	1	2	4	2	4	3	3	3	4	3	4	4	1	4	4	79	46	33	
10	2	4	3	3	3	4	2	4	2	3	2	3	2	3	3	3	3	3	3	3	2	3	2	2	3	2	2	3	3	77	42	35
11	2	3	3	3	3	3	3	2	3	3	2	2	2	2	2	2	2	3	2	3	2	2	3	3	3	2	3	2	70	35	35	
12	3	4	3	3	3	4	3	3	4	4	2	1	2	4	1	3	2	4	3	4	4	3	3	4	2	3	3	4	86	48	38	
13	3	3	3	3	2	4	2	2	2	3	2	4	3	3	2	3	2	3	2	3	2	2	2	3	2	2	3	3	73	41	32	
14	4	4	4	3	2	3	2	3	3	4	4	4	2	3	3	4	3	4	3	4	4	3	2	2	1	3	2	4	87	48	39	
15	4	4	4	3	2	3	2	2	3	4	4	4	2	3	3	2	3	4	3	4	4	4	2	2	2	1	2	2	4	82	43	39
16	4	4	4	4	4	3	2	3	3	4	3	3	2	4	4	4	3	1	4	4	1	3	3	4	2	3	4	4	91	48	43	
17	3	3	3	2	3	2	3	3	2	3	2	3	2	2	2	3	2	3	3	3	3	2	2	3	2	3	3	3	73	38	35	
18	3	4	3	3	2	4	3	3	3	4	2	2	2	3	2	3	2	3	3	3	2	3	3	3	2	2	2	4	78	44	34	
19	3	4	4	2	4	4	4	3	2	3	4	4	2	3	3	4	4	3	4	2	3	2	3	3	2	3	4	4	90	44	46	
20	4	4	4	3	2	4	2	3	3	4	3	4	2	4	3	4	4	4	3	4	4	4	3	4	1	4	4	4	96	54	42	
21	3	3	3	3	3	3	3	2	3	3	2	3	2	3	2	3	2	3	3	3	3	2	3	3	2	2	3	3	76	39	37	
22	3	4	3	2	3	2	4	2	3	3	2	3	3	3	2	2	4	3	3	4	2	2	3	2	2	2	4	2	77	36	41	
23	1	4	3	3	1	4	1	3	1	4	2	2	2	3	3	3	3	4	3	4	4	3	3	4	1	2	4	1	76	44	32	
24	3	4	3	3	3	2	2	3	3	4	2	3	3	3	2	3	3	4	4	4	4	1	3	3	4	1	3	4	84	47	37	
25	3	4	4	4	4	4	4	3	2	4	2	3	2	3	2	3	4	4	4	4	2	2	2	4	1	2	3	3	86	47	39	
26	2	3	3	4	2	4	2	3	2	3	2	2	3	2	2	3	2	3	2	3	2	3	2	3	2	3	3	4	74	43	31	
27	4	4	3	3	3	4	3	3	3	3	2	3	2	3	2	4	2	4	3	4	2	3	2	4	2	3	3	4	85	49	36	
28	3	4	4	4	4	3	3	3	3	4	3	3	2	3	3	3	2	3	3	3	2	3	3	3	1	2	3	3	83	44	39	
29	3	4	3	3	4	3	4	3	3	3	3	3	3	2	2	3	2	4	3	3	2	3	3	3	2	3	3	4	84	44	40	
30	2	2	2	2	1	3	1	2	1	2	1	3	1	1	1	2	1	4	1	1	1	2	1	2	1	2	1	2	46	30	16	
31	2	4	3	3	2	3	2	3	2	4	2	2	3	2	2	3	2	3	2	3	1	3	1	4	1	3	2	3	70	43	27	
32	2	3	3	4	2	4	2	2	3	3	1	3	2	4	1	2	2	4	1	2	3	2	2	3	3	2	2	4	71	42	29	
33	2	4	3	4	4	4	4	2	2	4	2	3	3	2	3	2	2	3	3	2	3	2	3	4	2	2	3	3	80	41	39	

2	4	3	3	3	3	2	3	3	3	3	2	3	3	2	2	2	3	2	3	2	2	3	3	2	3	3	4	76	41	35	
3	3	3	3	3	3	2	2	2	3	2	3	2	3	2	3	2	3	3	3	2	3	2	3	2	2	3	3	73	40	33	
3	1	4	1	4	4	4	3	4	4	2	3	1	4	1	3	1	4	4	4	1	4	4	4	1	3	4	4	84	46	38	
1	4	2	3	3	4	4	3	2	3	1	2	2	2	2	4	2	4	2	3	1	3	2	4	1	3	2	4	73	46	27	
4	4	3	4	4	4	4	3	4	4	2	4	2	3	3	3	2	2	4	3	4	3	2	4	3	1	3	4	4	91	48	43
2	4	3	4	3	3	3	2	2	4	2	2	3	3	3	3	2	4	3	4	2	3	3	4	4	2	4	4	85	46	39	
2	4	3	4	3	1	3	3	2	4	2	3	2	3	2	2	1	4	3	4	2	3	2	3	1	2	3	4	75	44	31	
3	4	4	3	4	4	4	2	1	4	4	4	2	4	2	2	4	3	4	4	4	2	2	3	2	2	4	3	88	44	44	
2	4	4	4	3	4	4	3	2	3	2	1	2	4	1	3	1	3	2	2	1	2	3	2	1	4	4	3	74	42	32	
3	4	2	4	4	4	4	3	1	4	2	2	2	4	3	4	3	4	3	4	2	3	1	4	2	3	4	4	87	51	36	
4	4	4	4	4	3	4	3	4	4	2	2	2	1	2	2	2	1	3	4	3	2	4	4	2	2	4	4	84	40	44	
3	3	3	3	3	3	3	2	3	3	3	2	2	3	3	2	3	3	3	2	2	2	3	3	2	3	3	3	76	37	39	
2	4	3	4	4	2	2	2	3	4	2	2	3	3	2	3	1	3	1	3	1	3	3	2	4	2	3	2	73	39	34	
2	4	3	1	4	4	3	3	1	4	1	4	3	4	2	4	2	4	3	4	2	3	2	3	2	3	3	3	81	48	33	

Attachment to God-Avoidance

***** Method 1 (space saver) will be used for this analysis *****

RELIABILITY ANALYSIS - SCALE (ALPHA)

Item-total Statistics

	Scale Mean if Item Deleted	Scale Variance if Item Deleted	Corrected Item- Total Correlation	Alpha if Item Deleted
NO.2	39.8298	18.3182	.3265	.6940
NO.4	40.3830	19.2849	.0703	.7294
NO.6	40.1489	18.3034	.2425	.7048
NO.8	40.7872	18.3016	.4070	.6875
NO.10	39.9787	17.4995	.5859	.6697
NO.12	40.7021	19.9528	-.0268	.7437
NO.14	40.5745	17.7280	.3179	.6951
NO.16	40.5532	17.0352	.5197	.6698
NO.18	40.0851	18.4709	.2428	.7040
NO.20	40.2128	16.8668	.4697	.6740
NO.22	40.9149	17.7317	.4576	.6800
NO.24	40.2766	17.6392	.4269	.6820
NO.26	41.0426	18.8242	.2347	.7039
NO.28	40.1489	16.6947	.5116	.6684

Reliability Coefficients

N of Cases = 47.0

N of Items = 14

Alpha = .7098

Attachment to God-Avoidance

***** Method 1 (space saver) will be used for this analysis *****

RELIABILITY ANALYSIS - SCALE (ALPHA)

Item-total Statistics

	Scale Mean if Item Deleted	Scale Variance if Item Deleted	Corrected Item- Total Correlation	Alpha if Item Deleted
NO.2	33.8936	16.5319	.2668	.7553
NO.6	34.2128	16.1277	.2578	.7595
NO.8	34.8511	16.0426	.4531	.7376
NO.10	34.0426	15.6503	.5431	.7290
NO.14	34.6383	15.7576	.3039	.7544
NO.16	34.6170	14.8501	.5577	.7222
NO.18	34.1489	16.3469	.2485	.7591
NO.20	34.2766	14.9436	.4564	.7341
NO.22	34.9787	15.3691	.5295	.7278
NO.24	34.3404	15.4903	.4497	.7355
NO.26	35.1064	16.4884	.2819	.7537
NO.28	34.2128	14.9103	.4744	.7317

Reliability Coefficients

N of Cases = 47.0

N of Items = 12

Alpha = .7584

Attachment to God-Avoidance

***** Method 1 (space saver) will be used for this analysis *****

RELIABILITY ANALYSIS - SCALE (ALPHA)

Item-total Statistics

	Scale Mean if Item Deleted	Scale Variance if Item Deleted	Corrected Item- Total Correlation	Alpha if Item Deleted
NO.2	27.1064	12.5754	.3176	.7595
NO.8	28.0638	12.3219	.4684	.7424
NO.10	27.2553	11.9334	.5721	.7306
NO.14	27.8511	12.3034	.2628	.7724
NO.16	27.8298	11.4487	.5274	.7314
NO.20	27.4894	11.1684	.5030	.7345
NO.22	28.1915	11.8104	.5220	.7339
NO.24	27.5532	11.9482	.4333	.7448
NO.26	28.3191	12.7003	.2948	.7621
NO.28	27.4255	11.3802	.4704	.7396

Reliability Coefficients

N of Cases = 47.0

N of Items = 10

Alpha = .7650

Attachment to God-Avoidance

***** Method 1 (space saver) will be used for this analysis *****

RELIABILITY ANALYSIS - SCALE (ALPHA)

Item-total Statistics

	Scale Mean if Item Deleted	Scale Variance if Item Deleted	Corrected Item- Total Correlation	Alpha if Item Deleted
NO.2	24.1702	10.5791	.3245	.7691
NO.8	25.1277	10.1573	.5390	.7418
NO.10	24.3191	10.0916	.5520	.7399
NO.16	24.8936	9.5754	.5271	.7395
NO.20	24.5532	9.5134	.4554	.7523
NO.22	25.2553	9.8030	.5528	.7372
NO.24	24.6170	9.8501	.4804	.7470
NO.26	25.3830	10.9371	.2392	.7802
NO.28	24.4894	9.4727	.4778	.7481

Reliability Coefficients

N of Cases = 47.0

N of Items = 9

Alpha = .7724

Attachment to God-Avoidance

***** Method 1 (space saver) will be used for this analysis *****

RELIABILITY ANALYSIS - SCALE (ALPHA)

Item-total Statistics

	Scale Mean if Item Deleted	Scale Variance if Item Deleted	Corrected Item- Total Correlation	Alpha if Item Deleted
NO.2	21.7021	9.2572	.3353	.7791
NO.8	22.6596	8.9685	.5187	.7531
NO.10	21.8511	8.6947	.6041	.7409
NO.16	22.4255	8.4672	.4963	.7541
NO.20	22.0851	8.2100	.4761	.7594
NO.22	22.7872	8.5624	.5564	.7450
NO.24	22.1489	8.5208	.5070	.7522
NO.28	22.0213	8.4126	.4379	.7663

Reliability Coefficients

N of Cases = 47.0

N of Items = 8

Alpha = .7802

Tabulating Skala

Attachment to God Inventory (Avoidance)

Aitem	2	8	10	16	20	22	24	28	<i>Avoidance</i>
Subjek									Σ of even items
1	4	2	4	3	4	2	3	4	26
2	4	3	3	3	3	3	3	3	25
3	4	3	3	3	3	2	3	3	24
4	4	3	4	3	4	2	4	3	27
5	4	3	4	4	3	3	4	4	29
6	3	3	3	3	4	3	3	3	25
7	4	3	4	3	4	3	3	4	28
8	3	2	3	3	3	2	3	2	21
9	4	4	4	4	3	4	4	4	31
10	4	4	3	3	2	2	3	3	24
11	3	2	3	2	3	2	3	2	20
12	4	3	4	3	4	3	4	4	29
13	3	2	3	3	3	2	3	3	22
14	4	3	4	4	4	3	2	4	28
15	4	2	4	2	4	2	2	4	24
16	4	3	4	4	4	3	4	4	30
17	3	3	3	3	3	2	3	3	23
18	4	3	4	3	3	3	3	4	27
20	4	3	3	4	2	2	3	4	25
22	4	3	4	4	4	4	4	4	31
23	3	2	3	3	3	2	3	3	22
24	4	2	3	2	4	2	2	2	21
26	4	3	4	3	4	3	4	1	26
27	4	3	4	3	4	3	4	4	29
28	4	3	4	3	4	2	4	3	27
29	3	3	3	3	3	3	3	4	25
30	4	3	3	4	4	3	4	4	29
33	4	3	4	3	3	3	3	3	26
34	4	3	3	3	3	3	3	4	26
35	2	2	2	2	1	2	2	2	15
36	4	3	4	3	3	3	4	3	27
37	3	2	3	2	2	2	3	4	21
38	4	2	4	2	2	2	4	3	23
39	4	3	3	2	3	2	3	4	24
42	3	2	3	3	3	3	3	3	23
43	1	3	4	3	4	4	4	4	27
44	4	3	3	4	3	3	4	4	28
46	4	3	4	2	4	2	3	4	26
50	4	2	4	3	4	3	4	4	28

52	4	3	4	2	4	3	3	4	27
53	4	2	4	2	4	2	3	3	24
54	4	3	3	3	2	2	2	3	22
55	4	3	4	4	4	3	4	4	30
56	4	3	4	2	4	2	4	4	27
57	3	2	3	2	2	2	3	3	20
59	4	2	4	3	3	3	2	2	23
60	4	3	4	4	4	3	3	3	28

Attachment to God-Anxiety

***** Method 1 (space saver) will be used for this analysis *****

RELIABILITY ANALYSIS - SCALE (ALPHA)

Item-total Statistics

	Scale Mean if Item Deleted	Scale Variance if Item Deleted	Corrected Item- Total Correlation	Alpha if Item Deleted
NO.1	33.3830	25.6327	.4978	.7362
NO.3	32.9574	26.5634	.5039	.7390
NO.5	33.1277	25.7225	.4456	.7411
NO.7	33.2766	27.1610	.2415	.7639
NO.9	33.6170	26.0241	.3786	.7485
NO.11	33.7447	25.8030	.4678	.7391
NO.13	33.8936	29.6623	.0666	.7702
NO.15	33.7872	26.9537	.4071	.7462
NO.17	33.7234	25.5957	.4714	.7385
NO.19	33.2340	25.5310	.5592	.7312
NO.21	33.7234	26.9870	.2627	.7615
NO.23	33.5106	25.5162	.5412	.7324
NO.25	34.1702	29.5791	.0032	.7856
NO.27	32.9574	26.2155	.4974	.7380

Reliability Coefficients

N of Cases = 47.0

N of Items = 14

Alpha = .7624

Attachment to God-Anxiety

***** Method 1 (space saver) will be used for this analysis *****

RELIABILITY ANALYSIS - SCALE (ALPHA)

Item-total Statistics

	Scale Mean if Item Deleted	Scale Variance if Item Deleted	Corrected Item- Total Correlation	Alpha if Item Deleted
NO.1	26.4681	20.8631	.5884	.7735
NO.3	26.0426	21.9981	.5644	.7793
NO.5	26.2128	22.4755	.3227	.8021
NO.9	26.7021	21.8224	.3781	.7970
NO.11	26.8298	21.3617	.5063	.7822
NO.15	26.8723	22.4181	.4518	.7883
NO.17	26.8085	21.2451	.4981	.7830
NO.19	26.3191	21.0046	.6203	.7713
NO.21	26.8085	22.3321	.3066	.8055
NO.23	26.5957	21.6374	.5013	.7830
NO.27	26.0426	22.3895	.4379	.7894

Reliability Coefficients

N of Cases = 47.0

N of Items = 11

Alpha = .8025

Attachment to God-Anxiety

***** Method 1 (space saver) will be used for this analysis *****

RELIABILITY ANALYSIS - SCALE (ALPHA)

Item-total Statistics

	Scale Mean if Item Deleted	Scale Variance if Item Deleted	Corrected Item- Total Correlation	Alpha if Item Deleted
NO.1	24.1064	17.7058	.5870	.7759
NO.3	23.6809	18.7438	.5662	.7814
NO.5	23.8511	18.6512	.3969	.7989
NO.9	24.3404	18.4033	.4003	.7996
NO.11	24.4681	18.4718	.4562	.7913
NO.15	24.5106	19.2553	.4304	.7938
NO.17	24.4468	18.3830	.4464	.7927
NO.19	23.9574	17.8677	.6141	.7737
NO.23	24.2340	18.3136	.5170	.7843
NO.27	23.6809	19.0046	.4555	.7912

Reliability Coefficients

N of Cases = 47.0

N of Items = 10

Alpha = .8055

Tabulating Skala

Attachment to God Inventory (Anxiety)

Aitem	1	3	5	9	11	15	17	19	23	27	<i>Anxiety</i>
Subjek											Σ of odd items
1	3	3	2	1	2	3	1	4	2	3	24
2	3	3	3	3	2	3	3	3	3	3	29
3	2	3	3	3	2	2	3	3	3	3	27
4	3	3	3	3	2	3	3	3	3	3	29
5	3	4	3	4	4	3	3	3	4	3	34
6	3	3	3	3	3	3	3	3	3	3	30
7	2	3	3	1	2	2	2	2	1	3	21
8	3	2	3	2	3	2	2	3	2	3	25
9	1	1	1	1	4	2	2	3	3	4	22
10	2	3	3	2	2	3	3	3	2	3	26
11	2	3	3	3	2	2	2	2	3	3	25
12	3	3	3	4	2	1	2	3	3	3	27
13	3	3	2	2	2	2	2	2	2	3	23
14	4	4	2	3	4	3	3	3	2	2	30
15	4	4	2	3	4	3	3	3	2	2	30
16	4	4	4	3	3	4	3	4	3	4	36
17	3	3	3	2	2	2	2	3	2	3	25
18	3	3	2	3	2	2	2	3	3	2	25
20	3	4	4	2	4	3	4	4	3	4	35
22	4	4	2	3	3	3	4	3	3	4	33
23	3	3	3	3	2	2	2	3	3	3	27
24	3	3	3	3	2	2	4	3	3	4	30
26	1	3	1	1	2	3	3	3	3	4	24
27	3	3	3	3	2	2	3	4	3	4	30
28	3	4	4	2	2	2	4	4	2	3	30
29	2	3	2	2	2	2	2	2	2	3	22
30	4	3	3	3	2	2	2	3	2	3	27
33	3	4	4	3	3	3	2	3	3	3	31
34	3	3	4	3	3	2	2	3	3	3	29
35	2	2	1	1	1	1	1	1	1	1	12
36	2	3	2	2	2	2	2	2	1	2	20
37	2	3	2	3	1	1	2	1	2	2	19
38	2	3	4	2	2	3	2	3	3	3	27
39	2	3	3	3	3	2	2	2	3	3	26
42	3	3	3	2	2	2	2	3	2	3	25
43	3	4	4	4	2	1	1	4	4	4	31
44	1	2	3	2	1	2	2	2	2	2	19
46	4	3	4	4	2	3	2	3	4	4	33
50	2	3	3	2	2	3	2	3	3	4	27

52	2	3	3	2	2	2	1	3	2	3	23
53	3	4	4	1	4	2	4	4	2	4	32
54	2	4	3	2	2	1	1	2	3	4	24
55	3	2	4	1	2	3	3	3	1	4	26
56	4	4	4	4	2	2	2	3	4	4	33
57	3	3	3	3	3	3	3	3	3	3	30
59	2	3	4	3	2	2	1	1	3	3	24
60	2	3	4	1	1	2	2	3	2	3	23

Tabulasi Kategori Kedekatan Hubungan Antar Pribadi dan Attachment to God

No.	Usia	Jenis	Jenis	Kategori KHAP	Kategori	Kategori Anxiety
Subjek		Kelamin	Hubungan		Avoidance	
1	29	P	Saudara	Rendah	Tinggi	Sedang
2	28	P	Tunangan	Tinggi	Tinggi	Tinggi
3	25	L	Sahabat	Sedang	Tinggi	Sedang
4	22	P	Sahabat	Tinggi	Sangat Tinggi	Tinggi
5	27	P	Pacar	Sedang	Sangat Tinggi	Sangat Tinggi
6	24	L	Sahabat	Sedang	Tinggi	Tinggi
7	20	P	Sahabat	Tinggi	Sangat Tinggi	Rendah
8	27	L	Sahabat	Sedang	Sedang	Sedang
9	27	P	Sahabat	Tinggi	Sangat Tinggi	Rendah
10	27	L	Tunangan	Sangat Tinggi	Tinggi	Sedang
11	24	P	Pacar	Sedang	Sedang	Sedang
12	24	P	Pacar	Tinggi	Sangat Tinggi	Sedang
13	28	P	Suami-Istri	Tinggi	Sedang	Sedang
14	27	P	Suami-Istri	Sangat Tinggi	Sangat Tinggi	Tinggi
15	27	L	Suami-Istri	Rendah	Tinggi	Tinggi
16	26	P	Sahabat	Sangat Tinggi	Sangat Tinggi	Sangat Tinggi
17	27	L	Pacar	Sedang	Tinggi	Sedang
18	25	P	Sahabat	Sangat Tinggi	Sangat Tinggi	Sedang
20	21	L	Pacar	Sangat Tinggi	Tinggi	Sangat Tinggi
22	28	P	Sahabat	Sangat Tinggi	Sangat Tinggi	Sangat Tinggi
23	26	L	Pacar	Tinggi	Sedang	Sedang
24	27	L	Sahabat	Sedang	Sedang	Tinggi
26	32	L	Sahabat	Sangat Tinggi	Tinggi	Sedang
27	27	L	Sahabat	Tinggi	Sangat Tinggi	Tinggi
28	28	L	Suami-Istri	Sangat Tinggi	Sangat Tinggi	Tinggi
29	20	P	Pacar	Tinggi	Tinggi	Rendah
30	22	P	Sahabat	Tinggi	Sangat Tinggi	Sedang
33	34	L	Suami-Istri	Sangat Tinggi	Tinggi	Tinggi
34	28	L	Sahabat	Sedang	Tinggi	Tinggi
35	21	L	Sahabat	Tinggi	Rendah	Sangat Rendah
36	31	L	Pacar	Tinggi	Sangat Tinggi	Rendah
37	25	L	Pacar	Tinggi	Sedang	Rendah
38	31	P	Sahabat	Sangat Tinggi	Tinggi	Sedang
39	23	L	Teman	Sedang	Tinggi	Sedang
42	32	L	Suami-Istri	Tinggi	Tinggi	Sedang
43	30	L	Sahabat	Sedang	Sangat Tinggi	Tinggi
44	26	L	Pacar	Sangat Tinggi	Sangat Tinggi	Rendah
46	31	L	Suami-Istri	Tinggi	Tinggi	Sangat Tinggi
50	30	P	Suami-Istri	Sangat Tinggi	Sangat Tinggi	Sedang
52	31	L	Sahabat	Tinggi	Sangat Tinggi	Sedang
53	26	L	Pacar	Sangat Tinggi	Tinggi	Tinggi
54	25	P	Pacar	Tinggi	Sedang	Sedang
55	23	L	Sahabat	Sangat Tinggi	Sangat Tinggi	Sedang
56	20	L	Sahabat	Sedang	Sangat Tinggi	Sangat Tinggi
57	30	P	Sahabat	Rendah	Sedang	Tinggi
59	21	L	Sahabat	Sedang	Tinggi	Sedang
60	24	P	Pacar	Sangat Tinggi	Sangat Tinggi	Sedang

	khap	avoid	anxiety
1	41	26	24
2	59	25	29
3	55	24	27
4	61	27	29
5	50	29	34
6	55	25	30
7	56	28	21
8	49	21	25
9	58	31	22
10	68	24	26
11	49	20	25
12	60	29	27
13	57	22	23
14	78	28	30
15	45	24	30
16	78	30	36
17	54	23	25
18	67	27	25
19	66	25	35
20	67	31	33
21	56	22	27
22	50	21	30
23	68	26	24
24	63	29	30
25	71	27	30
26	62	25	22
27	62	29	27
28	78	26	31
29	48	26	29
30	59	15	12
31	62	27	20
32	62	21	19
33	67	23	27
34	53	24	26
35	57	23	25
36	54	27	31
37	71	28	19
38	57	26	33
39	80	28	27

	khap	avoid	anxiety
40	57	27	23
41	72	24	32
42	65	22	24
43	73	30	26
44	51	27	33
45	44	20	30
46	48	23	24
47	73	28	23

Test of Normality: Kedekatan Hubungan Antar Pribadi

Case Processing Summary

	Cases	
	Valid	
	N	Percent
Kedekatan Hubungan Antar Pribadi	47	100.0%

Case Processing Summary

	Cases			
	Missing		Total	
	N	Percent	N	Percent
Kedekatan Hubungan Antar Pribadi	0	.0%	47	100.0%

Descriptives

		Statistic	Std. Error	
Kedekatan Hubungan Antar Pribadi	Mean	60.34	1.42	
	95% Confidence Interval for Mean	Lower Bound	57.49	
		Upper Bound	63.20	
	5% Trimmed Mean	60.28		
	Median	59.00		
	Variance	94.577		
	Std. Deviation	9.73		
	Minimum	41		
	Maximum	80		
	Range	39		
	Interquartile Range	13.00		
	Skewness	.194	.347	
	Kurtosis	-.612	.681	

Tests of Normality

	Kolmogorov-Smirnov ^a		
	Statistic	df	Sig.
Kedekatan Hubungan Antar Pribadi	.081	47	.200*

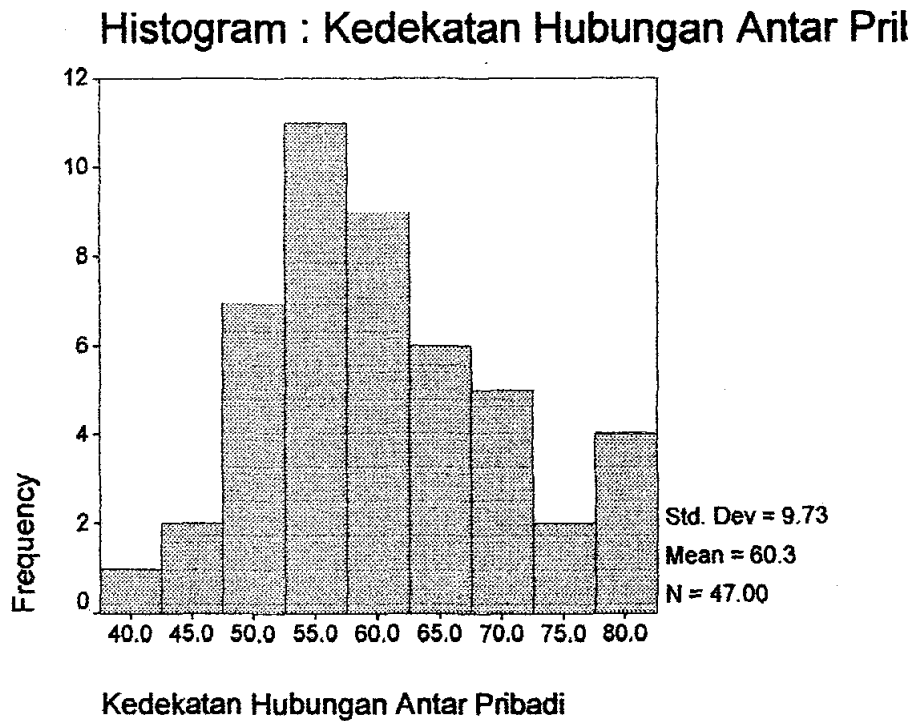
Tests of Normality

	Shapiro-Wilk		
	Statistic	df	Sig.
Kedekatan Hubungan Antar Pribadi	.971	47	.439

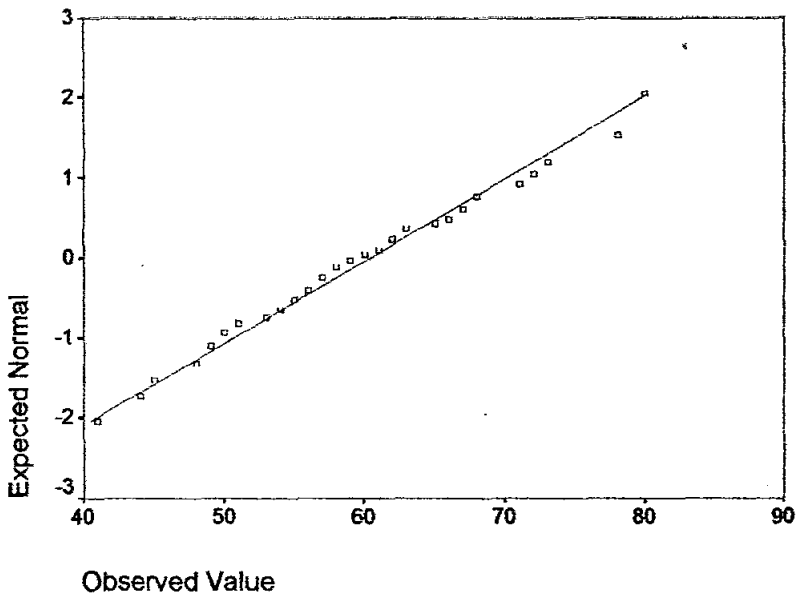
*. This is a lower bound of the true significance.

a. Lilliefors Significance Correction

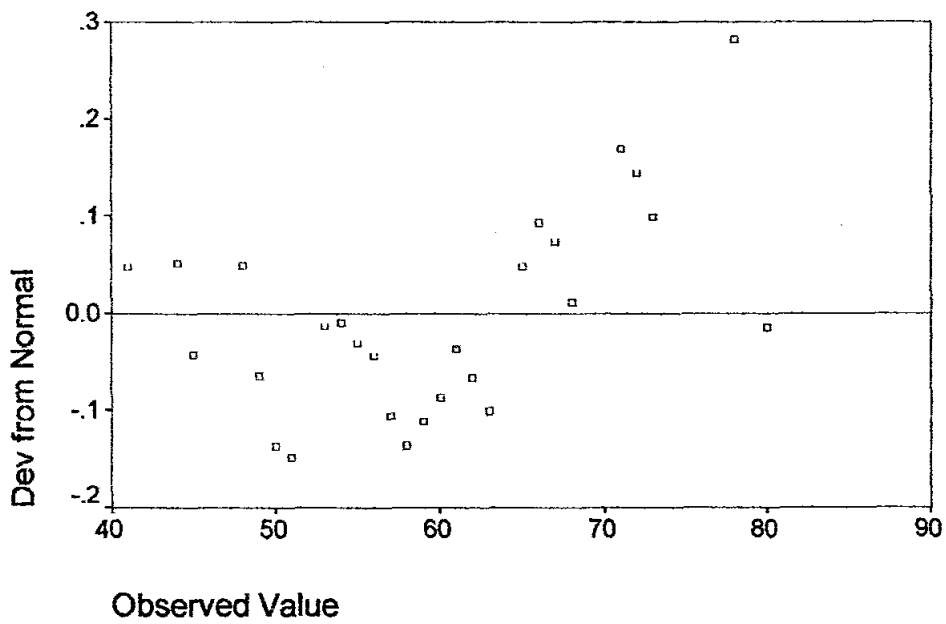
Kedekatan Hubungan Antar Pribadi



Normal Q-Q Plot of Kedekatan Hubungan A



Detrended Normal Q-Q Plot of Kedekatan Hubungan Antar Pribadi



Test of Normality: Attachment to God-Avoidance

Case Processing Summary

	Cases					
	Valid		Missing		Total	
	N	Percent	N	Percent	N	Percent
Attachment to God-Avoidance	47	100.0%	0	.0%	47	100.0%

Descriptives

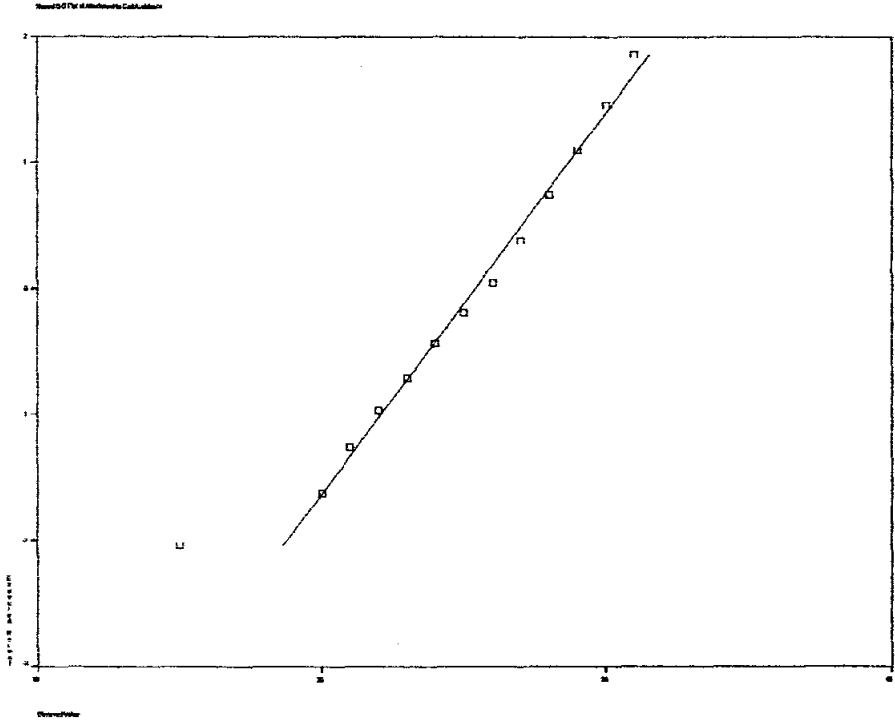
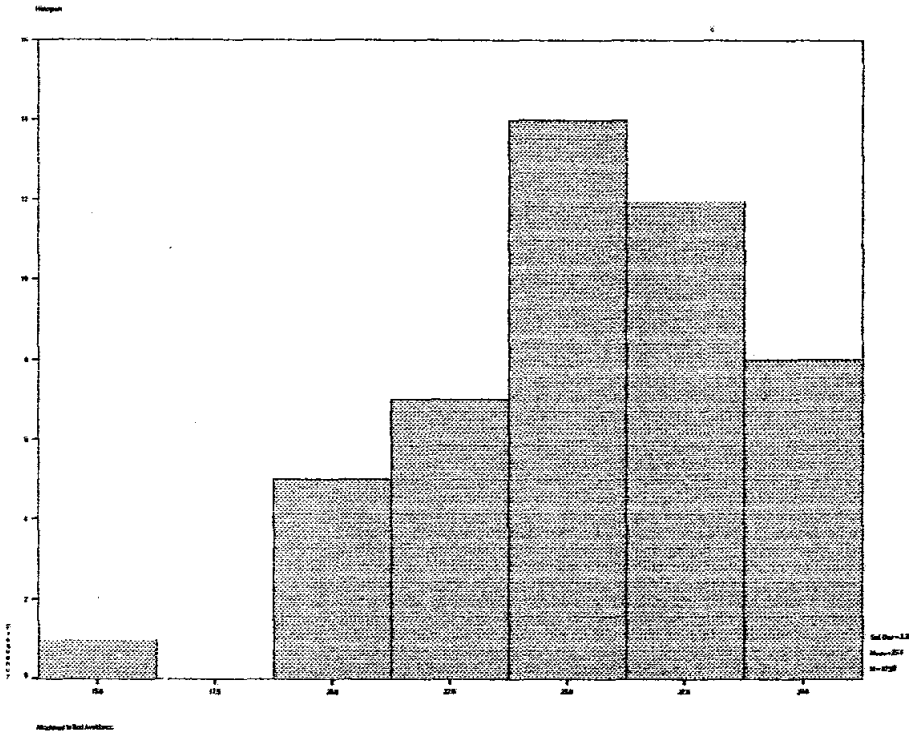
		Statistic	Std. Error	
Attachment to God-Avoidance	Mean	25.38	.48	
	95% Confidence Interval for Mean	Lower Bound	24.41	
		Upper Bound	26.35	
	5% Trimmed Mean	25.50		
	Median	26.00		
	Variance	10.937		
	Std. Deviation	3.31		
	Minimum	15		
	Maximum	31		
	Range	16		
	Interquartile Range	5.00		
	Skewness	-.632	.347	
	Kurtosis	.690	.681	

Tests of Normality

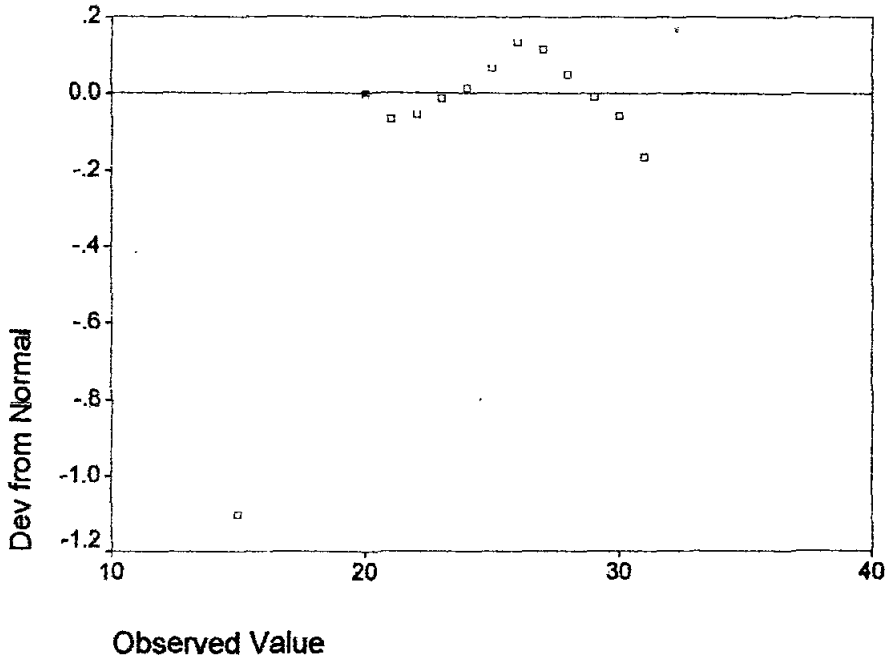
	Kolmogorov-Smirnov ^a			Shapiro-Wilk		
	Statistic	df	Sig.	Statistic	df	Sig.
Attachment to God-Avoidance	.113	47	.170	.963	47	.282

a. Lilliefors Significance Correction

Attachment to God-Avoidance



Detrended Normal Q-Q Plot of Attachment



Test of Normality: Attachment to God-Anxiety

Case Processing Summary

	Cases	
	Valid	
	N	Percent
Attachment to God-Anxiety	47	100.0%

Case Processing Summary

	Cases			
	Missing		Total	
	N	Percent	N	Percent
Attachment to God-Anxiety	0	.0%	47	100.0%

Descriptives

			Statistic
Attachment to God-Anxiety	Mean		26.81
	95% Confidence Interval for Mean	Lower Bound	25.42
		Upper Bound	28.20
	5% Trimmed Mean		26.94
	Median		27.00
	Variance		22.332
	Std. Deviation		4.73
	Minimum		12
	Maximum		36
	Range		24
	Interquartile Range		6.00
	Skewness		-.487
	Kurtosis		.851

Descriptives

			Std. Error
Attachment to God-Anxiety	Mean		.69
	95% Confidence Interval for Mean	Lower Bound	
		Upper Bound	
	5% Trimmed Mean		
	Median		
	Variance		
	Std. Deviation		
	Minimum		
	Maximum		
	Range		
	Interquartile Range		
	Skewness		.347
	Kurtosis		.681

Tests of Normality

	Kolmogorov-Smirnov ^a		
	Statistic	df	Sig.
Attachment to God-Anxiety	.091	47	.200*

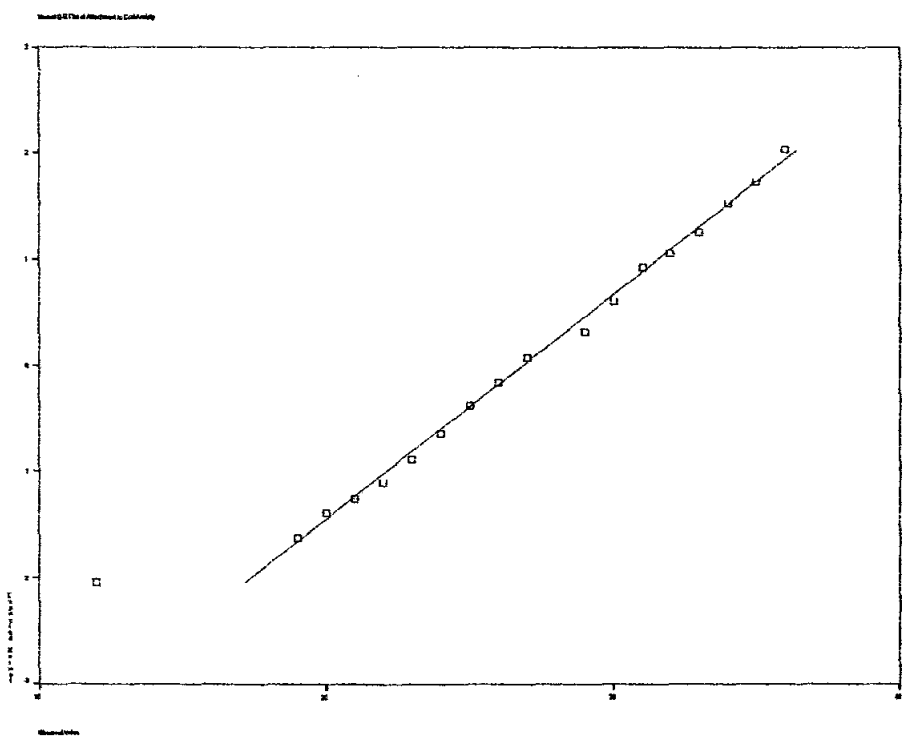
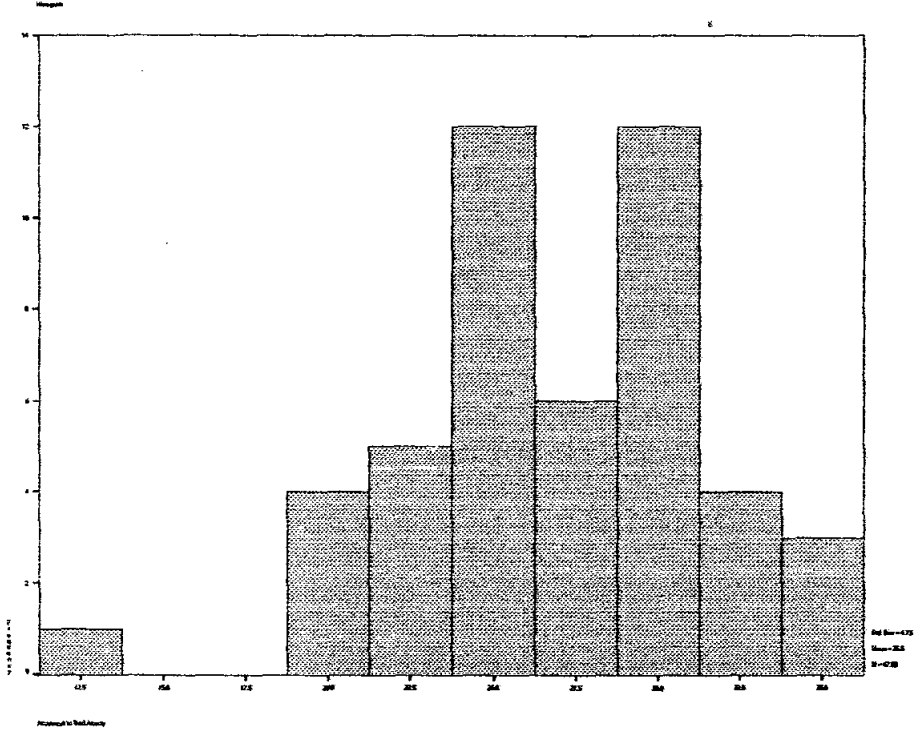
Tests of Normality

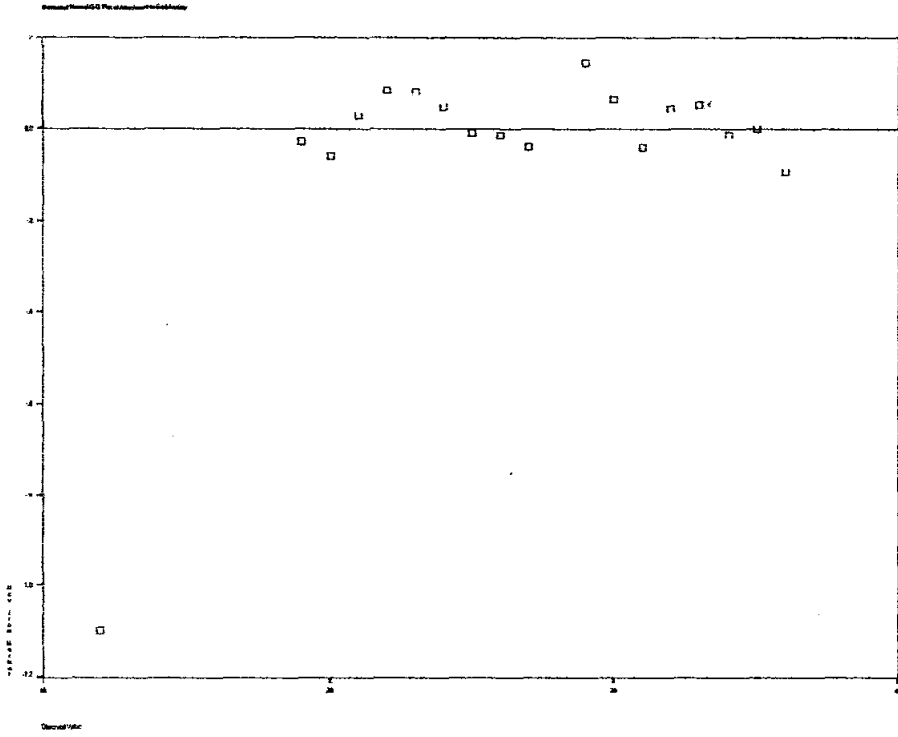
	Shapiro-Wilk		
	Statistic	df	Sig.
Attachment to God-Anxiety	.975	47	.528

*. This is a lower bound of the true significance.

a. Lilliefors Significance Correction

Attachment to God-Anxiety





Test of linearity: Kedekatan Hubungan Antar Pribadi dan Attachment to God-Avoidance

Case Processing Summary

	Cases					
	Included		Excluded		Total	
	N	Percent	N	Percent	N	Percent
Kedekatan Hubungan Antar Pribadi * Attachment to God-Avoidance	47	100.0%	0	.0%	47	100.0%

Report

Kedekatan Hubungan Antar Pribadi

Attachment to God-Avoidance	Mean	N	Std. Deviation
15	59.00	1	.
20	46.50	2	3.54
21	53.67	3	7.23
22	59.33	3	4.93
23	56.50	4	7.94
24	58.60	5	11.15
25	60.50	4	4.65
26	58.40	5	14.91
27	60.43	7	7.07
28	71.60	5	9.45
29	58.75	4	5.97
30	75.50	2	3.54
31	62.50	2	6.36
Total	60.34	47	9.73

ANOVA Table

			Sum of Squares	df	Mean Square	F	Sig.
Kedekatan Hubungan Antar Pribadi* Attachment to God-Avoidance	Between	(Combined)	1727.656	12	143.971	1.866	.076
	Groups	Linearity	698.655	1	698.655	9.056	.005
		Deviation from Linearity	1029.001	11	93.546	1.213	.316
	Within Groups		2622.898	34	77.144		
	Total		4350.553	46			

Measures of Association

	R	R Squared	Eta	Eta Squared
Kedekatan Hubungan Antar Pribadi* Attachment to God-Avoidance	.401	.161	.630	.397

Test of Linearity: Kedekatan Hubungan Antar Pribadi dan Attachment to God-Anxiety

Case Processing Summary

	Cases					
	Included		Excluded		Total	
	N	Percent	N	Percent	N	Percent
Kedekatan Hubungan Antar Pribadi * Attachment to God-Anxiety	47	100.0%	0	.0%	47	100.0%

Report

Kedekatan Hubungan Interpersonal

Attachment to	Mean	N	Std. Deviation
12	59.00	1	.
19	66.50	2	6.36
20	62.00	1	.
21	58.00	1	.
22	60.00	2	2.83
23	62.33	3	9.24
24	55.50	4	13.08
25	55.20	5	7.43
26	64.67	3	10.41
27	63.33	6	9.24
29	58.00	3	7.00
30	58.00	7	13.11
31	66.00	2	16.97
32	72.00	1	.
33	58.33	3	8.08
34	50.00	1	.
35	66.00	1	.
36	78.00	1	.
Total	60.34	47	9.73

ANOVA Table

			Sum of Squares	df	Mean Square	F	Sig.
Kedekatan Hubungan Antar Pribadi * Attachment to God-Anxiety	Between Groups	(Combined)	1204.920	17	70.878	.653	.820
		Linearity	18.022	1	18.022	.166	.687
		Deviation from Linearity	1186.898	16	74.181	.684	.786
	Within Groups		3145.633	29	108.470		
	Total		4350.553	46			

Measures of Association

	R	R Squared	Eta	Eta Squared
Kedekatan Hubungan Antar Pribadi * Attachment to God-Anxiety	.064	.004	.526	.277

Correlation : Kedekatan Hubungan Antar Pribadi dan Attachment to God-Avoidance

Correlations

		Kedekatan Hubungan Antar Pribadi	Attachment to God-Avoidance
Kedekatan Hubungan Antar Pribadi	Pearson Correlation	1.000	.401**
	Sig. (2-tailed)	.	.005
	N	47	47
Attachment to God-Avoidance	Pearson Correlation	.401**	1.000
	Sig. (2-tailed)	.005	.
	N	47	47

** . Correlation is significant at the 0.01 level (2-tailed).

Nonparametric Correlation : Kedekatan Hubungan Antar Pribadi dan Attachment to God-Anxiety

Correlations

			Kedekatan Hubungan Antar Pribadi	Attachment to God-Anxiety
Kendall's tau_b	Kedekatan Hubungan Antar Pribadi	Correlation Coefficient	1.000	.010
		Sig. (2-tailed)	.	.926
		N	47	47
	Attachment to God-Anxiety	Correlation Coefficient	.010	1.000
		Sig. (2-tailed)	.926	.
		N	47	47

PERPUSTAKAAN
Universitas Katolik Widya Mandala
SURABAYA