

# REPOSITORI INSTITUSI DAN KINERJA PERGURUAN TINGGI

*Worskshop Batch II, UKWM Surabaya,  
19 Desember 2017*



*Widyo Winarso  
Sekretaris Pelaksana Kopertis Wilayah VII  
wwinarso@ristekdikti.go.id*

# **Indonesia** Digital

**262 Juta Penduduk**

**262 Juta  
Penduduk**

**4,576 PT**

3,246 PT Kemristekdikti

**5,03 Juta Mhs**

4,37 Juta Mhs Kemristekdikti

**132,7 Juta**

Pengguna Internet (51%)

**106,0 Juta**

Pengguna Medsos (40%)

**65 %**

Percaya berita tanpa cek-recek



**3,5 jam sehari**

Online

# **3 jam sehari**

Medsos

**54 %**

Facebook

**62 %**

Shop Online

**18 %**

Fintech User

**43.000 Media Daring**

234 yang sesuai ketentuan UU Pers

Berapa jumlah teks/frasa yang dicari setiap hari di Google?

<http://www.internetlivestats.com/google-search-statistics/>

Growth 17.000%/year

# Jumlah website di dunia, dan pertumbuhannya?

- <http://www.internetlivestats.com/watch/websites/>

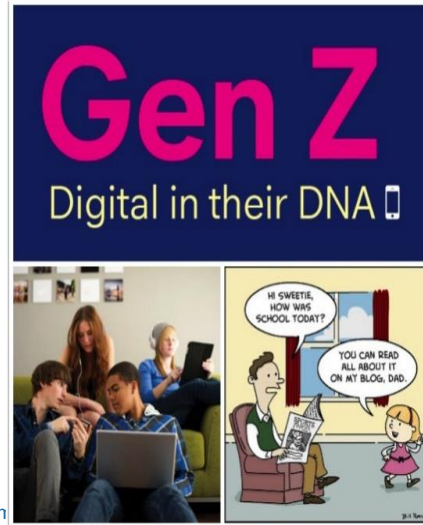


Berapa yg nge-twit hari/saat ini?

<http://www.internetlivestats.com/twitter-statistics/>

**Era Now**

# Tantangan: Generasi Z (1995-2010)



*Face-to-face vs Online Learning*  
*Lateral learning* sebagai salah satu cara untuk pengembangan karakter (tidak hanya cukup dengan *online learning*).

GENERATION Z:  
CONNECTED FROM BIRTH.

Born mid-1990s to 2010.



<http://www.enterprisehive.com/post/generation-z-is-ready-for-college-is-college-ready-for-generation-z/>

<http://www.engagor.com/blog/is-your-brand-ready-for-generation-z/>

***internet (digital natives), net generation, i-generation***

*“To move forward, we all should have well-educated minds so that we will be able to better understand our world, our problems, and each other” (generation Z student)*



**1956**  
IBM 350 for IBM 305 RAMAC

**2005**



**2014**

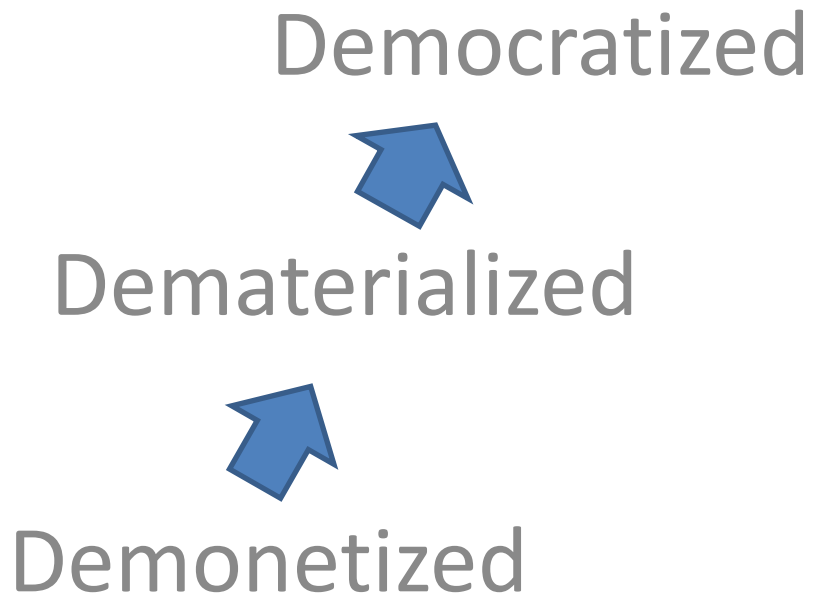


**5 Mbytes - \$120,000    128 Mbytes - \$99    128 Gbytes - \$99**

# Exponential Organizations



# Exponential Organizations



# Institutional Repositories

- What are 'institutional repositories'?
- Why set them up?
- How can they be set up?



# Open Access

## What is it?

Call for *free, unrestricted access* on the public internet to the literature that scholars give to the world *without expectation of payment*.

## Why?

Widen dissemination, accelerate research, enrich education, share learning amongst all nations, enhance return on taxpayer investment in research.

## How?

Use existing funds to pay for *dissemination*, not *access*.

# What are institutional repositories?

## Essential elements

- *Institutionally defined*: Content generated by institutional community
- *Scholarly content*: preprints and working papers, published articles, enduring teaching materials, student theses, data-sets, etc.
- *Cumulative & perpetual*: preserve ongoing access to material
- *Interoperable & open access*: free, online, global

# Institutional repositories Dev?

Essential aspect

- *Human Resources*
- *Infrastructure*
- *Regulation*
- *Academic staff*

# RANKING WEB OF REPOSITORIES

[Universities](#)[Hospitals](#)[Business  
Schools](#)[Research  
Centers](#)[HOME](#) [NORTH AMERICA](#) [LATIN AMERICA](#) [EUROPE](#) [ASIA](#) [AFRICA](#) [ARAB WORLD](#) [OCEANIA](#) [BY AREAS](#) [TOP INSTITUTIONALS](#) [TOP PORTALS](#)[Home](#) » [Asia](#) » [Indonesia](#)

## Current Edition

July 2016 (2016.2.0)

### About Us

- [About Us](#)
- [Contact Us](#)

### About the Ranking

- [Methodology](#)
- [Objectives](#)

### Resources

- [Best Practices](#)
- [Links](#)

## Indonesia

ranking	<a href="#">World Rank</a> ↕	<a href="#">Instituto</a>	<a href="#">Size</a>	<a href="#">Visibility</a>	<a href="#">Files Rich</a>	<a href="#">scholar</a>
1	102	<a href="#">Diponegoro University Institutional Repository</a>	345	229	336	26
2	132	<a href="#">Boqor Agricultural University Scientific Repository</a>	30	485	218	19
3	235	<a href="#">Gunadarma University Repository</a>	1654	53	740	852
4	265	<a href="#">Universitas Muhammadiyah Surakarta Digital Library</a>	156	648	422	28
5	322	<a href="#">Yogyakarta State University Repository</a>	458	622	535	52
6	332	<a href="#">University of Muhammadiyah Malang Institutional Repository</a>	648	586	824	45
7	375	<a href="#">Repository Universitas Pendidikan Indonesia / Indonesia University of Education</a>	418	633	566	127
8	434	<a href="#">Gadjah Mada State University Repository</a>	77	1027	873	17
9	448	<a href="#">Digital Library Universitas Islam Negeri Sunan Kalijaga Yogyakarta</a>	619	765	673	99
10	452	<a href="#">Universitas Sebelas Maret Institutional Repository</a>	497	816	652	70



**Terima Kasih**