

Anti-diabetes activity of Kombucha prepared from different snake fruit cultivars

by Ignatius Srinta

FILE	ANTI_DIABETES_ACTIVITY.PDF (249.67K)		
TIME SUBMITTED	22-NOV-2019 11:27AM (UTC+0700)	WORD COUNT	6415
SUBMISSION ID	1219239956	CHARACTER COUNT	33369



Nutrition & Food Science

Anti-diabetes activity of Kombucha prepared from different snake fruit cultivars

Elok Zubaidah, Raida Amelia Ifadah, Umi Kalsum, Diana Lyrawati, Widya Dwi Rukmi Putri, Ignatius Srinta, Philippe J. Blanc,

Article information:

To cite this document:

Elok Zubaidah, Raida Amelia Ifadah, Umi Kalsum, Diana Lyrawati, Widya Dwi Rukmi Putri, Ignatius Srinta, Philippe J. Blanc, (2018) "Anti-diabetes activity of Kombucha prepared from different snake fruit cultivars", Nutrition & Food Science, <https://doi.org/10.1108/NFS-07-2018-0201>

Permanent link to this document:

<https://doi.org/10.1108/NFS-07-2018-0201>

Downloaded on: 29 October 2018, At: 04:15 (PT)

References: this document contains references to 41 other documents.

To copy this document: permissions@emeraldinsight.com

The fulltext of this document has been downloaded 25 times since 2018*

Access to this document was granted through an Emerald subscription provided by

Token: Eprints: IYQWXVZRZWXYZCIQ2HBGI:

For Authors

If you would like to write for this, or any other Emerald publication, then please use our Emerald for Authors service information about how to choose which publication to write for and submission guidelines are available for all. Please visit www.emeraldinsight.com/authors for more information.

About Emerald www.emeraldinsight.com

Emerald is a global publisher linking research and practice to the benefit of society. The company manages a portfolio of more than 290 journals and over 2,350 books and book series volumes, as well as providing an extensive range of online products and additional customer resources and services.

Emerald is both COUNTER 4 and TRANSFER compliant. The organization is a partner of the Committee on Publication Ethics (COPE) and also works with Portico and the LOCKSS initiative for digital archive preservation.

*Related content and download information correct at time of download.

Anti-diabetes activity of Kombucha prepared from different snake fruit cultivars

Anti-diabetes
activity of
Kombucha

Elk Zubaidah and Raida Amelia Ifadah

*Department of Food Science and Technology,
Brawijaya University, Malang, Indonesia*

Umi Kalsum and Diana Lyrawati

*Department of Pharmacology, Faculty of Medicine,
Brawijaya University, Malang, Indonesia*

Widya Dwi Rukmi Putri

*Department of Food Science and Technology,
Brawijaya University, Malang, Indonesia*

Ignatius Srinta

*Department of Food Technology,
Widya Mandala Catholic University, Surabaya, Indonesia, and*

Philippe J. Blanc

Université de Toulouse, Toulouse, France

Received 12 July 2018
Revised 18 August 2018
Accepted 18 August 2018

13

Abstract

Purpose – This paper aims to study the anti-diabetes activity of the Kombucha prepared from different snake fruit cultivars.

Design/methodology/approach – The juices of snake fruits of Suwaru, Madura, Pondoh and Bali cultivars were fermented for 14 days. Anti-diabetes activity of the products was analyzed. Twenty-four male albino Wistar rats were used and randomly divided into six experimental groups, i.e. four groups of the diabetic rats treated with the Kombucha, plus the normal group and diabetic control group. The Kombucha were orally administered to the streptozotocin induced-diabetic rats at 5 mL/kg body weight per day during the 28-day experiment. The fasting plasma glucose (FPG), oxidative stress indices (superoxide dismutase [SOD] activity and Malondialdehyde [MDA] level) and lipid profile of the blood plasma were measured. The pancreas was used for immunohistochemical study and β -cells quantification. Data were analysed by ANOVA followed by Fisher test using Minitab version 16.0.

Findings – FPG of the diabetic rats treated with the Kombucha (110.3–189.3 mg/dL) was significantly lower ($p = 0.000$) than the diabetic control group (413.3 mg/dL). Those were in line with the number of pancreatic β -cells of 42.1 in diabetic rats that lower ($p = 0.006$) than those in treated the diabetic rats (61.2–73.5). The treated diabetic rats had lower oxidative stress (SOD activity: 20.9–44.6 unit/100 μ L with $p = 0.000$; MDA level: 0.37–0.48 ng/100 μ L with $p = 0.000$) than those in the diabetic rats (SOD activity: 18.7 unit/100 μ L; MDA level: 0.84 ng/100 μ L). The treated diabetic rats also showed better lipid profile than those in the diabetic control rats. There were cultivar differences, and the Suwaru and Madura snake fruit Kombucha demonstrated the most potential for diabetes management.

Declaration of interest: The authors of this research declare no conflict of interest.



Nutrition & Food Science
© Emerald Publishing Limited
0034-6659
DOI 10.1108/NFS-07-2018-0201

Originality/value – This is the first study on in vivo anti-diabetes activity of snake fruit Kombucha prepared from different snake fruit cultivars.

Keywords In vivo, Anti-diabetes, Diabetic rats, Snake fruit, Kombucha

Paper type Research paper

57

Introduction

Diabetes mellitus is a chronic metabolic disease, in which homeostasis of the carbohydrate and lipid metabolisms are improperly regulated (Tiware and Rao, 2002). Diabetes is a big health problem throughout the world, with more than 415 million currently diabetic and this is estimated to be about 642 million in 2040 (Ogusova *et al.*, 2017). Clinically, diabetic patients are characterized by high blood glucose level when the pancreas does not produce enough insulin or the insulin produced cannot be used effectively. Complications of diabetes are disabling and life threatening. Diabetes is also associated with fundamental changes in serum lipids profile (Govindji, 1990; Aloulou *et al.*, 2012; Rahimi-Madiseh *et al.*, 2017; Ani and Aginam, 2018).

Diabetes is mainly managed by insulin injections and administration of hypoglycemic drugs, which unfortunately can have several and severe adverse effects (Marin-Peñalver *et al.*, 2016). The search for an effective and safer treatment is, therefore, of great importance. Recently, functional foods and nutraceuticals are becoming prominent in diabetes therapeutic treatments (Metcalf *et al.*, 2010; Ballali and Lanciari, 2012; Pereira *et al.*, 2016), and Kombucha has been reported as a therapeutic agent for hyperglycemia and dyslipidemia in diabetic animal models (Aloulou *et al.*, 2012; Srihari *et al.*, 2013). Kombucha tea is a beverage that has been consumed in Asia for over two millennia and is a notable traditional fermented foods globally (Jayabalan *et al.*, 2014). The putative health benefits associated with Kombucha tea have been largely attributed to its phenolic compounds. In addition, organic acids, vitamins, amino acids, antibiotics and a variety of micronutrients produce during the fermentation of Kombucha may also aid the health benefits to a reasonable extent (Vijayaraghavan *et al.*, 2000).

Several studies have demonstrated that Kombucha tea can be used in managing diabetes, and several mechanisms have been proposed to explain this desirable outcome (Bhattacharya *et al.*, 2011; Aloulou *et al.*, 2012; Srihari *et al.*, 2013). The proposed mechanisms include reduction in pancreatic β -cell damage, increase in insulin production, decrease uptake of glucose from the digestive system and increase in cellular glucose uptake (Bhattacharya *et al.*, 2011; Aloulou *et al.*, 2012; Srihari *et al.*, 2013). Tea is the main raw material for making Kombucha, whose desirable functional and nutraceutical properties have led to researches on other substrates for its manufacture (Gamboa-Gómez *et al.*, 2016; Lobanova *et al.*, 2016; Ayed *et al.*, 2017). Recently, Zubaidah *et al.* (2018) demonstrated the suitability of snake fruit (*Salacca zalacca* (Gaerth.) Voss) for making Kombucha. However, the potential of the snake fruit Kombucha in diabetes treatment has not been investigated. Therefore, the purpose of this research was to study the anti-diabetes activity of Kombucha prepared from different snake fruit cultivars.

Materials and methods

Materials

Snake fruits of commercial maturity were of cultivars Suwaru, Madura, Pondoh and Bali, and were obtained locally, so also commercial Kombucha starter and cane sugar. Streptozotocin (Sigma Aldrich, Germany), anthrone reagent (Merck 101468, Germany), sodium hydroxide (Merck 106462, Germany), Folin-Ciocalteu phenol reagent (Sigma F9252, Germany), 2,2-diphenyl-1-picrylhydrazyl (DPPH) (Sigma Aldrich, Germany), thiobarbituric acid (Sigma Aldrich, Germany), lipid peroxidation malondialdehyde (MDA) assay kit (Sigma Aldrich,

Germany), superoxide dismutase (SOD) assay kit (Sigma Aldrich, Germany), antibody anti-insulin (ScyTek Laboratories, Inc.) and the other chemicals used, were of analytical grade.

Anti-diabetes
activity of
Kombucha

Snake fruit Kombucha preparation and analysis

As described before (Zubaidah *et al.*, 2018), the snake fruits were peeled, washed and cut into small sizes, before mixing (1:1, w/w) with water, juicing, filtering, sweetening (10 per cent, w/v) with the cane sugar, pasteurizing (65°C, 30 min), and cooling to ambient temperature prior to storing refrigerated in a sterile jar. The sweetened juices were aseptically inoculated (10 per cent, v/v) with the Kombucha starter and fermented ($28 \pm 3^\circ\text{C}$) for 14 days. The physicochemical and antioxidant properties of the products were analyzed as reported before (Zubaidah *et al.*, 2018).

Animal experiment

Male albino Wistar rats (age 2.5-3.0 months, body weight 150-200 g) were used. The experimental protocols and procedures of care and use of animals used in the present work were approved (ethical clearance 40, KEP-749-UB) by the Ethics Committee. The rats were induced by a intra-peritoneally injection of freshly prepared streptozotocin (STZ, dissolved in 0.1 mol/L citrate buffer, pH 4.5) at a dose of 45 mg/kg body weight. Control rats were injected with the same volume of isotonic saline. After 72 hr., the plasma glucose was determined using a blood glucose test meter model AGM-2100 with strip glucotest Gluco DrTM No. 8 (Allmedicus, K33a). Before the plasma glucose was measured, the rats were fasted for 10-12 h, and the rats with a fasting plasma glucose (FPG) level greater than 250 mg/dL were classified as diabetic and used. There was 24 rats, which were randomly divided into six experimental groups, implying four replications per group. The six groups being the diabetic rats that received (5 mL/kg per day) the snake fruit Kombucha ([DM + KS Suwaru], [DM + KS Madura], [DM + KS Pondoh] and [DM + KS Bali]), plus the normal (Normal) and diabetic (DM) control rats. All the rats had access to a standard diet (Comfeed PARS; Japfa Comfeed Indonesia Tbk) and water was provided ad libitum. The snake fruit Kombucha were orally administered to the rats using an intra-gastric tube daily during the 28-day experiment. The initial and final FPG of the rats in various groups were measured. At the end of the experimental period, the rats were fasted overnight and sacrificed by dislocation cervical. Blood samples were collected from heart tissues and placed in a tube. Plasma was immediately separated by centrifugation (4°C, 1500g, 15 min, Hettig, Germany). The pancreas was dissected, washed and placed in 10 per cent neutral buffered formaline.

Biochemical analysis

The serum SOD activity and MDA level were measured using commercial kits. All assays were conducted according to the manufacturer instructions and protocols. Level of total cholesterol (TC), high-density lipoprotein (HDL) cholesterol and low-density lipoprotein (LDL) cholesterol in serum were measured using the cholesterol oxidase-phenol/aminophenazone (CHO-AP) method, whereas the triglyceride (TG) level in the serum was measured using the glycerol-3-phosphate oxidase-phenol/aminophenazone (GPO-PAP) method (Jalali *et al.*, 2013).

Pancreas immunohistochemical study

Pancreas were fixed in 10 per cent neutral buffered formaline for 24 h and embedded in paraffin. Immunohistochemistry (IHC) staining was done according to Beesley (1995). After the deparaffinization and rehydration stage, the slides were incubated for 20 min with 0.5 per cent

NFS

of H_2O_2 in methanol, then in DIVA solution. The slides were then washed with BPS, incubated with the primary antibody anti-insulin for 60 min, the secondary antibody (Universal Link) for 10 min, then trekkavidin-HRP labeled for 10 min. After that, it was incubated for visualization by using diaminobenzidine (DAB) for 3 min and hematoxylin for 3 min. Pancreatic β -cells, which produced insulin would be shown as brown in color. Quantification of the cells was done (Suarsana *et al.*, 2010) by calculating the average of β -cells, which showed immune-reactivity to anti-insulin from five Langerhans islands at 400 \times of magnification.

55

Statistical analysis

are expressed as mean \pm standard deviation for the four rats in each group ($n = 4$). The statistical significance was evaluated by one-way analysis of variance (ANOVA) followed by Fisher test (Stat View) using Minitab Ver.16.0. Statistical significance was accepted at $p < 0.05$.

Results

The characteristics of the snake fruit Kombucha are shown in Table I. There were no cultivar differences in the total sugar ($p = 0.525$) and total soluble solids ($p = 0.088$), but the other properties i.e. total acidity ($p = 0.043$), pH ($p = 0.016$) and total phenolic content ($p = 0.000$) were cultivar dependent. The Suvaru snake fruit Kombucha had the highest phenolic content (535.6 mg GAE/L). The differences in some of the parameters in Table I and those in Zubaidah *et al.* (2018) show location and batch differences, as those cultivars were obtained and processed at different times. This notwithstanding, the health benefits of the snake fruit Kombucha are undisputed in this study and our previous studies.

Anti-diabetes activity of the snake fruit Kombucha was indicated by the changes in the FPG levels before and after the treatments (Table II) the 28th day, the FPG of the diabetic rats treated with the Kombucha (110.3-189.3 mg/dL) was significantly lower ($p = 0.048$) than the diabetic control group (413.3 mg/dL). It is noteworthy that the FPG levels of the diabetic rats treated with the Madura and Suvaru Kombucha were not significantly different ($p = 0.000$) from the normal control rats. The highest decrease in the FPG levels of the diabetic rats was 75.71 per cent when they were treated with the Madura Kombucha, and this is similar to those of the diabetic rats treated with the Suvaru Kombucha (75.66 per cent).

Table II also shows the SOD activity level of the diabetic control rats (18.7 unit/100 μ L) was lower than the normal control rats (52.7 unit/100 μ L). The STZ-induced diabetic rats treated with the snake fruit Kombucha had their SOD levels (20.9-44.6 unit/100 μ L) significantly higher ($p = 0.000$) than those of the untreated diabetic rats. In line with the SOD results, the MDA level was significantly higher ($p = 0.000$) in the diabetic control rats (0.84 ng/100 μ L) than in the normal control rats (0.28 ng/100 μ L). Moreover, the MDA levels of

Snake fruit cultivar	Total acidity (%)	pH	Total sugar (%)	Total soluble solid (%)	Total phenolic content (mg GAE/L)
Suvaru	1.58 \pm 0.14 ^{ab}	3.22 \pm 0.09 ^{ab}	7.76 \pm 0.03 ^a	12.9 \pm 0.1 ^a	535.6 \pm 2.0 ^a
Madura	1.64 \pm 0.03 ^a	3.20 \pm 0.12 ^{ab}	8.26 \pm 0.17 ^a	12.9 \pm 0.3 ^a	473.8 \pm 8.6 ^b
Pondoh	1.71 \pm 0.14 ^a	3.12 \pm 0.02 ^a	8.28 \pm 0.42 ^a	13.0 \pm 0.1 ^a	377.1 \pm 10.4 ^c
Poli	1.41 \pm 0.14 ^b	3.28 \pm 0.15 ^b	8.25 \pm 0.87 ^a	13.9 \pm 0.1 ^a	397.0 \pm 16.8 ^c
<i>p</i> -value	0.043	0.016	0.525	0.088	0.000

Table I.
Chemical characteristics of the snake fruit Kombucha*

Notes: *Values are means \pm standard deviations ($n = 3$ for each group). Values in a column with the same letters are not significantly ($p > 0.05$) different. The statistical significance was evaluated by one-way ANOVA followed by Fisher test

the diabetic rats treated with the snake fruit Kombucha (0.37-0.48 ng/100 μ L) were significantly lower ($p = 0.000$) than those of the untreated diabetic rats. The *Suwaru* snake fruit Kombucha treatment resulted in the highest SOD level and the lowest MDA level of 44.6 unit/100 μ L and 0.37 ng/100 μ L, respectively.

Lipid profile including levels of LDL cholesterol, TC and TG in the diabetic control rats were significantly higher ($p = 0.000$) than those in the normal control rats. The levels of HDL cholesterol in the diabetic control rats were significantly lower ($p = 0.000$) than those in the normal control rats (Table III). Specifically, the *Suwaru*, *Madura* and *Bali* snake fruit Kombucha in the diabetic rats resulted in significantly lower levels of TG, TC and LDL cholesterol than those in the diabetic control rats, whereas the levels of HDL cholesterol were higher. It can be observed that the diabetic rats treated with the *Suwaru* snake fruit Kombucha had the best lipid profile, in which LDL cholesterol, TG and TC levels were not significantly different ($p = 0.000$) from those in the normal control rats. HDL cholesterol

Anti-diabetes activity of Kombucha

Group	FPG level (mg/dL)		No. of pancreatic β -cells	SOD level (unit/100 μ L)	MDA level (ng/100 μ L)
	0 day	28th day			
Normal	119.5 \pm 8.7 ^b	104.3 \pm 3.4 ^d	114.9 \pm 14.7 ^a	52.7 \pm 1.8 ^a	0.28 \pm 0.04 ^e
DM	463.8 \pm 36.6 ^a	413.3 \pm 8.3 ^a	42.1 \pm 11.5 ^c	18.7 \pm 1.4 ^d	0.84 \pm 0.02 ^a
DM + KS <i>Suwaru</i>	453.0 \pm 13.0 ^a	110.3 \pm 2.9 ^{cd}	72.2 \pm 17.9 ^b	44.6 \pm 1.9 ^b	0.37 \pm 0.03 ^d
DM + KS <i>Madura</i>	472.5 \pm 42.4 ^a	114.8 \pm 9.4 ^{cd}	73.5 \pm 17.5 ^b	41.7 \pm 0.8 ^b	0.48 \pm 0.03 ^b
DM + KS <i>Pondoh</i>	466.0 \pm 26.4 ^a	189.3 \pm 15.4 ^b	63.8 \pm 15.2 ^{bc}	30.8 \pm 3.6 ^c	0.42 \pm 0.04 ^c
DM + KS <i>Bali</i>	445.0 \pm 20.0 ^a	140.0 \pm 14.4 ^c	61.2 \pm 9.5 ^{bc}	20.9 \pm 1.9 ^d	0.47 \pm 0.02 ^b
<i>p</i> -value	0.000	0.000	0.006	0.000	0.000

Notes: *Values are means \pm standard deviations ($n = 4$ for each group). Values of number of pancreatic β -cells, SOD and MDA levels obtained from the 28th day experiment. The animal experiments were designed as follows: normal rats, diabetic rats (DM) and diabetic rats with administration of snake fruit Kombucha (DM + KS) from different cultivar (*Suwaru*, *Madura*, *Pondoh* and *Bali*) at 5 mL/kg per day for 28 days. Values in a column with the same letters are not significantly ($p > 0.05$) different. The statistical significance was evaluated by one-way ANOVA followed by Fisher test

Table II. Effect of the snake fruit Kombucha administration on the FPG level, number of pancreatic β -cells, SOD activity and the MDA serum levels in the rats*

Group	HDL level (mg/dL)	LDL level (mg/dL)	TG level (mg/dL)	TC level (mg/dL)
Normal	59.3 \pm 4.0 ^a	6.8 \pm 1.0 ^d	48.0 \pm 2.6 ^d	44.8 \pm 2.6 ^d
DM	37.8 \pm 5.7 ^c	14.3 \pm 1.3 ^a	102.8 \pm 6.9 ^a	75.3 \pm 5.7 ^a
DM + KS <i>Suwaru</i>	46.8 \pm 1.3 ^b	7.3 \pm 1.0 ^{cd}	52.5 \pm 6.8 ^d	49.0 \pm 2.6 ^{cd}
DM + KS <i>Madura</i>	46.5 \pm 2.1 ^b	10.3 \pm 1.3 ^{bc}	74.5 \pm 2.7 ^c	51.0 \pm 3.5 ^{cd}
DM + KS <i>Pondoh</i>	43.8 \pm 6.1 ^{bc}	12.8 \pm 1.0 ^{ab}	97.8 \pm 8.2 ^{ab}	66.8 \pm 5.7 ^b
DM + KS <i>Bali</i>	44.0 \pm 4.6 ^{bc}	10.3 \pm 1.3 ^{bc}	92.0 \pm 8.1 ^b	53.0 \pm 4.2 ^c
<i>p</i> -value	0.000	0.000	0.000	0.000

Notes: *Values are means \pm standard deviations ($n = 4$ for each group). Values of HDL, LDL, TG and TC levels obtained from the 28th day experiment. The animal experiments were designed as follows: normal rats, diabetic rats (DM), diabetic rats with administration of snake fruit Kombucha (DM + KS) from different cultivar (*Suwaru*, *Madura*, *Pondoh* and *Bali*) at 5 mL/kg per day for 28 days. Values in a column with the same letters are not significantly ($p > 0.05$) different. The statistical significance was evaluated by one-way ANOVA followed by Fisher test

Table III. Effect of the snake fruit Kombucha administration on the lipid profile serum levels in the rats*

NFS

level³⁶ in the diabetic rats treated with the *Suwaru* and *Madura* snake fruit Kombucha were not significantly higher ($p = 0.000$) than the other snake fruit Kombucha treatments.

IHC analysis results are shown in Figure 1 and Table II. The size and shape of the Langerhans islands of the diabetic rats were smaller than those of the normal control rats, and that also had a very low immune reactive response (brown⁴⁸ color) against anti-insulin to indicate a low level of insulin production¹⁵. This is supported by the number of pancreatic β -cells that produced insulin in the diabetic rats, which was significantly lower ($p < 0.05$) than those in the normal control rats. Improvements of the Langerhans island structure and functions of the insulin secretion occurred in the diabetic rats treated with the snake fruit Kombucha compared to the diabetic control rats. Based on the data, the number of pancreatic²⁴ cells that produced insulin in the diabetic rats treated with the snake fruit Kombucha was significantly higher ($p = 0.006$) than those in the diabetic control rats.

Discussion

Induction by using STZ caused destruction of β -cells of islets of Langerhans in the pancreas and led to lack of insulin secretion and increases in plasma glucose (Szkudelski, 2001; Srihari *et al.*, 2013). The findings of the present study showed that the rats treated with the snake fruit Kombucha from the *Suwaru*, *Madura*, *Pondoh* and *Bali* cultivars were significantly lower in SOD levels and higher in MDA levels than the normal control rats, and the reverse was the case when the snake fruit Kombucha were compared with the diabetic control rats (Table II). These beneficial effects of the snake fruit Kombucha on the measures of FPG could be due to the phenolics in the snake fruit Kombucha (Table I), such as flavonoids and tannins as previously reported (Zubaidah *et al.*, 2018). Although more data

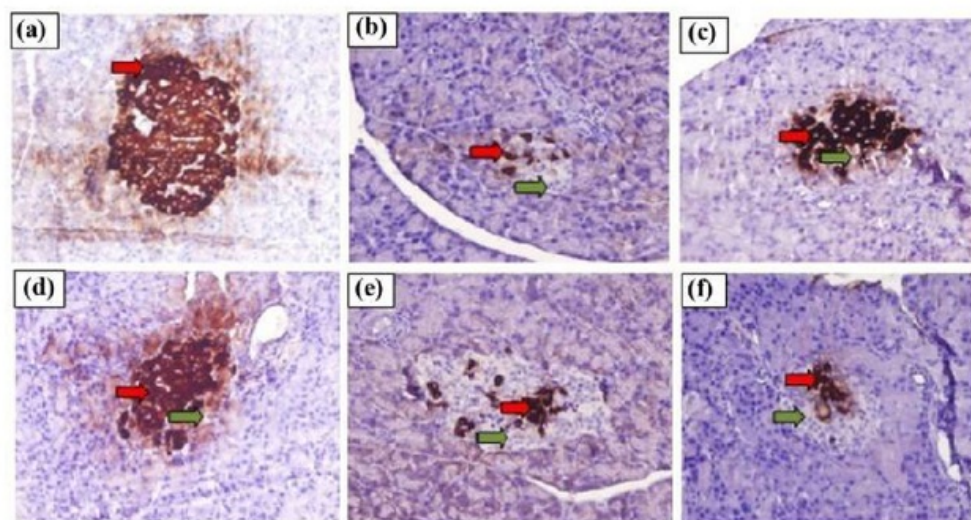


Figure 1.
Effect of the snake fruit Kombucha administration on pancreatic cells in rats evaluated by IHC staining (400 \times magnification).

Notes: (a) Normal rats; (b) diabetic rats; (c) diabetic rats with administration of *Suwaru* snake fruit Kombucha; (d) diabetic rats with administration of *Madura* snake fruit Kombucha; (e) diabetic rats with administration of *Pondoh* snake fruit Kombucha; (f) diabetic rats with administration of *Bali* snake fruit Kombucha. Red arrow: pancreatic β -cells which have immunoreactive to anti-insulin. Green arrow: endocrine cells which do not show immunoreactive to anti-insulin

are required for any statistical relationships, from Tables I and II, a nominal positive SOP-phenolic content and negative MDA-phenolic content trends observed. Flavonoids and tannins act as antioxidants by donating hydrogen atoms from their hydroxyl aromatic groups (-OH) to bind free radicals, that may play a role ⁹ stimulating regeneration and protection of the architecture of pancreatic β -cells (Dipti *et al.*, 2003; Aloulou *et al.*, 2012; Zubaidah *et al.*, 2017). The IHC staining results (Figure 1 and Table II) indicated an improved performance of the pancreatic β -cells of the rats treated with the snake fruit Kombucha to stimulate insulin secretion. Babu *et al.* (2013) reported that pancreatic β -cells repair can increase insulin secretion and, furthermore, reduce blood glucose level. The blood glucose level can also decrease through the expression of glucose transporter 4 (GLUT-4). GLUT-4 is an active transporter of glucose from extra to intracellular in muscle and liver cells. Phenolic compounds can induce phosphorylation of insulin receptors to stimulate the activity of glucose transporters, one of which is GLUT-4 in cell membranes (Cao *et al.*, 2007; Nurrahma *et al.*, 2018). Increased expression of GLUT-4 can accelerate the transport of glucose into the cells to lower blood glucose levels. Similar to Kombucha tea, the ability of the snake fruit Kombucha in reducing the blood glucose level can be attributed to its ability in modulating immune system to decrease pancreatic β -cells damage. The snake fruit Kombucha was high in organic acid (Table I), and several organic acids have been identified in the Kombucha, including acetic acid, lactic acid and butyric acid (Zubaidah *et al.*, 2018). Phenolic compounds and organic acids in the Kombucha can reduce pancreatic α -amylase activity.

Chronic hyperglycemia can cause oxidative stresses, decrease activities of anti-oxidative systems and increase levels of reactive oxygen species (Dahech *et al.*, 2011). Oxidative environments can cause damage to cells through peroxidation of membrane lipids and glycosylation of proteins by free radicals (Rahimi-Madiseh *et al.*, 2017). Zubaidah *et al.* (2017) reported that STZ-induced diabetes can decrease SOD and increase MDA. In this study, STZ-induced diabetes decreased SOD and increased MDA levels in the serum (the normal and diabetic control rats), and upon treatments with the snake fruit Kombucha ¹⁰ increased and MDA decreased (the diabetic control and Kombucha-treated rats) in the serum of the STZ-induced diabetes rats (Table II). The mechanisms behind the SOD increase are still not clear, but several studies reported that it could be due to phenolic compounds increasing antioxidant enzymes. For example, Allium ampeloprasum extract increased catalase (Rahimi-Madiseh *et al.*, 2017); black garlic extract increased SOD and Glutathione Peroxidase (GSH-Px) (Wang and Sun, 2017); apple vinegar increased SOD (Nakamura *et al.*, 2010); and snake fruit vinegar ²¹ increased SOD (Zubaidah *et al.*, 2017). Furthermore, as speculated above, SOD increases might be due to the presence of flavonoids (phenolic compounds). Ohkawa *et al.* (1979) revealed that flavonoids increased the activity of nuclear factor erythroid 2-related factor 2 (Nrf2) that plays a role in synthesizing cellular antioxidants, including SOD.

This study also revealed that the injection of STZ also increased TG, TC and LDL cholesterol levels and decreased HDL cholesterol level in the rats (Table III). Insulin is an inhibitor of lipid mobilization from adipose tissues. Mobilization of fatty acids from triglyceride to the adipose tissues is helped by hormone-sensitive lipase, which can be activated by lack of insulin with a concomitant increase in serum lipid levels ⁴³ radaran *et al.*, 2014). The reduction of insulin in diabetic conditions can also increase the activity of enzyme 3-Hydroxy-3-methylglutaryl coenzyme A (HMG-CoA) reductase that contributes to cholesterol synthesis (Chogtu *et al.*, 20³⁵ Abu-Hiamed, 2018). Treatments with the snake fruit Kombucha decreased LDL cholesterol, TC and TG

NFS

levels of serum in the diabetic rats (Table III). Previous studies reported that treatments with Kombucha tea in diabetic rats reduced lipase activity (Aloulou *et al.*, 2012). Lipase is responsible for the hydrolysis of non-absorbable dietary triglycerides into absorbable monoglycerides and free fatty acids. It can decrease serum TC and TG levels (Carriere *et al.*, 2001). Decreased levels of LDL cholesterol in the diabetic rats treated with the snake fruit Kombucha may be due to the presence of phenolic compounds (phenolic content-LDL cholesterol revealed a nominally negative trend), which can increase the expression of LDL receptors (LDLr) in the tissues. Increasing LDLr can lead to LDL cholesterol absorption in the blood, so that the level of LDL in the blood decreases (Morin *et al.*, 2008). Phenolic compounds can also inhibit the activity of HMG Co-A reductase in cholesterol synthesis, so that blood cholesterol levels do not increase (Ademosun *et al.*, 2015). Moreover, HDL cholesterol nominally shows a negative trend with TG levels as evident in Table III because when TG is transferred to the liver, the released proteins increase the formation of HDL cholesterol (Zubaidah *et al.*, 2014).

Acetic acid in the snake fruit Kombucha might also have a role in decreasing LDL cholesterol, TG and TC levels in the serum of the diabetic rats. That might be due to acetic acid inhibiting liver lipogenesis and activating protein kinase to maintain lipid homeostasis in the body (Yamashita *et al.*, 2007). In addition, acetic acid can inhibit metabolic pathway of cholesterologenesis (acetyl CoA to cholesterol) and lipogenesis (acetyl CoA into fatty acids and subsequently stored as triglycerides) in the liver, oxidation of fatty acids and stimulates fecal excretion of bile acids (Fushimi *et al.*, 2006).

Conclusion

Kombucha made from snake fruit cultivars Suwaru, Madura, Pondoh and Bali was effective as a therapeutic agent for anti-diabetes in streptozotocin-induced diabetic rats. The diabetic rats treated with the Suwaru snake fruit Kombucha showed a significantly decrease in blood glucose level; improved pancreas cells comparable to the normal control rats; improved oxidative stress status with low MDA and high SOD levels and improved lipid profile with low LDL cholesterol, TG and TC and high HDL cholesterol levels. The phenolic and organic acid contents of the Kombucha could explain its anti-diabetes activity, and position of snake fruit Kombucha as a functional beverage in the management of diabetes.

References

- Abu-Hamad, H. (2018), "Hypocholesterolemic effects of watermelon fruit rind on rats", *Nutrition and Food Science*, Vol. 48 No. 5, pp. 836-845, available at: <https://doi.org/10.1108/NFS-02-2018-0038>
- Ademosun, A.O., Oboh, G., Passamonti, S., Tramer, F., Ziberna, L., Boligon, A.A. and Athayde, M.L. (2015), "Phenolics from grapefruit peels inhibit HMG-CoA reductase and angiotensin-I converting enzyme and show antioxidative properties in endothelial EA.Hy 926 cells", *Food Science and Human Wellness*, Vol. 4 No. 3, pp. 80-85.
- Aloulou, A., Hamden, K., Elloumi, D., Ali, M.B., Hargafi, K., Jaouadi, B., Ayadi, F., Elfeki, A. and Ammar, E. (2012), "Hypoglycemic and antilipidemic properties of Kombucha tea in alloxan-induced diabetic rats", *BMC Complementary and Alternative Medicine*, Vol. 12 No. 1.
- Ani, P.N. and Aginam, P.C. (2018), "Effect of citrus marmosine juice on fasting blood glucose, lipid profile, liver enzyme and body weight", *Nutrition and Food Science*, Vol. 48 No. 5, pp. 755-763, available at: <https://doi.org/10.1108/NFS-01-2018-0002>

- Ayed, L., Abid, S.B. and Hamdi, M. (2017), "Development of a beverage from red grape juice fermented with the Kombucha consortium", *Annals of Microbiology*, Vol. 67 No. 1, pp. 111-121.
- Babu, P.V.A., Liu, D. and Gilbert, E.R. (2013), "Recent advances in understanding the anti-diabetic actions of dietary flavonoids", *The Journal of Nutritional Biochemistry*, Vol. 24 No. 11, pp. 1777-1789.
- Ballali, S. and Lanciai, F. (2012), "Functional food and diabetes: a natural way in diabetes prevention?", *International Journal of Food Sciences and Nutrition*, Vol. 63 (sup1), pp. 51-61.
- Baradaran, A., Nasri, H. and Rafieian-Kopaei, M. (2014), "Oxidative stress and hypertension: possibility of hypertension therapy with antioxidants", *Journal of Research in Medical Sciences*, Vol. 19, pp. 358-367.
- Beesley, J.E. (1995), *Immuno-Cytochemistry: A Practical Approach*, Oxford University Press, New York, NY.
- Bhattacharya, S., Gachhui, R. and Sil, P.C. (2011), "Hepatoprotective properties of Kombucha tea against TBHP-induced oxidative stress via suppression of mitochondria dependent apoptosis", *Pathophysiology*, Vol. 18, No. 3, pp. 221-234.
- 10 Cao, H., Hininger-Favier, I., Kelly, M.A., Benaraba, R., Dawson, H.D., Coves, S., Roussel, A.M. and Anderson, R.A. (2007), "Green tea polyphenol extract regulates the expression of genes involved in glucose uptake and insulin signaling in rats fed a high fructose diet", *Journal of Agricultural and Food Chemistry*, Vol. 55, No. 15, pp. 6372-6378.
- Carriere, F., Renou, C., Ransac, S., Lopez, V., De Caro, J., Ferrato, F., De Caro, A., Fleury, A., Sanwald-Ducray, P., Lengsfeld, H., Beglinger, C., Hadvary, P., Verger, R. and Laugier, R. (2001), "Inhibition of gastrointestinal lipolysis by orlistat during digestion of test meals in healthy volunteers", *American Journal of Physiology-Gastrointestinal and Liver Physiology*, Vol. 281 No. 1, pp. G16-G28.
- 42 Chogtu, B., Magazine, R. and Bairy, K.L. (2015), "Statin use and risk of diabetes mellitus", *World Journal of Diabetes*, Vol. 6 No. 2, pp. 352-357.
- Dahech, I., Belghith, K.S., Hamden, K., Feki, A., Belghith, H. and Mejdoub, H. (2011), "Oral administration of levan polysaccharide reduces the alloxan-induced oxidative stress in rats", *International Journal of Biological Macromolecules*, Vol. 49 No. 5, pp. 942-947.
- Dipti, P., Yogesh, B., Kain, A.K., Pauline, T., Anju, B., Sairam, M., Singh, B., Mongia, S.S., Kumar, G.I. Selvamurthy, W. (2003), "Lead induced oxidative stress: beneficial effects of Kombucha tea", *Biomedical and Environmental Sciences*, Vol. 16, No. 3, pp. 276-282.
- 8 Fushimi, T., Suruga, K., Oshima, Y., Momoko, M., Tsukamoto, Y. and Goda, T. (2006), "Dietary acetic acid reduces serum cholesterol and triacylglycerols in rats fed a cholesterol-rich diet", *British Journal of Nutrition*, Vol. 95, No. 5, pp. 916-924.
- 17 Gamboa-Gómez, C.I., González-Laredo, R.F., Gallegos-Infante, J.A., Pérez, M.M.L., Moreno-Jiménez, M.R., Flores-Rueda, A.G. and Rocha-Guzmán, N.E. (2016), "Antioxidant and angiotensin-converting enzyme inhibitory activity of eucalyptus camaldulensis and litsea glaucescens infusions fermented with Kombucha consortium", *Food Technology and Biotechnology*, Vol. 54, No. 3, pp. 367-374.
- 46 Govindji, A. (1990), "Diabetes and its dietary management", *Nutrition and Food Science*, Vol. 90, No. 5, pp. 9-12.
- 31 Jalali, M.T., Honomaror, A.M., Rekabi, A. and Latifi, M. (2013), "Reference ranges for serum total cholesterol, HDL-cholesterol, LDL-cholesterol, and VLDL-cholesterol and triglycerides in healthy Iranian ahvaz population", *Indian Journal of Clinical Biochemistry*, Vol. 28 No. 3, pp. 277-282.
- Jayabalan, R., Malbaša, R.V., Lončar, E.S., Vitas, J.S. and Sathishkumar, M. (2014), "A review on Kombucha tea-microbiology, composition, fermentation, beneficial effects, toxicity, and tea fungus", *Comprehensive Reviews in Food Science and Food Safety*, Vol. 13, No. 4, pp. 538-550.
- 20anova, A.V., Strelnikov, L.S., Dolya, V.G. and Strilets, O.P. (2016), "Studying the properties of the microbial consortium 'Kombucha' and creation new products on their basis", in *Tropical Issues of New Drugs Development*, Ministry of Public health of Ukraine, National University of Pharmacy, Kharkiv, Ukraine, Vol. 1, pp. 362-363.

- Marin-Peñalver, J.J., Martín-Timón, I., Sevillano-Collantes, 42 and Del Cañizo-Gómez, F.J. (2016), "Update on the treatment of type 2 diabetes mellitus", *World Journal of Diabetes*, Vol. 7, No. 17, pp. 354-395.
- 30 Metcalfe, A., Williams, J., McChesney, J., Patten, S.B. and Jette, N. (2010), "Use of complementary and alternative medicine by those with a chronic disease and the general population—results of a national population based survey", *BMC Complementary and Alternative Medicine*, Vol. 10, No. 1.
- 16 Morin, B., Nichols, L.A., Zalasky, K.M., Davis, J.W., Manthey, J.A. and Holland, L.J. (2008), "The citrus flavonoids hesperetin and nobiletin differentially regulate low density lipoprotein receptor gene transcription in HepG2 liver cells", *The Journal of Nutrition*, Vol. 138, No. 7, pp. 1274-1281.
- Nakamura, K., Ogasawara, Y., Endou, K., Fujimori, S., Koyama, M. and Akano, H. (2010), "Phenolic 22 pounds responsible for the superoxide dismutase-like activity in high-brix apple vinegar", *Journal of Agricultural and Food Chemistry*, Vol. 58, No. 18, pp. 10124-10132.
- Nurrahma, B.A., Suryajayanti, M.F., Dewi, A.L., Khairia, Z., Kusuma, R.J. and Suyoto, P.S.T. (2018), "Fermented rice bran extract improves dyslipidemia in rodents", *Nutrition and Food Science*, Vol. 48, No. 2, pp. 375-383.
- 27 Ogurtsova, K., Fernandes, J.D.R., Huang, Y., Linnenkamp, U., Guariguata, L., Cho, N.H., Cavan, D., Shaw, J.E. and Makaroff, L.E. (2017), "IDF diabetes atlas: global estimates for the prevalence of diabetes for 2015 and 2040", *Diabetes Research and Clinical Practice*, Vol. 128, pp. 40-50.
- 29 Ohkawa, H., Ohishi, N. and Yagi, K. (1979), "Assay for lipid peroxides in animal tissues by thiobarbituric acid reaction", *Analytical Biochemistry*, Vol. 95, No. 2, pp. 351-358.
- 7 Pereira, J.A.R., Barcelos, M.F.P., Ferreira, E.B., Pereira, R.C. and de Angelis-Pereira, M.C. (2016), "Changes in glucose levels and fecal excretion of lipids due to consumption of yacon flour", *Nutrition and Food Science*, Vol. 46, No. 6, pp. 791-802.
- 34 Rahimi-Madiseh, M., Heidarian, E., Kheiri, S. and Rafieian-Kopaei, M. (2017), "Effect of hydroalcoholic allium ampeloprasum extract on oxidative stress, diabetes mellitus and dyslipidemia in alloxan-induced diabetic rats", *Biomedicine and Pharmacotherapy*, Vol. 86, pp. 363-367.
- Srihari, T., Karthikesan, K. and Aslam, N. (2013), "Antihyperglycaemic efficacy of Kombucha in streptozotocin-induced rats", *Journal of Functional Foods*, Vol. 5, No. 4, pp. 1794-1802.
- Suarsana, I.N., Priosoeryanto, B.P. and Bintang, M. (2010), "Profile of blood glucose and ultrastructure of betacells pancreatic islet in alloxan compound induced rats", *Indonesian Journal of Animal and Veterinary Sciences*, Vol. 15, No. 2, pp. 118-123.
- 45 Szkudelski, T. (2001), "The mechanism of alloxan and streptozotocin action in B cells of the rats pancreas", *Physiological Research*, Vol. 50 No. 6, pp. 537-546.
- 28 Tiwari, A.K. and Rao, J.M. (2002), "Diabetes mellitus and multiple therapeutic approaches of phytochemicals: present status and future prospects", *Current Science*, Vol. 83, No. 1, pp. 30-38.
- 6 Vijayaraghavan, R., Singh, M., Rao, P.V.L., Bhattacharya, R., Kumar, P., Sugendran, K., Kumar, O., Pant, S.C. and Singh, R. (2000), "Subacute (90 days) oral toxicity studies of Kombucha tea", *Biomedical and Environmental Sciences: BES*, Vol. 13, No. 4, pp. 293-299.
- Wang, W. and Sun, Y. (2017), "In vitro and in vivo antioxidant activities of polyphenol extracted from black garlic", *Food Science and Technology*, Vol. 37, No. 4, pp. 681-685.
- Yamashita, H., Fujisawa, K., Ito, E., Ide, S., Kawaguchi, N., Kimoto, M., Hiemori, M. and Tsuji, H. (2007), "Improvement of obesity and glucose tolerance by acetate in type 2 diabetic otsuka long-evans Tokushima fatty (OLETF) rats", *Bioscience, Biotechnology, and Biochemistry*, Vol. 71, No. 5, pp. 1236-1243.
- Zubaidah, E., Ichromasari, D.Y. and Mandasari, O.K. (2014), "Effect of salacca vinegar var. suwaru on lipid profile diabetic rats", *Food and Nutrition Sciences*, Vol. 5, No. 9, pp. 743-748.

Zubaidah, E., Dewantari, F.J., Novitasari, F.R., Srinta, I. and Blanc, P.J. (2018), "Potential of snake fruit (*salacca zalacca* (gaerth.) voss) for the development of a beverage through fermentation with the Kombucha consortium", *Biocatalysis and Agricultural Biotechnology*, Vol. 13, pp. 198-203.

Zubaidah, E., Putri, W.D.R., Puspitasari, T., Kalsum, U. and Dianawati, D. (2017), "The effectiveness of various salacca vinegars as therapeutic agent for management of hyperglycemia and dyslipidemia on diabetic rats", *International Journal of Food Science*, Vol. 2017.

Anti-diabetes
activity of
Kombucha

Further reading

Schofield, J.D., Liu, Y. and Rayaz, P.R. (2016), "Diabetes dyslipidemia", *Diabetes Therapy: Research, Treatment and Education of Diabetes and Related Disorders*, Vol. 7, No. 2, pp. 203-219.

Corresponding author

Elok Zubaidah can be contacted at: elzoeba@yahoo.com

For instructions on how to order reprints of this article, please visit our website:

www.emeraldgroupublishing.com/licensing/reprints.htm

Or contact us for further details: permissions@emeraldinsight.com

Anti-diabetes activity of Kombucha prepared from different snake fruit cultivars

ORIGINALITY REPORT

% 18	% 12	% 11	% 12
SIMILARITY INDEX	INTERNET SOURCES	PUBLICATIONS	STUDENT PAPERS

PRIMARY SOURCES

1	www.myfoodresearch.com Internet Source	% 2
2	Submitted to Higher Education Commission Pakistan Student Paper	% 1
3	Khaled Hamden, Bassem Jaouadi, Nedra Zaraï, Tarek Rebai, Serge Carreau, Abdelfattah Elfeki. "Inhibitory effects of estrogens on digestive enzymes, insulin deficiency, and pancreas toxicity in diabetic rats", Journal of Physiology and Biochemistry, 2010 Publication	% 1
4	Submitted to Sungkyunkwan University Student Paper	% 1
5	Submitted to Victoria University Student Paper	<% 1
6	Submitted to University Of Tasmania Student Paper	<% 1
7	repositorio.ufes.br	

8

uir.unisa.ac.za

Internet Source

<% 1

9

fjfsdata01prod.blob.core.windows.net

Internet Source

<% 1

10

ubithesis.ubi.pt

Internet Source

<% 1

11

Submitted to Nelson Mandela Metropolitan University

Student Paper

<% 1

12

Bhavsar, Shefalee K., Paulomi Joshi, Mamta B. Shah, and D.D. Santani. "Investigation into Hepatoprotective Activity of Citrus limon.", Pharmaceutical Biology, 2007.

Publication

<% 1

13

Peace Nwanneka Ani, Precious Chisom Aginam. " Effect of juice on fasting blood glucose, lipid profile, liver enzyme and body weight ", Nutrition & Food Science, 2018

Publication

<% 1

14

Submitted to University of Edinburgh

Student Paper

<% 1

15

Dahech, I.. "Oral administration of levan polysaccharide reduces the alloxan-induced oxidative stress in rats", International Journal of Biological Macromolecules, 20111201

Publication

<% 1

16	Submitted to University of Glamorgan Student Paper	<% 1
17	R. Jayabalan, Viduranga Y. Waisundara. "Kombucha as a Functional Beverage", Elsevier BV, 2019 Publication	<% 1
18	www.econstor.eu Internet Source	<% 1
19	thesnakefruit.com Internet Source	<% 1
20	Submitted to Roehampton University Student Paper	<% 1
21	uece.br Internet Source	<% 1
22	eprints.usq.edu.au Internet Source	<% 1
23	Submitted to University of South Australia Student Paper	<% 1
24	"Abstracts of Papers Submitted to the American Gastroenterological Association", Gastroenterology, 1989 Publication	<% 1
25	Laura Lavefve, Daya Marasini, Franck Carbonero. "Microbial Ecology of Fermented Vegetables and Non-Alcoholic Drinks and Current Knowledge on Their Impact on	<% 1

26

www.nature.com

Internet Source

<% 1

27

ijbms.mums.ac.ir

Internet Source

<% 1

28

Submitted to University of New England

Student Paper

<% 1

29

lume.ufrgs.br

Internet Source

<% 1

30

eprints.ncrm.ac.uk

Internet Source

<% 1

31

Submitted to Griffth University

Student Paper

<% 1

32

hal.archives-ouvertes.fr

Internet Source

<% 1

33

Submitted to Mansoura University

Student Paper

<% 1

34

eprints.skums.ac.ir

Internet Source

<% 1

35

Bhattacharya, Semantee, Ratan Gachhui, and Parames C. Sil. "Effect of Kombucha, a fermented black tea in attenuating oxidative stress mediated tissue damage in alloxan induced diabetic rats", Food and Chemical Toxicology, 2013.

Publication

<% 1

36

Submitted to Universiti Sains Malaysia

Student Paper

<% 1

37

Ehsan Jenab. "Canola oil extracted by supercritical carbon dioxide and a commercial organic solvent", European Journal of Lipid Science and Technology, 06/2006

Publication

<% 1

38

Jayabalan, R.. "Changes in content of organic acids and tea polyphenols during kombucha tea fermentation", Food Chemistry, 2007

Publication

<% 1

39

link.springer.com

Internet Source

<% 1

40

Submitted to American University of Madaba

Student Paper

<% 1

41

unsri.portalgaruda.org

Internet Source

<% 1

42

hal.upmc.fr

Internet Source

<% 1

43

journals.lww.com

Internet Source

<% 1

44

e-sciencecentral.org

Internet Source

<% 1

45

iosrphr.org

Internet Source

<% 1

Submitted to Colorado Technical University

46	Online Student Paper	<% 1
47	Submitted to University of Northumbria at Newcastle Student Paper	<% 1
48	Submitted to CVC Nigeria Consortium Student Paper	<% 1
49	www.scilit.net Internet Source	<% 1
50	Submitted to South Bank University Student Paper	<% 1
51	www.scitechnol.com Internet Source	<% 1
52	K. C. Chao, K. F. Chao, C. C. Chuang, S. H. Liu. "Blockade of interleukin 6 accelerates acinar cell apoptosis and attenuates experimental acute pancreatitis in vivo", British Journal of Surgery, 2006 Publication	<% 1
53	Chakraborty, Kajal, Deepu Joseph, and Vamshi Krishna Raola. "Anti-Inflammatory Concentrate Enriched with Substituted Oligofucans Derived from Brown Seaweed Turbinaria conoides (J. Agardh) Kützinger and its Safety Assessment on Wistar Rats", Journal of Aquatic Food Product Technology, 2016. Publication	<% 1

54	Submitted to Management & Science University Student Paper	<% 1
55	www.talkingaboutthescience.com Internet Source	<% 1
56	Jurate Butnoriene, Adomas Bunevicius, Antanas Norkus, Robertas Bunevicius. "Depression but not anxiety is associated with metabolic syndrome in primary care based community sample", Psychoneuroendocrinology, 2014 Publication	<% 1
57	www.ajol.info Internet Source	<% 1
58	sphinxsai.com Internet Source	<% 1
59	qspace.qu.edu.qa Internet Source	<% 1

EXCLUDE QUOTES ON
EXCLUDE ON
BIBLIOGRAPHY

EXCLUDE MATCHES < 10
WORDS